



## In this e-Gazette....

- [THE MOST CONCERTED ATTACK in 28 YEARS](#)
- [SIX PROJECTS TO TAKE PARK LANDS AWAY](#)
- [CLEARING THE WAY](#)
- [DON'T DELAY - SEND THIS EMAIL IMMEDIATELY](#)
- [THREE DEADLINES - July 15, 17 and 31](#)
- [PARK LANDS ART PRIZE 2016](#)
- [PHOTOS OF THE DAY](#)



### **THE MOST CONCERTED ATTACK in 28 YEARS**



#### **PRESIDENT'S MESSAGE**

These are very dark days for the Park Lands. They are under attack from multiple directions. In my 28-year association with APPA I have never seen so many threats to the Park Lands under way at the same time. See the list of threats listed below. Now, more than ever, APPA needs your support.

If you have joined APPA (or renewed your membership) for 2015-16, thank you. If you have not, (or just wish to donate) then please do so now by visiting our membership page <http://www.adelaide-parklands.org/membership.html>

Your support could make the difference in APPA's fight to protect the Park Lands from multiple threats.

Share ▼

I am proud of the APPA Committee we have and the energetic inspired effort they are putting in! We are making a push to enrol younger members and encourage them to celebrate their Park Lands. We will be showing the delightful but pointed cartoon to schools adjacent to the Park Lands inviting them with support from Staff to become involved themselves, producing their own videos etc.

Biennially we present one of the most prestigious Art Prizes in SA widely acclaimed by the Art World with hundreds of entries reflecting on the wonders of the Park Lands. But we need more strength to our APPA Arm!

And that is where you can come in! Can we count on your support in 2015-16 ?

Ian Giffillan, President

### SIX PROJECTS TO TAKE PARK LANDS AWAY



This is what you will see in the Adelaide Park Lands continuously for the next few years, if the Government gets its way.

A Park Lands Zone "Development Plan Amendment" (see below) is the first attack. If that succeeds there will be six projects ready to follow it in rapid succession. In previous e-Gazettes, APPA has highlighted some of these as individual projects.

However, when viewed together, it is apparent that the current State Government has no appreciation at all for our national-heritage listed, world-unique Park Lands. In each of these six cases the strategy is to sacrifice Park Lands in the name of sectoral interests, expediency, or commercialism.

In brief, the six projects are:

1. **The O-Bahn busway through Rundle Park and Rymill Park;**

Share ▼

3. **The push for a new grandstand for horse racing in Victoria Park;**
4. **The plan to sell off the old RAH to private developers;**
5. **A promised new High School in Frome Park; and**
6. **A proposed \$400m railway flyover in Bonython Park**

The first step in protecting the Park Lands, therefore, must be to combat the legal mechanism by which the Government proposes to commission these Park Lands attacks.

## CLEARING THE WAY



**Development Plan Amendment**

**By the Minister**

One of the main reasons for establishing the *Adelaide Park Lands Act 2005* and the national heritage listing of the Park Lands in 2008 was to stop future State Governments from using normal development assessment processes to locate any future pet projects within the Park Lands.

Now, however, that is just what the Government wants to do. The Planning Minister wants to amend the rules applying to the Park Lands Zone. In the Minister's own words:

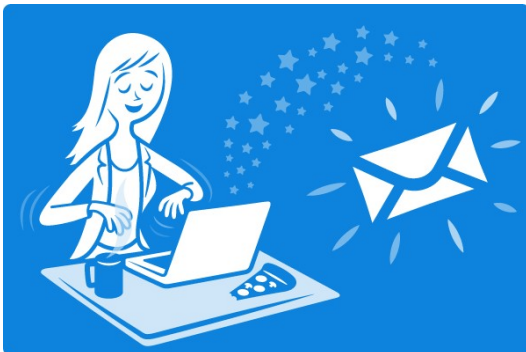
- *The proposed DPA will see the removal of 'public infrastructure projects' from being considered as 'non-complying' forms of development in selected Policy Areas of the Park Lands Zone, reducing some of the uncertainty associated with the assessment process of such critical projects.*
- *The proposal for the O-Bahn City Access Project would be included as a form of development that would be envisaged in these Policy Areas.*

Share ▼



Rymill Park is still very much at risk

**DON'T DELAY - SEND THIS EMAIL IMMEDIATELY**



Write your own, or just copy and paste the suggestion below, if you like.

**But your words must be received by 5pm on Wednesday 15th July.**

**In the history of the Adelaide Park Lands, this could be the most significant thing you can do.**

Don't let down our future generations!

To: [dpac@sa.gov.au](mailto:dpac@sa.gov.au)  
Subject: Park Lands Zone DPA

Dear Sir/Madam

*South Australians shouldn't have to choose between good public transport and high quality Park Lands – they deserve both.*

*The Minister's Park Lands Zone DPA undermines both the spirit and the intent of the Adelaide Park Lands Act 2005.*

*Ten years ago, Parliament agreed that the Park Lands deserved special protection and that any development projects needed to go through the most rigorous process of public participation. Those principles will be out of the window if this DPA is approved.*

*Clearly the Government doesn't trust the community to have a sensible debate about improving public infrastructure in the Park Lands. Instead, they want to bulldoze through their plans by removing opportunities for citizens to be involved.*

*The right to go to the umpire (ERD Court) over contentious Park Lands development will be trashed if this DPA is approved. Under these changes, there will be no public consultation and no right to challenge infrastructure projects in the Park Lands.*

*The Minister for Planning has proposed a Development Plan Amendment (DPA) that will facilitate infrastructure such as the O-Bahn City Access Project being constructed in sections of Adelaide Park Lands. The DPA would*

Share ▼

*non-complying as it is now.*

*Approval 'on merit' means that detailed development decisions can be enforced by the Department without formal public input or publication of review documents such as an Environmental Impact Statement that highlight the impact of the project.*

*This means that the public will be denied any input to the kind of projects that are currently assessed as non-complying development.*

*This is inconsistent with the principles in section 4 of the Adelaide Parklands Act 2005 that **"the interests of the South Australian community in ensuring the preservation of the Adelaide Park Lands are to be recognised, and activities that may affect the Park Lands should be consistent with maintaining or enhancing the environmental, cultural, recreational and social heritage status of the Park Lands for the benefit of the State."***

*For these reasons, I wish to indicate that the DPAC should advise the Minister of Planning, Transport and Infrastructure to reject the proposed amendments.*

*Yours Faithfully,*

### THREE DEADLINES - July 15, 17 and 31



**July 15**, 5pm - the deadline for submissions on the Minister's DPA (see above)

**July 17** - the deadline for submissions to the Adelaide City Council's 'Shape the Park Lands' <http://shape.adelaideparklands.com.au> Hundreds of suggestions have already been made. You don't have to come up with new ones - just "like" some and dislike others. The ideas range from, the wonderful:

- [Idea #444 - Return the old RAH to Park Lands](#)
- [Idea #753 - Profit from World Heritage Listing](#)
- [Idea #761 - Stop the loss of Park Lands](#)

...to the outrageous:

- [Idea #604 - Parkland Car Parks](#)
- [Idea #657 - A new residential district in Victoria Park](#)

If you love the Park Lands, don't miss this opportunity to let the Park Lands managers know what you think of some of the ideas out there.

**July 31** - the deadline for submissions to a [Select Committee of State Parliament inquiring into the O-Bahn Access Project](#). Written submissions and expressions of interest should be addressed to the Secretary to the Select Committee on O-Bahn Access Project, Parliament House, GPO Box 572, Adelaide 5001, by telephone on (08) 8237 9498, or e-mail at [guy.dickson@parliament.sa.gov.au](mailto:guy.dickson@parliament.sa.gov.au)

Share ▼

## PARK LANDS ART PRIZE 2016



Entries are now open for the 2016, second Biennial Adelaide Park Lands Art Prize.

The competition carries a first prize of \$20,000, and ten separate \$1,000 "commended" prizes, as well as a "People's Prize" of \$1,000.

Until the first Adelaide Park Lands Art Prize in 2014 there had never been a major art prize with Adelaide as its focus, nor a prize with the Park Lands as its theme. The prize is open to all artists, of all ages, from all countries, working in 2-dimensional and 3-dimensional art forms including photography.

All finalists will be shown and winners announced on Friday 15th April 2016, at the Adelaide Festival Centre Artspace Gallery, followed by six weeks of public exposure in this major city gallery from the 16th April to 29th May 2016. It is a "Non-Acquisitive" Prize. All artworks displayed will be for sale. At the 2014 Art Prize \$24,000 of artwork was sold.

For more details, including a full list of sponsors, conditions of entry and key dates, visit:

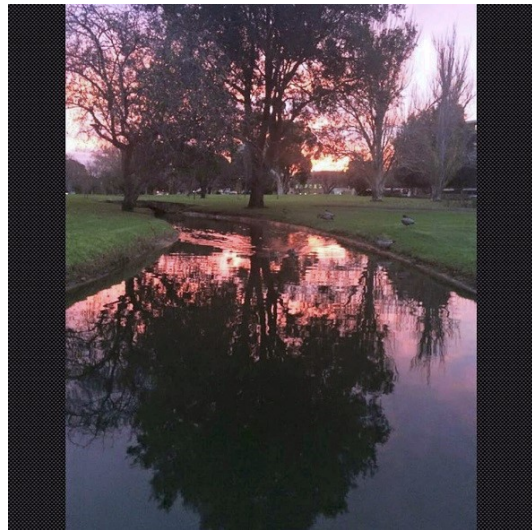
<http://www.parklandsart.com>

The painting above, by Doreen Constable, was one of the finalists in the 2014 event.

Share ▼

**PHOTOS OF THE DAY**

Recent highlights



Share ▼



From the top:

- a) Wita Wirra (Park 18) off South Tce near Glen Osmond Rd
- b) Victoria Park /Pakapakanthi (Park 16)
- c) Veale Gardens, Walyu Yarta (Park 21) (Lyn Long, contributor)
- d) Kurangga (Park 20) off South Tce - Glover playground
- e) Botanic Gardens, Tainmuntilla (Park 11) "Amalthée and Jupiter's goat" sculptor Pierre Julien, bronze copy of a 1787 original in the Louvre



APPA on Facebook @adelparklands APPA website



Share



Tweet



Forward

Copyright © Adelaide Park Lands Preservation Association, Inc. [2015] All rights reserved.

[unsubscribe from this list](#) [update subscription preferences](#)

MailChimp