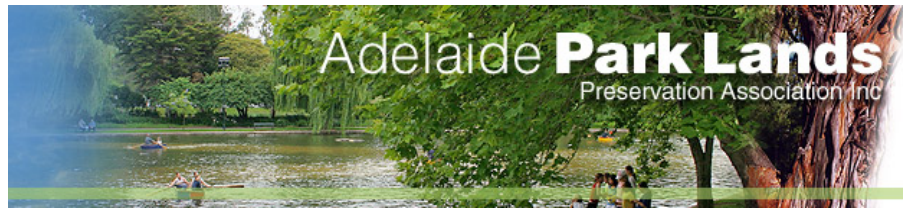


e-Gazette No. 026 - May, 2017. If this email doesn't look right, then: [View this email in your browser](#)



## In this e-Gazette....

- [PUBLIC BE DAMNED - WE'LL STILL SELL OLD RAH TO DEVELOPERS](#)
- [JUST A JOKE? OR GAGGING ON 'ALTERNATIVE FACTS'?](#)
- [ADELAIDE, YOU NEED VIBRANCY! AND WE CAN SELL IT TO YOU...](#)
- [CONFLICT? NOTHING TO SEE HERE, MOVE ALONG PLEASE....](#)
- [PARK AMBASSADORS PROGRAM LAUNCHED](#)
- [Reports from Park Ambassadors](#)
- [WHICH PARK IS WHICH? AN EASY, BY THE NUMBERS GUIDE](#)
- [WHAT'S ON IN THE PARK LANDS OVER THE NEXT FEW WEEKS](#)
- [UNCERTAIN FUTURE FOR 'UGLY HULK' IN THE TORRENS](#)
- [EIGHT YEARS AHEAD OF BRITAIN](#)
- [CALLING OUT SPORTS PRIVATISATION](#)
- [KEEPING TRACK OF GROUND WORKS](#)
- [EVENT: GREATER AND GREENER 2017.](#)
- [PHOTOS OF THE DAY - RECENT HIGHLIGHTS](#)



### PUBLIC BE DAMNED - WE'LL STILL SELL OLD RAH TO DEVELOPERS



Despite overwhelming public demand to keep the site public, the State Government has signalled it still intends to sell a large slab of the old RAH site Park Lands to private developers for profit.

The public response was: "the need to retain as much open, green space as possible and ensure it was available to all members of the public".

Minister Stephen Mullighan's response was: "Without a full mix of uses the site won't support so many people on site and deliver benefits to the East End"



Share

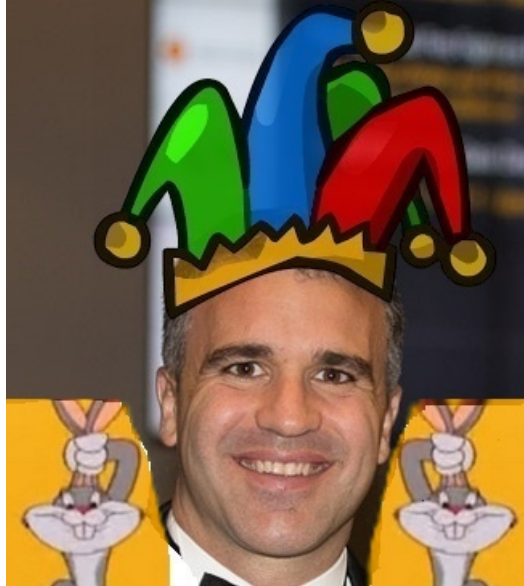


Tweet



Forward

## JUST A JOKE? OR GAGGING ON 'ALTERNATIVE FACTS'?



State Government Minister Peter Malinauskas is a comedian! Who would have guessed? Answering a question in Parliament from Greens leader Mark Parnell, he said: *"I am really genuinely proud to be part of a state government that is committed to ensuring that the Park Lands are accessible to all people, rather than an exclusive few."*

Hilarious! Of course you might not have got the joke if you weren't aware that this State Government is giving away part of Elder Park to the Walker Corporation, and to Sky City Casino (on 99-year leases) and letting an "exclusive few" 1,080 apartment owners have exclusive access to part of Park 11 on the old RAH site. (See this month's lead story, above.)

Hilarious joke, Minister! Of course, he wasn't joking. He was just insinuating the exact opposite of the truth - that Park Lands campaigners like APPA want exclusive access. This is apparently what is now referred to, in the Trump era, as "alternative facts". The *real* facts are the opposite of what the Minister suggests. APPA is the organisation fighting for public, not private interests. It is the State Government that's busy transferring parts of the Park Lands to the "exclusive few."

The Advertiser's columnist [Rex Jory](#) recently described it as *"mice nibbling away at cheese"* as Park Lands disappear, piece by piece.

You can read Mr Parnell's question and the Minister's hilarious reply, here: <http://www.markparnell.org.au/speech.php?speech=1454>



Won't the Botanic Gardens look great when the "exclusive few" 1,080 apartment owners look out from their "exclusive few" skyscraper windows - the top ones three times higher



Share

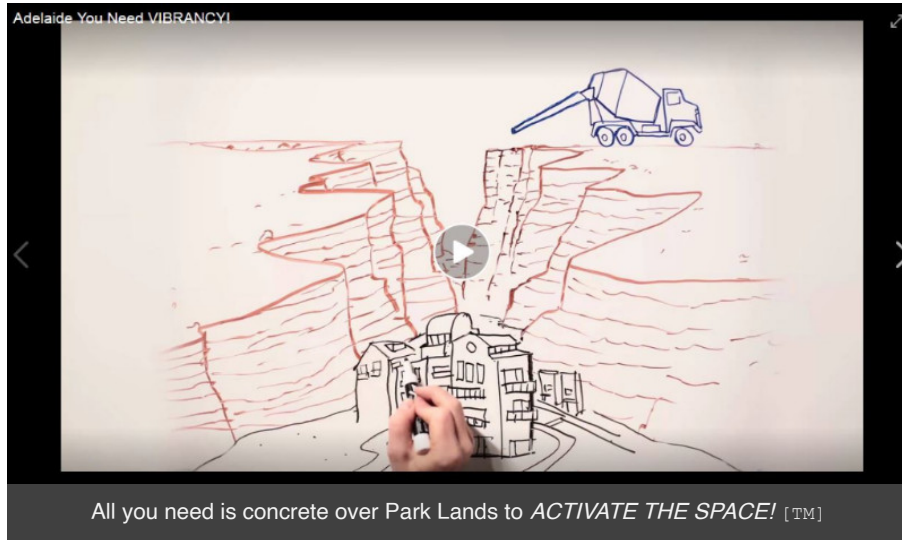


Tweet



Forward

## ADELAIDE, YOU NEED VIBRANCY! AND WE CAN SELL IT TO YOU...



All you need is concrete over Park Lands to *ACTIVATE THE SPACE!* [TM]

### Credits

- Animator: Greg Holfeld
- Camera: Llam Somerville
- Voiceovers: Shane Sody, Tess O'Flaherty
- Producer: Shane McNeil

Thanks also to the Commonwealth Government - Community Heritage Grants Program, for funding the production of this video.

This video is the latest of seven videos on [APPA's YouTube Channel](#).



Share



Tweet



Forward

## CONFLICT? NOTHING TO SEE HERE, MOVE ALONG PLEASE....



In [last month's e-Gazette](#) we broke the story that the proposed State Heritage Assessment of the Park Lands would be conducted by a firm of architects that is being paid to promote further alienation of the Park Lands.

Dash Architects [by its own admission](#), is working to alienate parts of the Park Lands on behalf of several clients. So we called on Minister Ian Hunter and/or his Department to do the right thing, and re-start the process with a different consultant, someone who wasn't being paid to jeopardise Park Lands for private interests.

Incredibly, however [the Departmental line is that Dash Architects has no conflict of interest unless Dash Architects says that it does](#).

Subscribe

Past Issues

Translate

RSS

That sounds like bureaucratic gobbledeegook to us. Very clearly, the State Heritage Unit does not have the concept of perceived, potential or real conflict of interest. In undertaking the assessment and recommendations for heritage listings, the consultant can not be involved in projects on Park Lands that may be affected by those recommendations.

It's not sufficient to claim that the potential conflict of interest might be addressed AFTER completion of the consultancy. That is putting the cart before the horse.

Take Action here: <http://www.adelaide-parklands.asn.au/take-action>

Share Tweet Forward

### PARK AMBASSADORS PROGRAM LAUNCHED

The first stage of APPA's Park Ambassadors program was officially launched at our Annual General Meeting on 30 April.

So what is a Park Ambassador? Simply a volunteer who will take a photo once a month, let you know what's happening in each Park, and then once a year, lead a public guided walk through that part of the Adelaide Park Lands. It's just a few people helping to share the love of the Adelaide Park Lands - each of us sharing our favourite part with you.



APPA's inaugural Park Ambassadors. From left: Rose Wight (Park 16, Victoria Park/Pakapakanthi); Marisha Matthews (Park 18, Wita Wirra); Shane Sody (Park 6, Nantu Wama); Trish Russell (Park 5, Ngampa Yarta); and Hero Weston (Park 13, Rundle Park/Kadlitpina). Missing from photo: Peter Sansom (Park 21, Walyu Yarta); Hamish Ramsay (Park 20, Kurangga) and Damien Mugavin (Park 12, Karrawirra)

The first Park Ambassador guided walk has been scheduled for Saturday 3 June in Nantu Wama (Park 6). See "What's On In the Park Lands" below.

#### Reports from Park Ambassadors



#### Walyu Yarta (Park 21) Peter Sansom

The small pond in Veale Gardens that was the subject of police investigation after a tragic death last month has now been refilled

#### Victoria Park / Pakapakanthi (Park 16) Rose Wight

A relief to see the motor racing infrastructure finally gone from the Park after 5 months

Subscribe

Past Issues

Translate ▾

RSS 



**Ngampa Yarta (Park 5) Trish Russell**

The City Council has been doing some gardening! Huge piles of mulch have been spread over the ground under the palm tree plantation, along the edge of Robe Terrace

**WHICH PARK IS WHICH? AN EASY, BY THE NUMBERS GUIDE**



Do you know which Park is which? We've got a handy by-the-numbers guide that allows you to dip into different parts of the Adelaide Park Lands, to explore: <http://www.adelaide-parklands.asn.au/explore-parks/>

**WHAT'S ON IN THE PARK LANDS OVER THE NEXT FEW WEEKS**

There are always events scheduled in the Park Lands, many of them free, and there are always opportunities to explore the Park Lands on your own, or with friends or family. Take a look at [our picture gallery](#) for hints about interesting spots to visit.

The City Council continually updates its list of 'what's on'. <http://www.adelaidecitycouncil.com/whats-on/category/park-lands>

Some things you might like to try over coming days or weeks include:

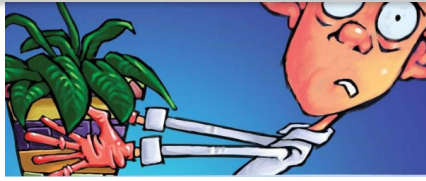
**McNirt hates dirt! - Sat & Sun 20 & 21 May. 5 daytime performances (45 mins) Full of wonder and worms, music and mud: an eccentric experience with an organic twist! Staged in an**

Subscribe

Past Issues

Translate ▾

RSS



earth inspired tent at the Adelaide Botanic Gardens, *McNirt Hates Dirt* provides an unique theatrical experience in the round. Actively involving the audience and engaging young children on multiple levels: no iPads or smart phones just hands-on digging in the dirt.



**Guided walk through Nantu Wama (Park 6) - Sat 3rd June, 2pm, (60-90 mins)**

Join APPA President Shane Sody for a guided walk, learning about one of the best-loved parts of the Park Lands where horses run free (and with the best views to the Adelaide Hills!) but with a surprising dark past. No booking necessary. Gold coin donation. (Free for APPA members). Meet 2pm at corner of Kingston Tce & Jerningham St, North Adelaide.



**BC Fit - Fun, intense training sessions**

A Fun and Intense Training session which includes Boxing, Muscle Toning, Cardio, Core Strength and Stretching. An all-round body workout for yourself, family and friends. Mon, Wed and Thurs 5pm, Victoria Square. \$12.50 per session. [Book on-line.](#)



**History Festival - Colonel William Light**

OK -so this is not actually IN the Park Lands but we couldn't resist plugging this one. View the collection of Colonel Light and hear Glen Woodward describe Light's life. Thursday 18 & Tuesday 23 May, 11.30am & 12.30pm; 40 minutes. Adelaide Town Hall, 128 King William St. Free, but [bookings required.](#)



**Free Community Yoga - 12.30pm Wednesdays and Fridays**

Free community Yoga for all ages & fitness levels. Please bring your own mat or towel. Off War Memorial Drive, in Karrawirra (Park 12) just north of the Uni footbridge, near the boat sheds. [Click here for more details.](#)



**CHANGING OF THE GUARD IN APPA LEADERSHIP**



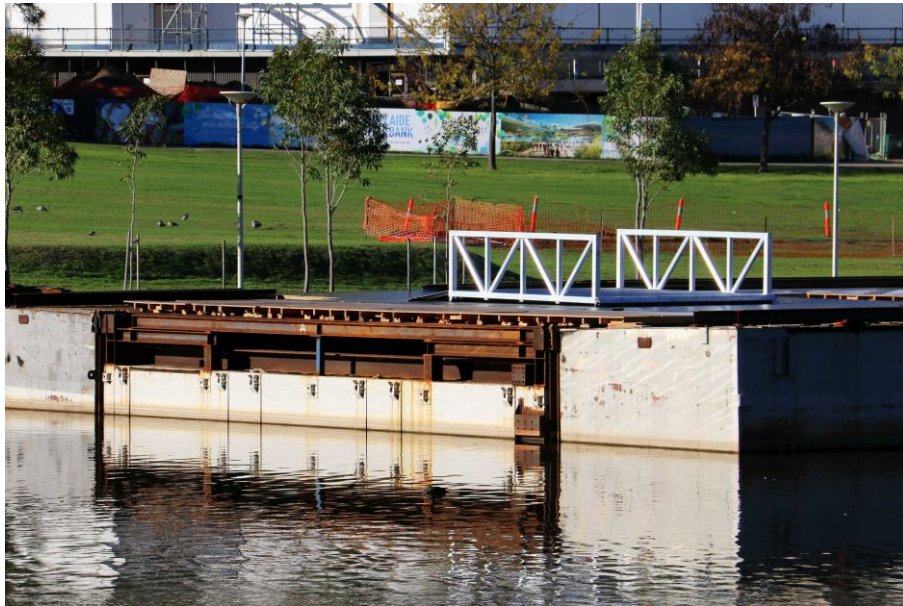
It was an historic day for APPA on 30 April 2017, with the changing of the guard at the helm of our little grass-roots community organisation. After two spells as President, totalling well over a

decade from the early 1990's Ian Gilfillan (left) stepped down from the role of President. Ian has  
 inspiration to Park Lands lovers over many years, and is still maintaining his involvement  
 a member of the APPA managing Committee for 2017-18.

The new Committee elected at the AGM on 30 April comprises: President Shane Sody (right);  
 Secretary Damien Mugavin; Treasurer Bruno Zeni; and the other Committee members: Ian Gilfillan,  
 Sarah Gilfillan, Ted Jennings, Hamish Ramsay, Marisha Matthews, Mia Taylor and Hero Weston.

<http://www.adelaide-parklands.asn.au/contact/>

## UNCERTAIN FUTURE FOR 'UGLY HULK' IN THE TORRENS



Last year, when plans were being drawn up for the 2017 Festival of Arts, festival organisers sought and received permission for a concrete platform (like a barge) to be erected alongside Elder Park in the River Torrens. The barge was to be there for just two months during which time it would be used as an entertainment venue, the "hub" of the Festival.

The 'Riverbank Palais' was intended to evoke the floating "Palais De Danse" in a similar location in the 1920's. It would seem that the idea was a hit, at least during this year's Festival. The only trouble is that the concrete eyesore was NOT removed promptly, as promised.

The excuse was a new argument that it should stay in place at least until July so it could be reused for another event. Read more here:

<http://www.abc.net.au/news/2017-05-09/future-of-ugly-hulk-resting-in-the-river-torrens-uncertain/8509680>

## EIGHT YEARS AHEAD OF BRITAIN

Not only is Adelaide the only city in the world ringed by Park Lands, we also hold an apparent world record as the world's first publicly funded Park.

There have been claims made on behalf of Birkenhead Park in Merseyside England, the first publicly-funded in Britain, which was created in 1847.

However, Adelaide was several years ahead of that. Colonel Light surveyed the Park Lands in 1837 and the publicly-funded position of Park Lands Superintendent was announced in October 1839.



[KEEPER OF THE PARK LANDS.](#)

Subscribe

Past Issues

Translate ▾

RSS

- NICK BOYS (ULL, Esq.), has been appointed by his Excellency to be Superintendent of Lands of Adelaide. The following are the duties which the person holding this office has to perform:-
- To allow no person to burn lime or quarry stones without authority in writing from the Colonial Secretary.
  - To allow no person to dig sand or throw down rubbish except in the places pointed out by the Town Surveyor.
  - To allow no person to cur or carry away timber, standing or fallen, except for public purpose or by order of the Town Surveyor.
  - To allow no person to open quarries of building stone, except in places pointed out by the Town Surveyor.
  - To oblige all persons digging limestone by permission to level the ground from which it is taken.
  - To remove all nuisances.
  - To prevent injury being done to public property of any description on the Park Land.
  - To report all irregularities and breaches of these instructions to the Colonial Secretary.

## CALLING OUT SPORTS PRIVATISATION



APPA has recently made detailed submissions to the Adelaide City Council on two proposals that could have far-reaching consequences for the Park Lands.

Firstly, financial pressure is growing on the Council to commercialise at least part of the North Adelaide Golf Course, in Pirltawardli (Park 1).

Suggestions have been made that a multi-million dollar function centre might be permitted. There is already a three-storey club house and function centre just off Strangways Terrace (pictured above). A proposed Golf Course Master Plan was considered by the Park Lands Authority in April, in a secret agenda item. Secrecy was claimed as the matter was supposedly commercial in confidence. Commerciality in managing the Park Lands? Uh-oh. We've heard that before.

Here's APPA's submission to the Council on the Golf Course Master Plan:  
[https://drive.google.com/open?id=0B\\_jF9H1\\_iO8AMkFzVTRDZVRGaU0](https://drive.google.com/open?id=0B_jF9H1_iO8AMkFzVTRDZVRGaU0)

Secondly, the Council will soon consider an ambit claim by two hockey clubs for a new stadium with synthetic pitches and yes, yet another function centre.

Here's what APPA had to say to the Council about that:  
[https://drive.google.com/open?id=0B\\_jF9H1\\_iO8AWURYOWIfd2R5Rjg](https://drive.google.com/open?id=0B_jF9H1_iO8AWURYOWIfd2R5Rjg)



[Subscribe](#)[Past Issues](#)[Translate](#) ▾[RSS](#) 📡

Not just playing surfaces: the proposal includes concrete walls, locked gates, administration facilities and a function centre.

Take Action here: <http://www.adelaide-parklands.asn.au/take-action>



Share



Tweet



Forward

## KEEPING TRACK OF GROUNDWORKS



It's hard to keep track of all the infrastructure works that are going on the Park Lands at the moment. Please forgive us if we've left something off this list. You can click on the links to find out more about any of these projects.

- [O-Bahn extension](#) – seriously affecting Parks 13 and 14
- [Sewage main upgrade](#) – seriously affecting Parks 25, 27 and Park 1
- [Torrens Rail Junction Project](#) – seriously affecting Parks 1 and 27
- Riverbank stabilisation and re-vegetation – alongside War Memorial Drive in Park 11 (see pictures above and below)
- More riverbank stabilisation works near the University footbridge in Park 12
- Refurbishment of an SA Water underground water tank – a fenced off area of Park 4

# Tainmuntilla (Park 11)

## What's happening in Tainmuntilla (Park 11)

The temporary compounds currently located on the Northern Banks of the Torrens lake and the isolated closures of the Linear Trail are in place to accommodate the contractors and team working on the native revegetation and bank stabilisation of the area.

Works will see the Linear Trail relocated to a safer alignment, the risk of erosion mitigated and an increase in biodiversity with the historical local native flora returned to site.

### Duration

Works are set to start early April 2017 and aim to be completed July 2017.

### Contact

City of Adelaide - 8203 7203



## EVENT: GREATER AND GREENER 2017.



The City Parks Alliance, (like APPA, one of the member organisations of *World Urban Parks*) is hosting a conference later this year in the USA to explore "the power of parks in supporting healthy, resilient and sustainable cities".

Attendees will learn best practices of urban park design, management and programming and network with experts in the public, private and non-profit sectors. The theme of the conference is: *Parks: Connecting Cities, Cultures, and Generations*.

More details in the [May newsletter of World Urban Parks](#)

## PHOTOS OF THE DAY - RECENT HIGHLIGHTS



From above the corner of South Tce & West Tce, an aerial view of (to the right) Parks 21W, 21, 20 etc and (to the left) West Tce cenetery in Park 23, with Parks 24 and 25 in the distance

**Subscribe**

**Past Issues**

**Translate** ▼

**RSS** 📡



Flags at Womadelaide this year - Botanic Park, Tainmuntilla (Park 11)



Hockey practice at Nantu Wama (Park 6) off Kingston Tce



River Torrens, early morning, near the University footbridge in Karrawirra (Park 12)

Subscribe

Past Issues

Translate ▾

RSS 



Early morning train, and sculpture: 'Eucalyptus Alive' in Narnungga (Park 25) off Port Rd

The Park Lands 'photo of the day' series has been running since May 2014, and the collection of Park Lands photos now numbers well over 1,100. We maintain (and gradually grow) 37 separate albums for each one of our 30 Parks, six squares (and one album for 'Alienations'). To browse the photos follow the link below to 'Our photos on Flickr'.



APPA on Facebook



@adelparklands



APPA website



Our photos on Flickr



Share



Tweet



Forward

Copyright © Adelaide Park Lands Preservation Association, Inc. [2015] All rights reserved.

[unsubscribe from this list](#) [update subscription preferences](#)

