

[Subscribe](#)[Past Issues](#)[Translate](#) ▼[RSS](#) 📡

e-Gazette No. 035 - February, 2018. If this email doesn't look right  
(e.g. if there are no pictures) then:

[View this email in your browser](#)



## In this *e-Gazette*....

- [LAW-BREAKING OR LAW-IGNORING?](#)
- [IGNORING THE PUBLIC](#)
- [NEXT MONTH: AN ELECTION SPECIAL EDITION](#)
- [HELIPAD: "WE TOLD YOU SO"](#)
- [FEBRUARY 2018 CONSTRUCTION SITE BULLETIN](#)
- [5 TONNES OF ALUMINIUM COMING TO PINKY FLAT IN 2018](#)
- [PARK LANDS VIDEO OF THE MONTH](#)
- [WHAT'S ON IN THE PARK LANDS OVER THE NEXT FEW WEEKS](#)
- [MOTOR RACING IN THE PARK LANDS - IN ITS DEATH THROES?](#)
- [YOU DON'T NEED TO BE A MILLIONAIRE TO BE AN ART SPONSOR](#)
- [HOW FAR CAN AN ALCOHOL LICENCE EXTEND?](#)
- [NEW SPORT FACILITY LICENCE IN VICTORIA PARK](#)
- [BRIEFLY, IN OTHER PARK LANDS NEWS](#)
- [PHOTOS OF THE DAY - RECENT HIGHLIGHTS](#)

---

**LAW-BREAKINGORLAW-IGNORING?**

Subscribe

Past Issues

Translate

RSS



**23—Steps regarding change in intended use of land**

- (1) If land within the Adelaide Park Lands occupied by the Crown or a State authority is no longer required for any of its existing uses, the Minister must ensure that a report concerning the State Government's position on the future use and status of the land is prepared within the prescribed period.
- (2) A report under subsection (1) must include information on the condition of the land and on the action (if any) that would be required in order to make the land suitable for public use as park lands.

Premier Jay Weatherill and his Deputy, John Rau would prefer that no-one noticed the pesky little Section 23 of the *Adelaide Park Lands Act 2005* (reproduced above.)

The old Royal Adelaide Hospital site is part of Park 11 within the Adelaide Park Lands. It is gazetted as Park Lands, and clearly it is not needed any longer as a hospital. By law, the Government should have commissioned a report on how to "make the land suitable for public use as park lands."

But what is the Government doing instead? They've [short-listed six "design teams" of architects](#) to dream up something new and huge to build on the site.



These poor people probably haven't been told that their appointment is not consistent with Section 23 (above). They are being asked to advise the Government on the wrong question.

There are four heritage-listed buildings on the old RAH site. A good architect could come up with a brilliant plan for adaptive reuse of those buildings.

But the six design teams (who are among those pictured above) haven't been asked to do that. Rather, they've received funding to create "concept designs" for a new Adelaide "icon".



Subscribe

Past Issues

Translate ▾

RSS 📡



An *icon*? We've heard that one before.

### IGNORING THE PUBLIC

In addition to either ignoring or breaking the law, the appointment of these design consultants is an example of the State Government also ignoring the public.

The State Government asked the public, twice, what to do with the old RAH site. There was a 2015 design competition with a "People's choice" award that proposed using the rubble from all the demolished buildings to make a new mountain just off North Terrace.



The Government-run "Office for Design and Architecture" has removed all information about the 2015 competition from its website, but this was the winning entry, with lots of Park Lands.

Then, in 2016-17 there was another round of public consultation. The answer was loud and clear. ["We want it returned to the public, with lots of open space!"](#)

<https://indaily.com.au/news/2017/05/03/public-supports-green-space-new-cultural-venues-old-rah-site/>

However the Government didn't like that answer. The public hasn't supported the Government's plans, so the Government is now paying experts to tell the Government what the Government wants to hear.

[According to 'Renewal SA'](#) the old RAH site will have an "economic focus" and will:

- Advance the State's ten economic priorities
- Create new employment opportunities, and
- Deliver an economically viable precinct that integrates with the East End

In other words, Renewal SA has told instructed by their political masters, to ignore section 23 of the Park Lands Act 2005 and treat this land as if it were a commercial opportunity rather than the Park Lands that belong to all South Australians.

Don't let the Government get away with ignoring or flaunting section 23. [Take action now](#) before the land is lost for another 180 years.  
At the very least, [please sign our petitions](#) to the Premier, Jay Weatherill, and Opposition Leader Steven Marshall, to keep the old RAH site for public purposes.

Share Tweet Forward

NEXT MONTH: AN ELECTION SPECIAL EDITION

Some people who have read the story above, may conclude that APPA is campaigning against the State Labor Government in the midst of an election campaign.

This is not the case. APPA is non-partisan and we will not advocate for or against any political party. However we will point out how parties, candidates and elected members of Parliament affect the Park Lands with their words and deeds. The Premier and Deputy Premier are in our sights (above) because of decisions they have made to disregard one Park Lands law.

We are running [two separate petitions](#) urging both Premier Jay Weatherill and Opposition leader Stephen Marshall (separately) to respect the status of the Old Royal Adelaide Hospital as Park Lands and "keep Public Land Public"

During the election campaign, we are surveying all political candidates seeking their views on how to protect the Park Lands. Some candidates have already responded to our survey. We expect many more responses over the next few days and weeks. We will bring you the response from all candidates in our March newsletter, a special election issue that will hit your inbox just a day or two before the State election on 17 March.

HELIPAD: "WETOLDYOU SO"



Victory claimed!

In September 2017 the Adelaide Council consulted on a proposal to amend the 'Community Land Management Plan' for Park 27 because they wanted to put a commercial joyflight helicopter business at this beautiful riverside location.

This is the same riverside location in Helen Mayo Park (formerly part of Bonython Park) that the State Government is also targeting for a luxury hotel. See <http://www.adelaide-parklands.asn.au/current-issues/>

APPA's submission pointed out that not only was this site a very poor choice for a helipad - the

Subscribe

Past Issues

Translate

RSS

proposal was also illegal.  
 The results of the Council's consultation on the rezoned site in October 2017 have been that supporters of the helipad had been offering a prize (of a \$1,500 helicopter flight) to persuade people to vote "yes" to the Park Management Plan change. Even worse for the Council's plans, a commercial joyflight operator who used this site on a one-off basis in September 2017 was the cause of an "operational incident" with Adelaide Airport Air Traffic Control which led to the diversion of an inbound passenger jet. The Civil Aviation Safety Authority, investigating the incident, asked the Council to think again about the suitability of the site.

After getting new independent advice, the City Council at its meeting on Tuesday 30 January 2018 is now set to ditch this site and look again at other possible locations for a helipad, just as APPA has been urging the Council to do. See our November 2017 newsletter: <https://mailchi.mp/eb469cf889dc/councils-helipad-disaster-how-to-make-it-right?>

Congratulations to all those who joined APPA in pointing out to the Council the incompatibility of a noisy commercial enterprise with the world-unique Adelaide Park Lands.

The Lord Mayor seems to have taken this as a learning experience. Finding a new helipad site, he now says, is "not a priority": <https://indaily.com.au/news/local/2018/02/06/not-priority-haese-uninterested-another-adelaide-helipad/>

 Share  Tweet  Forward

### FEBRUARY 2018 CONSTRUCTION SITE BULLETIN

It can be hard to keep up with all the construction work that is under way, at any one time, in the Park Lands.

Here's just three of the projects currently under way, with pictures taken just a few days ago, in February 2018.



#### **BOTANIC HIGH SCHOOL, Park 11.**

The State Government has simply taken over a patch of Park Lands for a new 7-storey high school, off Frome Road in Park 11. Due for completion early in 2019.



#### **COMMUNITY HUB**

Landscaping works for a new "community hub" and upgraded "Marshmallow playground" off Glen Osmond Rd in Pelzer Park / Pityarilla (Park 19).

You can read about the plans for this Park here: <http://yourfutureadelaide.com.au/projects/pityarilla-activity-hub/>

The [Torrens Rail Junction Project](#) - alienating large swatches of Park 1 and the pictured site in J.E. Brown Park (Park 27A) - although when eventually finished it is not

supposed to be taking any more Park Lands than the existing rail lines.

Subscribe

Past Issues

Translate ▾

RSS 



### 5 TONNES OF ALUMINIUM COMING TO PINKY FLAT IN 2018



Adelaide City Council has given its approval for this sculpture: "Uniting a Nation" by Terence Plowright to be inserted into the River Torrens just offshore from Pinky Flat.

Subscribe

Past Issues

...cil at its meeting on 30 January, accepted a request from the Art Gallery of SA to host th  
work of art in the Park Lands, although there was some debate about the preferred location

Translate

RSS

The Council's preference was for a site on the river, to allow the sculpture to be reflected in the water.

With the Council's blessing, the State Government's planning system will now become involved.



The Council was considering four sites for the Plowright sculpture, and expressed its preference for Option 1.

Share Tweet Forward

PARK LANDS VIDEO OF THE MONTH



Spend three minutes in Bunday's Paddock / Tidlangga (Park 9) Next month: Bullrush Park / Warnpangga (Park 10).

Share Tweet Forward

WHAT'S ON IN THE PARK LANDS OVER THE NEXT FEW WEEKS

Subscribe

Past Issues

Translate

RSS

There are always events scheduled in the Park Lands, many of them free, and there are always opportunities to enjoy the Park Lands on your own, or with friends or family. Take a look at our picture gallery for hints about interesting spots to visit. This month's featured opportunities are:



**Adelaide Fringe** 16 February to 18 March  
There are multiple Fringe venues in the Park Lands, including:

- The **Garden of Unearthly Delights** in Rundle Park / Kadlitpina (Park 13)
- **Gluttony** in Rymill Park / Murlawirrapurka (Park 14)
- **Royal Croquet Club** at Pinky Flat in Tarntanya Wama (Park 26)
- **Adelaide Botanic Gardens** (Park 11)

Peruse the whole Fringe program and venues here: <https://www.adelaidefringe.com.au>



**Guided walk through Bonython Park** / Tulya Wardli (Park 27). Sunday February 18th 9.30am to 11.30am. Join APPA President Shane Sody for a stroll through the home of circuses, river birds, railway lines, a memorial forest and discover its continuing role in Adelaide's culture. Gold coin donation. (Free for APPA members). Meet at the Bonython Park kiosk. Children and dogs welcome!



**Personal training "boot camp"** every Saturday 8am to 9am Rymill Park / Murlawirrapurka (Park 14). First session free; subsequent sessions \$10. Call or message Alexandra on 0400 290 288, or contact "Running Lemur" on Facebook <https://www.facebook.com/RunningLemurPT/>.



**WOMADELAIDE 2018**. March 9 to 12, Botanic Park. One of Australia's favourite outdoor festivals, not only because of the unique and extraordinary cultural program of Music, Arts & Dance from around the world, but also because of its beautiful location and friendly vibe. Visit the APPA stall while you're there! <https://www.womadelaide.com.au/>



**ParkRun** - 8.00am to 9.30am every Saturday at the Torrens weir off War Memorial Drive. A free, weekly, 5km timed run / walk open to everyone, along the River Torrens. People of all abilities and ages, from beginners to Olympians, are encouraged to take part. Register in advance (for free) at <http://www.parkrun.com.au/>

Share Tweet Forward

**MOTORRACING IN THE PARKLANDS - IN ITS DEATH THROES?**



[Subscribe](#)[Past Issues](#)[Translate](#) ▼[RSS](#) 📡

*Victoria Park / Pakapakanthi (Park 16) . Photo: Simon Trnovsky*

We are not likely to see an announcement before the Adelaide 500 motor race next month, nor any announcement before the State election.

Despite the State Government's contract with motorsport organisers to hold the event until 2021, APPA believes the writing is on the wall - and the five-month annual takeover of our largest single Park - Victoria Park / Pakapakanthi (Park 16) - for a mere four-day event might soon be a thing of the past.

The event this year is without its former sponsor, Clipsal. Taxpayers, therefore, are picking up a large part of the bill for the noise, the traffic disruption, the inconvenience, the waste of fossil fuel, and the extra air pollution caused by the event.

The State Government refuses to reveal, in its Budget papers, how much taxpayer subsidy goes into the event. Tourism SA was budgeting for a net \$38.7 million loss in this financial year for "developing and attracting new events and managing and growing existing events." The Budget Papers do not indicate how much of that loss is attributable to each event.

In contrast to the annual motor racing event, the Tour Down Under bicycle event in January causes only a fraction of the disruption, with very minor impact on Park Lands, and seems to have an equivalent benefit to the SA economy.



Subscribe

Past Issues

Letter from Tourism Minister Leon Bignell, 17 October 2017

Translate

RSS

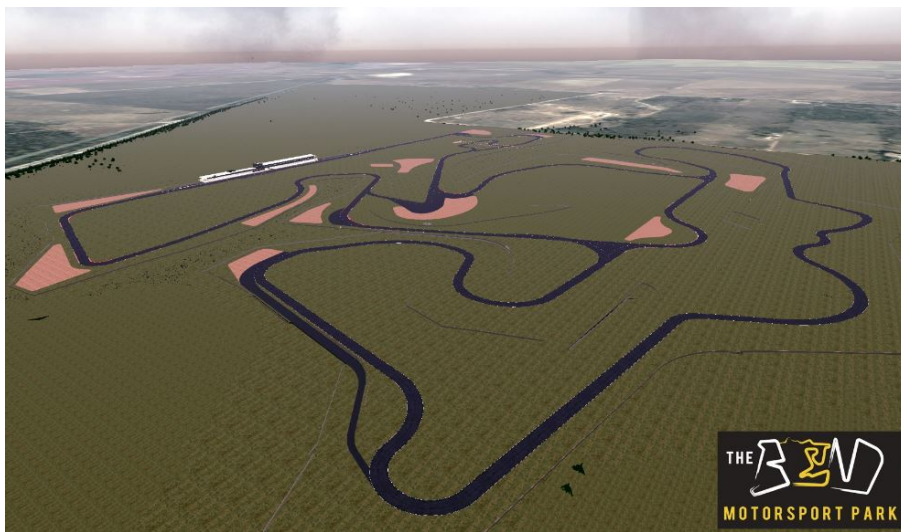
Government is proud to have secured the Adelaide 500 through to 2021. The Adelaide 500 attracts an average of 250,000 local, national and international spectators and provides South Australia with an economic benefit of more than \$60 million, more than 400 new full time equivalent jobs, and over 70,000 hotel bed nights.

SA Government's Budget Papers, Volume 4, page 139

Highlights 2016-17

- The 2017 Santos Tour Down Under had a record year attracting 43 000 event specific visitors, injecting \$56.5 million into the South Australian economy and creating 683 full-time equivalent jobs as well as generating \$202 million of media coverage. The Santos Women's Tour, classified as a Union Cycliste Internationale (UCI) 2.2 ranked event, saw 17 teams competing including 10 international teams.

Note the contrast in the Government spin: the motor race attracts "spectators" (mostly locals) while the bike race attracts "event-specific visitors". The Tourism Minister Leon Bignell did not issue any media release in 2017 on the tourism result of last year's event. The previous year, 2016, he made clear that there were only 13,500 interstate visitors. <http://www.premier.sa.gov.au/index.php/leon-bignell-news-releases/673-clipsal-500-records-most-successful-v8-supercar-race-ever>



Motor racing enthusiasts need not be concerned about losing the annual event from SA. There is now a purpose-built facility at Tailem Bend ready to take over from the the Adelaide Park Lands as a much more appropriate site for car racing.

YOU DON'T NEED TO BE A MILLIONAIRE TO BE AN ART SPONSOR



Nick Mount, Wakefield and East. A Still Life, 2016 (2016 WINNER) (Photographed by Pippy Mount).

There are a few limited opportunities left to become a minor sponsor of the 2018 Park Lands Art Prize.

[Subscribe](#)[Past Issues](#)[Translate](#) ▼[RSS](#) 

at the \$500 level (and above) will be able to have 'first go' at buying their choice of artwork at the invitation-only "Preview for Sponsors and VIPs" immediately prior to public exhibition.

All donations at whatever level will be gratefully acknowledged on the 'honour board' at the exhibition, but only Sponsors (at the level of \$500 or upwards) are eligible for the Preview event.

Sponsors will be recognised in all appropriate publicity material including the Prize's web site, at the exhibition of artworks, the exhibition opening invitation and in the exhibition catalogue.

For businesses, sponsorship with benefits as outlined above normally qualify as a tax deductible expense.



Opening night at the previous (2016) Adelaide Park Lands Art Prize

Will you help the Adelaide Park Lands Art Prize (and support the Adelaide Park Lands) by becoming a Sponsor? If so, don't delay.

Banking Details for direct payment:

- Adelaide Park Lands Art Prize Account
- BSB 015056
- A/C No. 382066143
- Reference: Your name
- Email notification: [info@parklandsart.com](mailto:info@parklandsart.com)

If paying by cheque:

- Make cheque payable to APPA, Adelaide Park Lands Art Prize Account.
- Post cheque to: PARK LANDS ART PRIZE, c/o BK Partners, PO Box 4053, Norwood South, SA 5067

For queries please call: Maggie Fletcher 0417 896 779 or Hamish Ramsay 0488 084 127

For more information about the Art Prize, go to [www.parklandsart.com](http://www.parklandsart.com)



Share

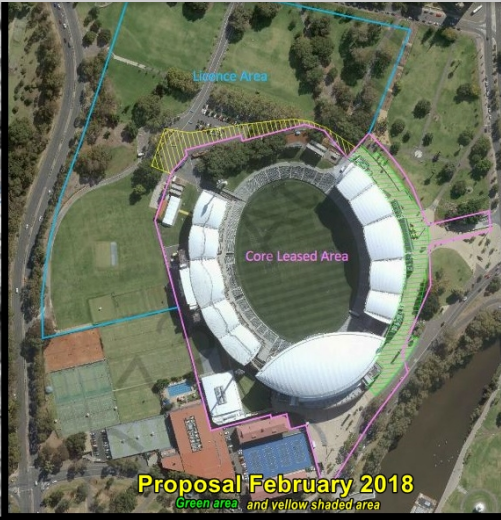
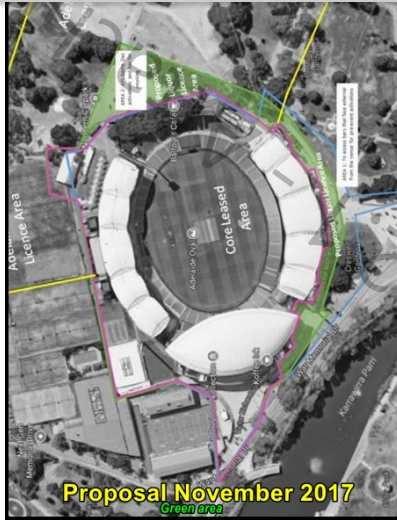


Tweet



Forward

**HOW FAR CAN AN ALCOHOL LICENCE EXTEND?**



In our recent newsletters:

- [January 2018](#); and
- [November 2017](#)

we have covered the current (ongoing) process of whether and how far the Adelaide Oval Stadium Management Authority will be allowed to extend its liquor licence outside the grounds of the Oval.

The Liquor Licensing Commissioner has the final say, but Adelaide City Council (as the landlord) has been asked for its views, and the Council was reluctant to support the Stadium Management Authority's initial request, covering the area marked in green on the plan at left.

The Authority had wanted to stage concerts and other events catering to up to 18,000 people, outside the Oval within Stella Bowen Park, part of Tarntanya Wama (Park 26), and sell liquor during those events.

After the Council pushed back, the Stadium Management Authority came up with a compromise proposal covering a smaller area, marked in yellow and green on the plan at right.

The City Council at its meeting this week (Tuesday 13 February) voted to support such a change, with amendments to safeguard the interests of North Adelaide residents moved by Cr Phillip Martin.

If the Council, as landlord, has its views accepted by the Liquor Licensing Commissioner, then alcohol sales in those smaller areas will be possible only when events are being held inside the stadium, and then only to people who have tickets to the event inside.

### NEWSPORT FACILITY LICENCE IN VICTORIA PARK

Preference given to:  
sports teams, schools,  
community clubs

## Key



2.6-hectare area available to licence



Proposed NEW  
Change room and Public Toilets



Existing  
Public Toilets



Additional sports fields programmed  
through hire agreements.



The City Council is currently going through a process, similar to its process last year for sporting facilities in other Parks – seeking Expressions of Interest in "licencing" the area marked in red above.

There are two key differences in the current process compared to the process undertaken last year in Park 2 and Park 20.

In Victoria Park, there is no current licensee for the area marked in red. Secondly, the Council is intending to construct, by July this year, new toilets, change rooms, and a storage area at the spot marked with a yellow star.

More details here: <https://yoursay.cityofadelaide.com.au/roi-vicparkpakapakanthi-sportsfacilities-winterseason2018>



In-between the two proposed sporting field areas on either side of Victoria Park there is a fenced enclave which features rare species of native vegetation, including Spear grass, Early Nancy, Tiny Star, and Garland Lily. The City Council has a formal management plan in place with the State Government Environment department to protect these species.

### BRIEFLY, IN OTHER PARKLANDS NEWS

APPA's [letter to the Lord Mayor in January](#), urging the Council

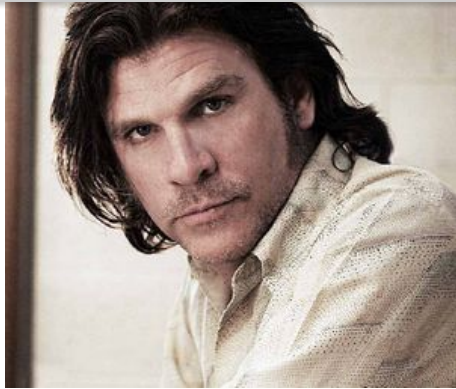


Subscribe

Past Issues

Translate ▾

RSS 



Adelaide Central Market and have a late night drink at the Grace Emily" he told The Advertiser's "Confidential" column earlier this month.



Greening Australia volunteers and others have been getting their hands dirty in Ellis Park / Tampawardli (Park 24) just off Glover Avenue, alongside Adelaide High School.

[According to the Adelaide Sustainability Centre](#), this carbon sequestration demonstration site fosters "a better understanding of carbon offsets and the important role that plants can play in creating a carbon neutral city. The site provides an outstanding and inspiring example of an open, urban space that has been transformed to maximise habitat for native wildlife, contribute to local food production and create unique nature-based play areas for children and relaxation areas for adults."



In the context of the looming State election, APPA President Shane Sody recently was asked to contribute one paragraph to the *City Messenger* on the topic: "[What is the one thing that can be done to make Adelaide a better place to live, work and play?](#)". He offered this:

*"To stop seeing the Adelaide Park Lands as a random collection of potential development sites, or an obstacle to an outdated conception of "progress" and start encouraging, instead, a sense of pride in our world-unique irreplaceable icon. The best signal to instill this sense of pride in our city, would be for the incoming State Government to propose, support and fund an application for World Heritage Listing for the Adelaide Park Lands."*



We thought we'd heard it all before, but there's now a new reason to permit car parking on Park Lands. **Cars on Park Lands help prevent terrorism!** We are not kidding, It's so tempting to send this up, but Sir Montefiore Scuttlebutt, writing in *The Adelaide Review*, has beaten us to it: <https://www.adelaidereview.com.au/opinion/general->

Subscribe

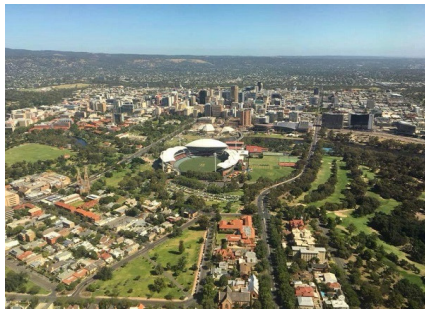
Past Issues

[opinion/montefiore-adelaide-ovals-bollards-steed](#)  
[face-terror/](#)

Translate ▾

RSS 

## PHOTOS OF THE DAY - RECENT HIGHLIGHTS



From the top:

- a) Cyclists commuting on the Park Lands trail, through Ellis Park / Tampawardli (Park 24) near the Mile End railway station
- b) Palmer Gardens / Pangki Pangki (Park 28), Tarntanya Wama (Park 26) and part of Possum Park / Pirltawardli (Park 1) contributed by SA Greens leader Mark Parnell, MLC
- c) Team training run in Blue Gum Park / Kurangga (Park 20) near South Terrace
- d) Tree roots in the South Park Lands Creek, Carriageway Park / Tuthangga (Park 17) contributed by Simon Trnovsky.
- e) The SA Police "greys" out for an early-morning training walk in Bonython Park / Tulya Wardli (Park 27) off Port Road

The Park Lands 'photo of the day' series has been running since May 2014, and the collection of Park Lands photos gathered over almost four years, now numbers almost 1,400. We maintain (and gradually grow) more than 40 separate albums: one for each one of our 30 numbered Parks, six squares (and several albums for 'Alienations'). To browse the photos follow the link below to ['Our photos on Flickr'](#).


[APPA on Facebook](#)

[@adelparklands](#)

[APPA website](#)

[Our photos on Flickr](#)



**Subscribe**

**Past Issues**

[Share](#)



[Tweet](#)



[Forward](#)

**Translate** ▼

**RSS**

*Copyright © Adelaide Park Lands Preservation Association, Inc. [2015] All rights reserved.*

[unsubscribe from this list](#) [update subscription preferences](#)

