

e-Gazette No. 036 - March, 2018. If this email doesn't look right
(e.g. if there are no pictures) then:

[View this email in your browser](#)



In this *e-Gazette*....

- [BEFORE YOU VOTE: SEE HOW THEY ANSWERED \(OR DODGED\) 5 QUESTIONS](#)
- [OTHER PARK LANDS ELECTION PROMISES](#)
- [APPA AT WOMADELAIDE](#)
- [MARCH 2018 CONSTRUCTION SITE BULLETIN](#)
- [RAU: SENTENCE FIRST - VERDICT AFTERWARDS!](#)
- [PARK LANDS VIDEO OF THE MONTH](#)
- [WHAT'S ON IN THE PARK LANDS OVER THE NEXT FEW WEEKS](#)
- [WIN SOME, LOSE SOME](#)
- [LAST WEEKS FOR ART PRIZE ENTRIES](#)
- [SAVE THE DATE - APPA's AGM - SUNDAY 29 APRIL](#)
- [QING DAO ROSE GARDEN AND THE 'SONG OF THE WIND'](#)
- [DID YOU KNOW?](#)
- [PHOTOS OF THE DAY - RECENT HIGHLIGHTS](#)

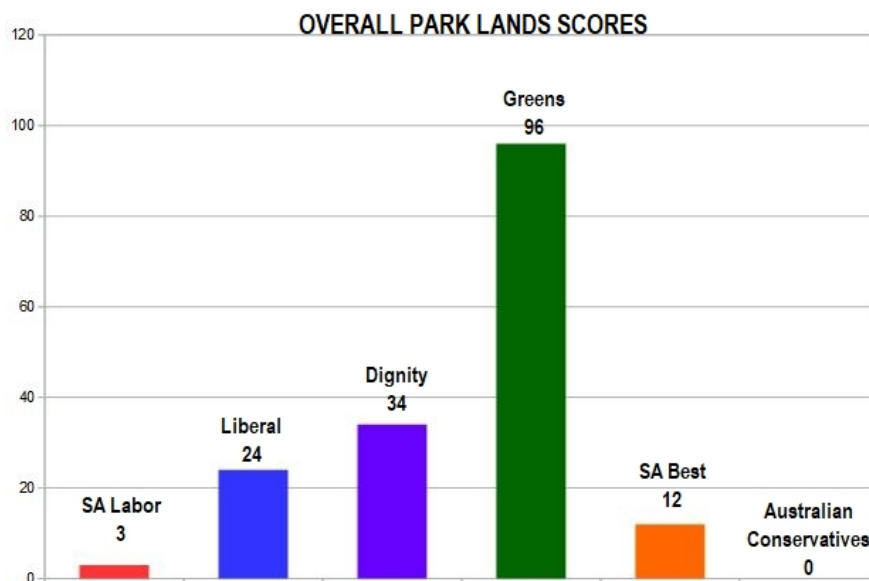
BEFORE YOU VOTE: SEE HOW THEY ANSWERED (OR DODGED) 5 QUESTIONS



For the State election on 17 March 2018, APPA surveyed all candidates to determine their attitude to our priceless heritage.

It was a simple survey, with only a few questions. Nevertheless, some parties did not respond. Notably, [SA Labor sent a letter](#) which failed to respond to any of our questions.

We have scored all the parties on their responses to our questions, insofar as their responses indicate an appreciation of, and willingness to protect the Park Lands, for the benefit of the public, rather than sectional interests. The better their responses, the larger their colours appear in the graph below. Two parties (SA Labor and Australian Conservatives) returned no response to any of our questions.



How did we arrive at these scores? Visit [the State election page on our website](#) to see the questions we asked and the replies we got.

Despite the plethora of minor parties and speculation about a hung Parliament, it's still likely that, whichever way the election goes, either Jay Weatherill or Steven Marshall will be Premier afterwards. Accordingly, we are still running [two separate petitions](#) urging both leaders (separately) to respect the status of the Old Royal Adelaide Hospital as Park Lands and "keep Public Land Public".

Both leaders unfortunately are still committed to handing over at least part of the old RAH Park Lands site to private commercial interests. Visit our ["take action" page](#) where you'll find two links to add your name to each of the two petitions.

Share
 Tweet
 Forward

OTHER PARK LANDS ELECTION PROMISES

Unrelated to our candidate survey, both SA Labor and the Liberal Party have made their own promises, about specific Parks on opposite sides of the City.

Labor has [promised to spend \\$3 million pouring tonnes of concrete into Gladys Elphick Park / Narnungga \(Park 25\)](#) which is currently undergoing a major landscaping. (See the "March Construction Site" story below.) The concrete would be for a skate park, off West Terrace, opposite Hindley street. It's not clear how the skate park proposal would affect ongoing landscaping works. The City Council had earmarked a different site, in Helen Mayo Park (Park 27) near the Morphett Street bridge, for a skate park.

On the other hand, [the Liberal party is promising to spend an additional \\$1 million](#) to reduce the time taken to build and dismantle car racing infrastructure in Victoria Park / Pakapakanthi (Park 16) each year. [In our newsletter last month](#) we expressed hope the race might be moving to Tailern Bend in the near future.

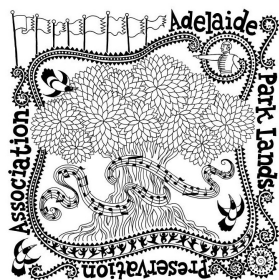
We're not excited about either of these promises. We'd rather see the next State Government pursue World Heritage listing for the Park Lands.

APPAATWOMADELAIDE



One of the biggest events held in the Adelaide Park Lands throughout the year, the four-day WOMADelaide festival in 'mad March' last weekend was the perfect opportunity to highlight to tens of thousands of potential new supporters both the Park Lands, and the many threats that they face.

A team of APPA member-volunteers welcomed a stream of visitors from Friday afternoon through to late on Monday night.



We were selling a few products featuring a purpose-designed logo from [artist Sally Heinrich](#). However, the aim of the sales was not to raise money - rather to use the opportunity to spread both love of the Park Lands, and raise awareness of the many threats that they face.

Welcome to the newsletter subscribers who are seeing this monthly *e-Gazette* for the first time after joining our mail list at WOMADelaide. We hope you will be more than a passive on-looker. Please visit our website to see what else you can do to help us help the Park Lands.

<http://www.adelaide-parklands.asn.au/take-action/>

Subscribe

Past Issues

Translate ▾

RSS 



WOMADelaide is not only a great festival, it's also a showcase for Botanic Park – a priceless arboretum containing hundreds of trees: some rare, and some that pre-date European settlement in Adelaide. Horticulture staff from the Botanic Gardens were on site throughout the festival, to try to prevent or minimise damage to any of the trees.

For the most part, festival goers seemed to respect the environment and we hope that WOMADelaide can continue to be held there for many years to come.

P.S. It's a good thing that feathers are biodegradable!



Share



Tweet



Forward

MARCH 2018 CONSTRUCTION SITE BULLETIN

It can be hard to keep up with all the construction work that is under way, at any one time, in the Park Lands.

Here's just three of the projects currently under way, with pictures taken a couple of days ago, in March 2018.



Netball Courts re-surfacing - Park 22

Work is nearing completion in Josie Agius Park / Wikaparntu Wirra (Park 22) off Goodwood Rd where the netball courts have been resurfaced, expanded (4 additional courts added) and new lighting installed. There's also a new footpath being laid (pictured) from the Anzac Highway side of the Park.



SOUTH PARKLANDS CREEK

Rehabilitation. The City Council's long-term project to rehabilitate the South Park Lands creek is on schedule. Works in Peppermint Park / Wita Wirra (Park 18) were completed in 2017. Works in Pelzer Park / Pityarilla (Park 19) are nearing completion; and works near Beaumont Road in Carriageway Park / Tuthangga (Park 17) (pictured) are expected to be complete in June 2018. Click the picture to read more.

Landscaping in Park 25. What the State Government describes as "a high-quality formal park" is

[Subscribe](#)

[Past Issues](#)

being developed in Gladys Elphick Park / Namungga (Park 25) between Port Road and Glycer Avenue.

[Translate](#) ▾

[RSS](#) 📡



The landscaping is intended to "offer a place of respite" for staff and visitors of the new Royal Adelaide Hospital and adjacent North Terrace buildings. Click the picture to read more.

Apart from the sites pictured above, there is ongoing work ([that we featured last month](#)) to:

- create a [new 'activity hub'](#) in Pelzer Park /Pityarilla (Park 19); and
- improve the rail transport corridor through J.E. Brown Park (Park 27A) with the [Torrens Rail Junction Project](#).

APPA understands that neither of these projects will lead to any permanent loss of Park Lands and on that basis we have raised no objections.

However the opposite is true in [Park 11](#), where the ongoing construction of the new "Botanic High School" off Frome Road has erased what little remained of Park Lands in that vicinity.



RAU: SENTENCE FIRST - VERDICT AFTERWARDS!

... "Let the jury consider their verdict," the King said, for about the twentieth time that day.
 "No, no!" said the Queen. "Sentence first—verdict afterward."
 "Stuff and nonsense!" said Alice loudly. "The idea of having the sentence first!"
 "Hold your tongue!" said the Queen, turning purple.
 "I won't!" said Alice.
 "Off with her head!" the Queen shouted at the top of her voice.



In [last month's newsletter](#) we queried whether the Premier, Jay Weatherill and Minister John Rau were breaking the law, or simply ignoring the law by failing to get a legally-required report on how the old RAH site could be turned back to Park Lands.

23—Steps regarding change in intended use of land

- (1) If land within the Adelaide Park Lands occupied by the Crown or a State authority is no longer required for any of its existing uses, the Minister must ensure that a report concerning the State Government's position on the future use and status of the land is prepared within the prescribed period.
- (2) A report under subsection (1) must include information on the condition of the land and on the action (if any) that would be required in order to make the land suitable for public use as park lands.

[Subscribe](#)[Past Issues](#)

In response to Minister John Rau has kindly explained that he won't be getting such a report, until the Government has decided what it will do with the site.

[Translate](#) ▾[RSS](#) 

Of course! How could we have been so foolish? Why would you want a report to tell you something that you don't want to hear, if you have already decided that you won't do what the report will tell you?

It seems that to Minister Rau, the purpose of section 23 is to produce a report that he will not need to even read. By the time he gets it, the decision will already have been made and the section 23 report will be entirely useless.

"Sentence first - verdict afterwards!"

You could write to tell him what you think of this, but maybe wait to see if he's re-elected this Saturday.



Share



Tweet



Forward

PARK LANDS VIDEO OF THE MONTH



If you've missed any of our earlier videos (of Parks 1 through to 9) you can catch up at any time at [our YouTube channel](#).

There's a link to our YouTube channel on the home page of our website:

www.adelaide-parklands.asn.au

The video of the month series will take a break next month, but will be back in the May newsletter with a slightly longer video, covering one of the largest parts of the Park Lands; [Park 11](#).



Share



Tweet



Forward

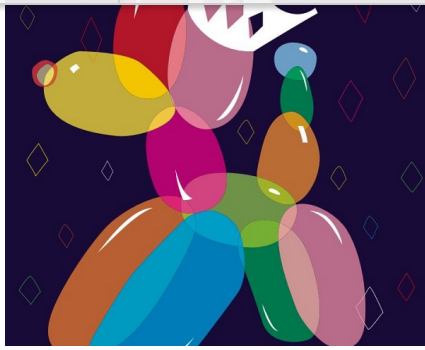
WHAT'S ON IN THE PARK LANDS OVER THE NEXT FEW WEEKS

There are always events scheduled in the Park Lands, many of them free, and there are always opportunities to explore the Park Lands on your own, or with friends or family. Take a look at [our picture gallery](#) for hints about interesting spots to visit. This month's featured opportunities are:

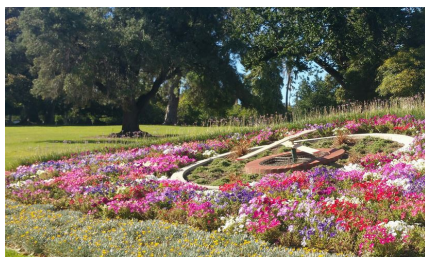
[Adelaide Fringe](#) last few days (ending 18 March).

There are multiple Fringe venues in the Park Lands, including:

- The [Garden of Unearthly Delights](#) in Rundle Park / Kadlitpina (Park 13)
- [Gluttony](#) in Rymill Park / Murlawirrapurka (Park 14)
- [Royal Croquet Club](#) at Pinky Flat in Tarntanya Wama (Park 26)
- [Adelaide Botanic Gardens](#) (Park 11)

[Subscribe](#)[Past Issues](#)Peruse the whole Fringe program and venues here: <https://www.adelaidefringe.com.au>[Translate](#) ▾[RSS](#) 📡

[Croquet Interstate Carnival](#) At Croquet SA Headquarters, Carriageway Park / Tuthangga (Park 17) near the corner of Hutt Rd and Glen Osmond Rd, and other venues. Three separate events over 12 days: March 14 to March 25. Visitors/spectators welcome: <https://www.croquetsa.com.au/2018-eire-cup-carnival/>



[Guided walk through Brougham Gardens and Palmer Gardens](#) / (Parks 28 and 29). Sunday March 18th - 9.30am to 11.00am. Join APPA Park Ambassador Valdis Dunis, for a stroll through the two formal gardens of North Adelaide. Along with the rose gardens and other formal plantings, the built heritage that surrounds these two gardens is also impressive - including the tower of the Brougham Place Uniting Church. Gold coin donation. (Free for APPA members). Meet behind the floral clock (pictured). Children and dogs most welcome.



[Artisan produce week on the Pontoon](#) 12.30pm - 1.00am, Frid, Sat, Sun 13-15 April and 20-22 April. River pontoon, Elder Park, Tarntanya Wama (Park 26). Free entry. Celebrating artisan craft beer, wine, spirits and food, all available for purchase. South Australian brewers, winemakers and producers will present Q&A sessions throughout the program.



[Free community Yoga](#) - Every Friday, 12.30pm - 1.15pm. Pinky Flat, War Memorial Drive, Tarntanya Wama (Park 26). Contact: Millie Walker Phone 0409 928 417 mwfit500@gmail.com



[Kids TRyathlon](#) - Sunday 8 April from 7.30am. Swim, ride and run at Denise Norton Park / Pardipardinyilla (Park 2) based at the Adelaide Aquatic Centre. Suitable for ages 7 to 15 - distances vary according to age group. Register by 1 April. Click the picture to learn more.

[April School Holidays in the Botanic Gardens](#) - from Monday 16 April. Activities for 5 to 13-year-olds to promote fun, hands-on learning about plants, people and the environment. Book early - spots will sell out! Kids can:

Subscribe

Past Issues

Translate ▾

RSS



- enjoy a singing musical adventure through the rainforest at Adelaide Botanic Garden.
- create cute garden critters out of curious botanic bits, and
- learn about Aboriginal culture and plant use.

Share
 Tweet
 Forward

WINSOME, LOSE SOME



These are just some of the recent changes to Gladys Elphick Park / Narnungga (Park 25) off Port Rd, opposite the new Royal Adelaide Hospital. One building has gone but a new one has been erected. SA Cricket Association buildings now have a smaller footprint, but the height & scale is increased and there is more bitumen and associated car parking.

A win for the Park Lands? You be the judge.

The old flat-roofed building, now demolished, has been removed from our photo album of Park Lands losses. See the ever-growing list (currently featuring 134 losses) here: <https://flic.kr/s/aHskbwKXQp>

Share
 Tweet
 Forward

LAST WEEKS FOR ART PRIZE ENTRIES

The deadline is fast approaching for entries in the 2018 Park Lands Art Prize.

Winners will share in \$33,000 Prize Money

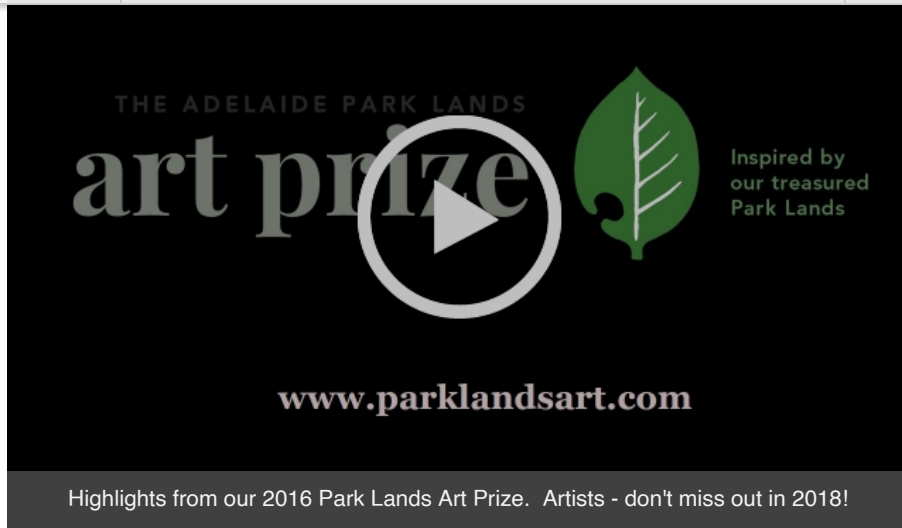
- \$20,000 First Prize
- \$2,000 APPA Young Artist Prize
- 10 x \$1,000 Highly Commended Prizes
- \$1,000 Royal Adelaide Show People's Choice Prize

Get your entry in by the closing date: Tuesday 1 May 2018.

Subscribe

Past Issues

Translate ▾

RSS 


THE ADELAIDE PARK LANDS
art prize
Inspired by
our treasured
Park Lands

www.parklandsart.com

Highlights from our 2016 Park Lands Art Prize. Artists - don't miss out in 2018!

For queries please call: Maggie Fletcher 0417 896 779 or Hamish Ramsay 0488 084 127
For more information about the Art Prize, go to www.parklandsart.com



Share



Tweet



Forward

SAVE THE DATE - APPA'S AGM - SUNDAY 29 APRIL



Save the date. APPA's Annual General Meeting will be held on Sunday 29 April. As in recent years, the AGM will be held in the Don Pyatt room in the Norwood Town Hall, commencing at 9.30am.

Guest speaker will be Greens leader, the Hon. Mark Parnell, MLC on the topic: "What prospects for improved Park Lands protection in the new Parliament?"

More details in next month's *e-Gazette*.

QINGDAO ROSE GARDEN AND THE 'SONG OF THE WIND'



On Sunday 22 February, the Lord Mayor Martin Haese officially opened the Qing Dao rose garden in Veale Gardens, Veale Pak / Walyu Yarta (Park 21). The rose garden has been planted out three years in advance of the World Federation of Rose Societies Convention which will be held in Adelaide in 2021.

Subscribe

Past Issues

Translate ▾

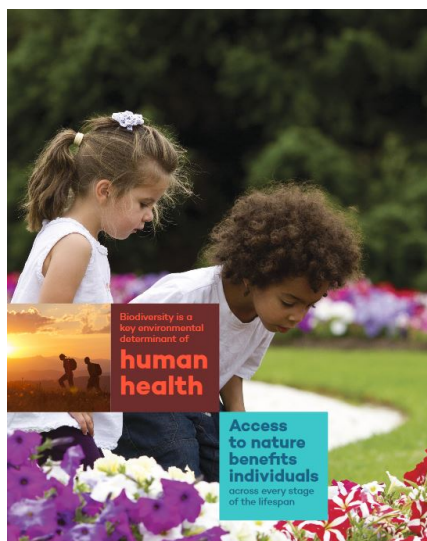
RSS 📡



The garden and the nearby statute "Song of the Wind" celebrates the relationship between the City of Adelaide and the City of Qingdao.

Share Tweet Forward

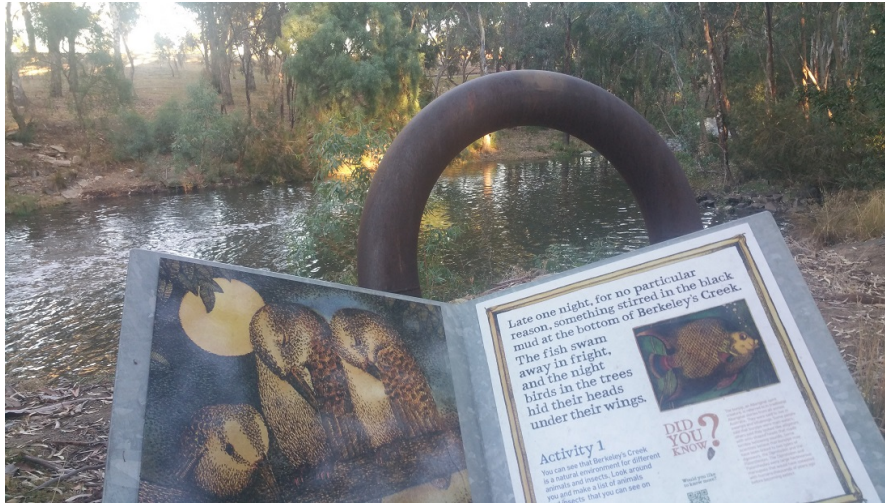
DIDYOUKNOW?



- The restorative effects of exposure to the natural environment enhances the ability to cope with and recover from stress, illness and injury.
- Research indicates clear links between time spent outdoors and increased work productivity and creativity.
- Parks and green space can be a highly cost-effective contributor to preventing or treating ill-health.
- In urban areas, nature and parks foster social connections which are vital to community cohesion and significantly contribute to social well-being.

Read more in the [March 2018 newsletter of World Urban Parks](#)

PHOTOS OF THE DAY - RECENT HIGHLIGHTS



From the top:

- The first stop on the Bunyip Trail in J.E. Brown Park (Park 27A) about 500 metres downriver from the Bonython Park kiosk.
- Jogging and cycling at sunrise on the River Torrens linear trail in Mistletoe Park / Tainmuntilla (part of Park 11) just north of Botanic Park
- One of the SA Police "greys" amongst the 1860's olive trees in the newly-renamed Kate Cocks Park (part of Park 27) near the Bonython Park playground and circular boating pond.
- Statue of women's suffrage pioneer Catherine Helen Spence (and a supporter?) in Light Square / Wauwi. This was our 'Photo of the Day' on International Women's Day, 8 March.
- Yoga and stretching in Peppermint Park / Wita Wirra (Park 18) off South Terrace between Hutt Rd and Glen Osmond Rd

The Park Lands 'photo of the day' series has been running since May 2014, and the collection of Park Lands photos gathered over almost four years, now numbers well over 1,400. We maintain (and gradually grow) more than 40 separate albums: one for each one of our 30 numbered Parks, six squares (and several albums for 'Alienations'). To browse the photos follow the link below to '[Our photos on Flickr](#)'.



APPA on Facebook



@adelparklands






APPA website



Our photos on Flickr

Subscribe	Past Issues		Translate ▼	RSS 
------------------	--------------------	--	--------------------	---

 Share  Tweet  Forward

Copyright © Adelaide Park Lands Preservation Association, Inc. [2015] All rights reserved.

[unsubscribe from this list](#) [update subscription preferences](#)

