

e-Gazette No. 039 - June, 2018. If this email doesn't look right (e.g. if there are no pictures) then:

[View this email in your browser](#)

## ART PRIZE – FINALISTS UNVEILED



## Other stories....

- [PLANS FOR TWO-STOREY "CLASSROOM" BUILDING IN PARK 20](#)
- [COUNTDOWN TO ART PRIZE OPENING](#)
- [TOTAL PARK LANDS LOSSES QUANTIFIED](#)
- [WORLD HERITAGE BID GETS A BOOST](#)
- [EXPRESSIONS OF INTEREST FOR LICENSING PARK 27B](#)
- [VIDEO OF THE MONTH - RED GUM PARK / KARRAWIRRA \(Park 12\)](#)
- [WHAT'S ON IN THE PARK LANDS OVER THE NEXT FEW WEEKS](#)
- [ART GALLERY'S PARK 11 DREAMING](#)
- [MEMBERSHIP RENEWALS GOING OUT ON 30 JUNE](#)
- [BRIEFLY, IN OTHER PARK LANDS NEWS](#)
- [PHOTOS OF THE DAY - RECENT HIGHLIGHTS](#)

### PLANS FOR TWO-STOREY "CLASSROOM" BUILDING IN PARK 20



Hardly a month goes by when APPA isn't forced to respond to yet another attempt to alienate Park Lands for private purposes.

This month we are yet again, reluctantly exposing a massive attempted land grab, this time by

Pulteney Grammar School over a large swathe of Blue Gum Park / Kurangga (Park 20).  
The school is telling its community what it plans to expand its campus "the school is telling its community what it plans to expand its campus"

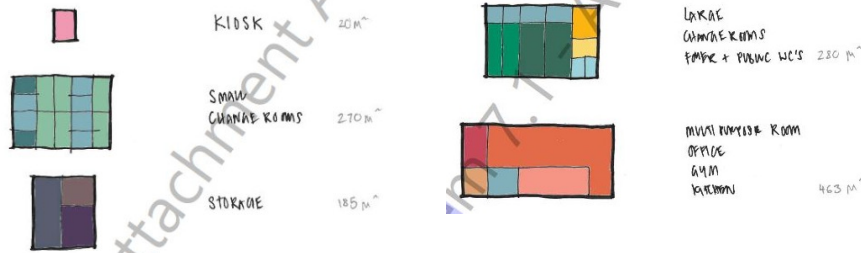
Terrace."

This is not an exaggeration of its intentions. Concept plans [to be considered next Thursday \(21 June\) by the Adelaide Park Lands Authority](#), actually envisage classrooms on the second storey of a massive proposed new building in Blue Gum Park / Kurangga (Park 20).

[The plan](#) envisages demolishing several existing buildings with a combined footprint of 572 square metres, and erecting two new buildings with a footprint of 967m<sup>2</sup>.

With the inclusion of a second storey to one of the buildings, the proposed total floor space on Park Lands would be a 1,430 metres, an increase of 250% over the status quo.

The school is planning to include several features of a private nature, such as classrooms (alternatively described as a "multi-purpose" space) an office, a gym, and extended storage.



Level 1

- Kiosk (20 square metres)
- Small change rooms (270 square metres)
- Storage (185 square metres)
- Large change rooms and public WC (280 square metres)

Level 2

- Multi-purpose room (also described as "classrooms") office, gym, kitchen (480 square metres)

Pulteney Grammar has given no explanation as to why any of the essentially private facilities (including the entire second floor) should be on public Park Lands rather than immediately across the road on its South Terrace campus.

This is the site that Pulteney Grammar [is publicly proclaiming](#) that it wants:



There is a collection of several small change facilities and storage sheds in this area. See the pics below. The existing facilities are used not only by Pulteney Grammar, but also by the Adelaide Harriers Athletics Club, and for part of the year by Adelaide Eagles Little Athletics.

We have previously drawn attention to the poor state of these facilities and would welcome their replacement or refurbishment. The Pulteney Grammar proposal would allow that to happen and we would of course endorse that.

But the key question for this or any other Park Lands site, is **public** (not private) benefit. This must NOT become an opportunity for Pulteney Grammar to "expand its campus" into Park Lands.

Park Lands are not development sites for private users to take over.

Pulteney Grammar and the Adelaide Harriers Athletics Club, recently received approval to keep using the Park Lands as they have done for 100 years or so. Part of their successful bid was a commitment to improving the facilities there. Clearly, improved *public* facilities, to allow the *public* to enjoy Park Lands, would be

Subscribe

Past Issues

Translate

RSS

welcomed.  
However the school must not be permitted to "expand its campus" across South Terrace at the expense of current and future generations



ATHLETICS CONTAINERS



MAINTENANCE SHED



ATHLETICS CHANGEROOM



SOCCER CHANGEROOM



SHED



FOOTY CHANGEROOM

What is most concerning is that the concept plans above have been prepared in co-operation with staff from the City Council, and the Council administration is recommending to the Park Lands Authority that this concept plan be endorsed.

APPA has sought permission for a deputation to the Park Lands Authority, next Thursday, to propose that these plans need scaling back to a much more modest size, include removing facilities of a private nature, such as classrooms, offices etc.

Please come to the Authority's meeting from 5.30pm next Thursday at the Town Hall to support APPA's submission.



Share



Tweet



Forward

### COUNTDOWN TO ART PRIZE OPENING

Members of the public will be able to see a stunning collection of Park Lands art from Thursday 5 July at the Festival Centre.

The third biennial Adelaide Park Lands Art Prize will be officially opened on the evening before: Wednesday 4th July by the Minister for Child Protection, and Member for Adelaide, Rachel Sanderson, MP.

\$33,000 in prizes will then be announced by the Lord Mayor the Hon. Martin Haese.



APPA received 186 entries for the 2018 Art Prize. The judges remarked on the high quality of most of this year's entries and found it hard to whittle down the list to a select group of finalists.

In the end, 74 artworks (from 71 entrants) were selected for display.

The exhibition of all finalists will be open to the public in the Adelaide Festival Centre, Festival Theatre Foyer Gallery foyer from Thursday 5 July until Sunday 26 August.

Visit the exhibition and place your vote for the Royal Adelaide Show's People's Choice Prize to be announced on 25 August.



The four artworks reproduced above are among the 74 finalists. From the top:

- Susan Webb - Linear History
- Leah Jeffries - Botanic Park Pines
- Laima Guscia - Intertwined, and
- Andrea Wyatt - The Tree of Life - Parklands Tree

APPA hopes that the Art Prize exhibition will focus attention on our world-unique heritage and encourage greater respect and appreciation of the Adelaide Park Lands.

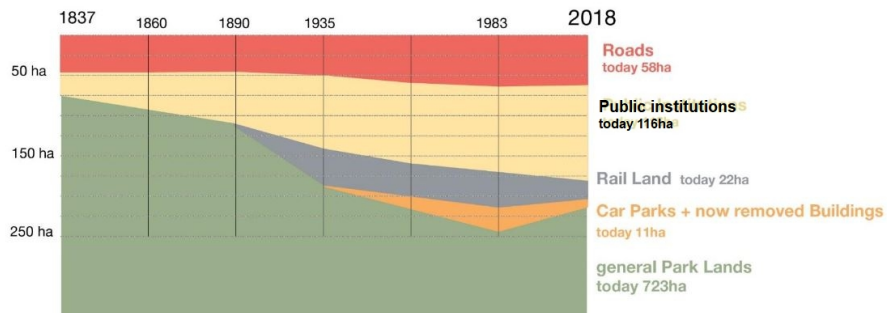
 Share
  Tweet
  Forward

### TOTAL PARK LANDS LOSSES QUANTIFIED

Figures to be presented next Thursday to the Adelaide Park Lands Authority purport to show that the rate of Park Lands losses over recent years has slowed, or alternatively reversed from a previously-alarming rapid decline.

However, as with all statistics, they can be misleading, depending on what is included and what is omitted from the definition of Park losses.

The graph below shows an improvement since 1983, when the City Council started reducing the amount of land dedicated to car parking.

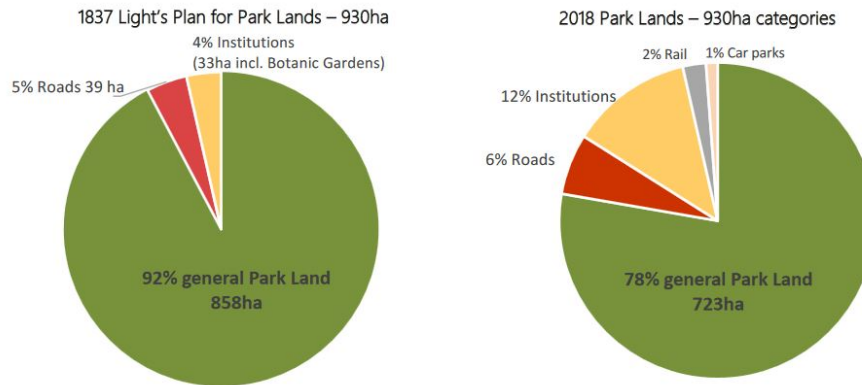


However the graph unfortunately omits the impact of:

- the New Royal Adelaide Hospital (with more than 2,200 car parks) on Park 27.
- Adelaide Oval's redevelopment in Park 26;

The graph also misleadingly includes, within its definition of "general Park Lands" all "sporting facilities, restaurants and kiosks". As we are chronicling with our [weekly photos of Park Lands losses](#), there are dozens of these locked and private facilities scattered throughout the Park Lands and in recent years they've been getting bigger.

This month's lead story about the proposal by Pulteney Grammar is the latest example of something that wouldn't even be recognised by these figures as a Park Lands loss.



Nevertheless the figures above do reinforce the historical reality of massive Park Lands losses over generations.

Even without adjusting for the omissions outlined above, the historical record shows that over Adelaide's history of 181 years, Park Lands totalling 135 hectares have been lost. That is an average of 0.745 hectares, or 7,458 square metres, per year.

We had [previously estimated](#) the historical rate of Park Lands loss as equivalent to 7.6 tennis courts per year. It now seems that we were far too conservative.

A tennis court's playing surface is 261 square metres so the rate of loss over time is at least equivalent to an average of more than 28 tennis courts per year! (i.e. 7,458 divided by 261)



Share



Tweet



Forward

## WORLD HERITAGE BUDGETS A BOOST

APPA's long-held objective to secure World Heritage listing of the Adelaide Park Lands has secured two significant supporters.

The push has a supporter within State Cabinet. The Minister for Child Protection, Rachel Sanderson, MP, told APPA's Annual General Meeting on 29 April 2018 that she would support such a push.

Ms Sanderson's support led to discussion at the 24 May meeting of the Adelaide Park Lands Authority, led by APPA's nominee, Stephanie Johnston. At Ms Johnston's urging the Authority resolved:

*That given the Member for Adelaide's recent announcement of support for World Heritage Listing of the Adelaide Park Lands and the supportive position in the Adelaide Park Lands Management Strategy for securing commitment and developing a case for listing of the Adelaide Park Lands and City Layout, the Board of the Adelaide Park Lands Authority establishes a committee to explore the feasibility of, and possible options for mounting a World Heritage nomination and to develop support for the project.*

[Subscribe](#)[Past Issues](#)[Translate](#) ▼[RSS](#) 📡

Left: Rachel Sanderson, MP and right: Stephanie Johnston of the Park Lands Authority

### EXPRESSIONS OF INTEREST FOR LICENSING PARK 27B



Consistent with the process undertaken in other Parks over the past two years, the City Council has [called for expressions of interest](#) for:

- licensing the playing fields; and
- leasing a new building to replace the existing shed;

in Mary Lee Park (Park 27B).

[Subscribe](#)[Past Issues](#)[Translate](#) ▼[RSS](#) 📡

The Council envisages that "the new building will incorporate public toilets and provide opportunities for community use outside of organised sporting use."



The current building (above) is used by the West Adelaide Soccer club, which is likely to bid for the ongoing licensing of the playing fields, and the opportunity to replace this building.

The [Expression of Interest process](#) expires at 5pm on Wednesday 20 June.

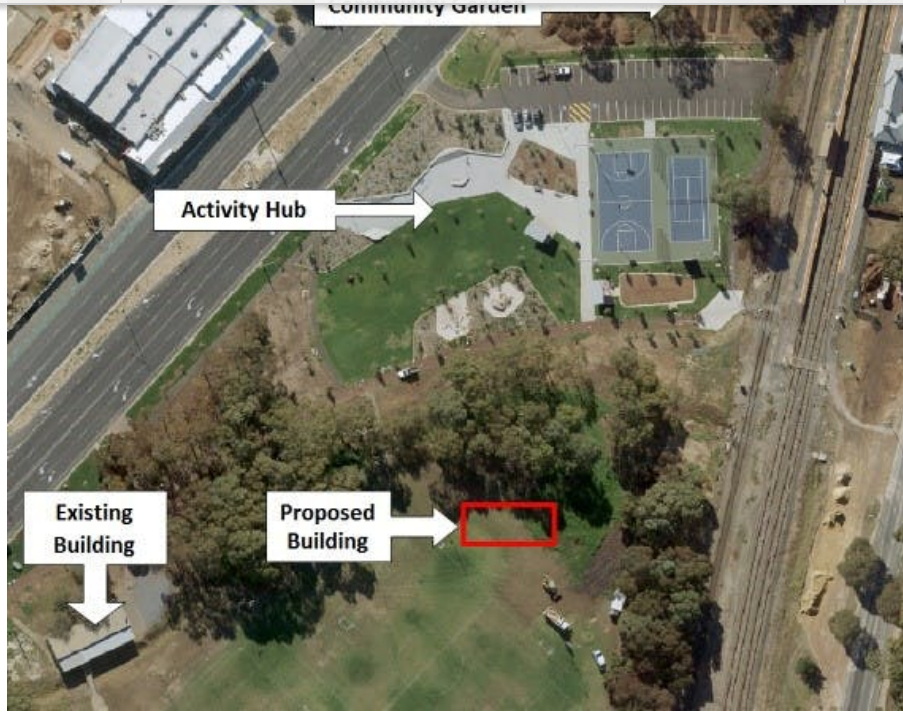
For more details, see: <https://yoursay.cityofadelaide.com.au/EOI-Park27b>

Subscribe

Past Issues

Translate ▾

RSS 📡



 Share
  Tweet
  Forward

VIDEO OF THE MONTH - RED GUM PARK / KARRAWIRRA (Park 12)



We're gradually building, in numerical order, a video guide to each part of the Adelaide Park Lands.

The next video, due for release in the July newsletter, will be **Rundle Park / Kadlitpina (Park 13)**.

Catch up on any of our earlier Park videos at our YouTube channel:  
[https://www.youtube.com/channel/UCBBBQLY6as\\_sQv0BoQm69Rw/videos](https://www.youtube.com/channel/UCBBBQLY6as_sQv0BoQm69Rw/videos)

 Share
  Tweet
  Forward



[Subscribe](#)[Past Issues](#)

WHAT'S ON IN THE PARK LANDS OVER THE NEXT FEW WEEKS

[Translate](#) ▾[RSS](#) 📡

There are always events scheduled in the Park Lands, many of them free, and there are always opportunities to explore the Park Lands on your own, or with friends or family. Take a look at [our picture gallery](#) for hints about interesting spots to visit. This month's featured opportunities are:



[Yoga Day Festival - Immersion in the Park](#) - Sunday 24 June 2pm to 4pm Wellington Square. **Free!** Celebrating all things yoga. Featuring a fun and flowing yoga asana class, yoga mantra dance, deep relaxation, yoga breathing, live sacred music meditation, a yoga wisdom talk to inspire and peace meditation. Warm chai and blissballs will be served. Please bring a yoga mat. Click the pic for details.



[Skating at Victoria Square](#) - every day and evening, 29 June 29 to 22 July. Children from \$18, Adults from \$24. For those who need a little assistance on the ice, there is a world-first "Kanga skate aid" keeping skaters balanced. Aloongside the rink: you'll find drides, ice slides, a jumping castlem ferris wheel, and food and drink options Click the pic for more details.



[River walk walking group](#). Meet weekly at the Elder Park rotunda.

- **Group:** 4 members
- **Speed:** Medium pace
- **Duration:** 45-60 min
- **Dog Friendly:** Yes
- **Pram Friendly:** No

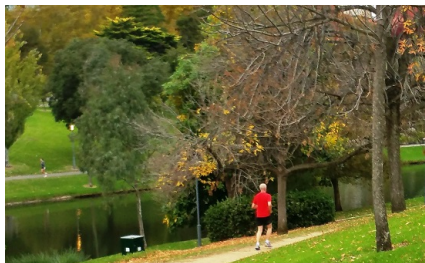
**Walk Organiser: Anushka 0432056 747**



[Wild Pop-Up Playgroup](#). Every Saturday, Lefevre Park / Nantu Wama (Park 6) - 9:30am - 11:00am. Resources provided for children's activities (different each week) that may include mud painting, charcoal drawing, rock crushing, teepee (wadli) building, bug finding, and clay creating, with trees to climb, and spaces for imagination. \$16 + booking fee. Designed for children 5 & under, older siblings can join in too, and siblings under 6 months free. Click the pic for details.



[Women's Run In the Park](#) - Sunday mornings: 8 July, 12 August and 9 September. Victoria Park / Pakapakanthi (Park 16) corner of South Terrace and East Terrace. Meet at 8:30am to start at 9am. A relaxed, timed run over either 3 km or 5km in the style of "parkrun" where you can test your fitness or progress. Free, but registration for each run is encouraged, so organisers can be sufficiently prepared. Click the pic for details.



[Guided walk through Red Gum Park / Karrowirra \(Park 12\)](#). Sun 8 July 2.00pm to 3.45pm. Gold coin donation. (Free for APPA members). Meet at the traffic lights on Victoria Drive, at the southern end of the University footbridge over the Torrens. Details here: <https://www.facebook.com/events/630280660653206/>

[Subscribe](#)[Past Issues](#)

Share



Tweet



Forward

[Translate](#)[RSS](#)

## ART GALLERY'S PARK 11 DREAMING



The Art Gallery of SA received wide publicity a few weeks ago when it announced the winner of its competition to design a new building that the Gallery wants to erect on the Park 11 site of the former Royal Adelaide Hospital.

The winning design (above) by Diller Scofidio + Renfro and Woods Bagot is impressive. However, as [we explained in last month's newsletter](#), all the design teams who worked on this competition were unfortunately asked the wrong question.

There is no commitment from the present State Government to build this, or anything like it. Read more here: <https://indaily.com.au/arts-and-culture/2018/06/06/adelaide-contemporary-fades-interstate-rivals-take-off/>

Unfortunately the State Government is not committed to returning any part of the former RAH site to Park Lands.

The Government has not yet revised its pre-election plan to allow construction of a multi-storey private hotel on the former RAH site.

Read more about the old RAH site here: [www.adelaide-parklands.asn.au/current-issues](http://www.adelaide-parklands.asn.au/current-issues)

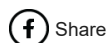


If you haven't already, then please sign the petition:

<https://www.change.org/p/steven-marshall-mp-keep-public-land-public>

and/or TAKE OTHER ACTION:

[www.adelaide-parklands.asn.au/take-action](http://www.adelaide-parklands.asn.au/take-action)



Share



Tweet

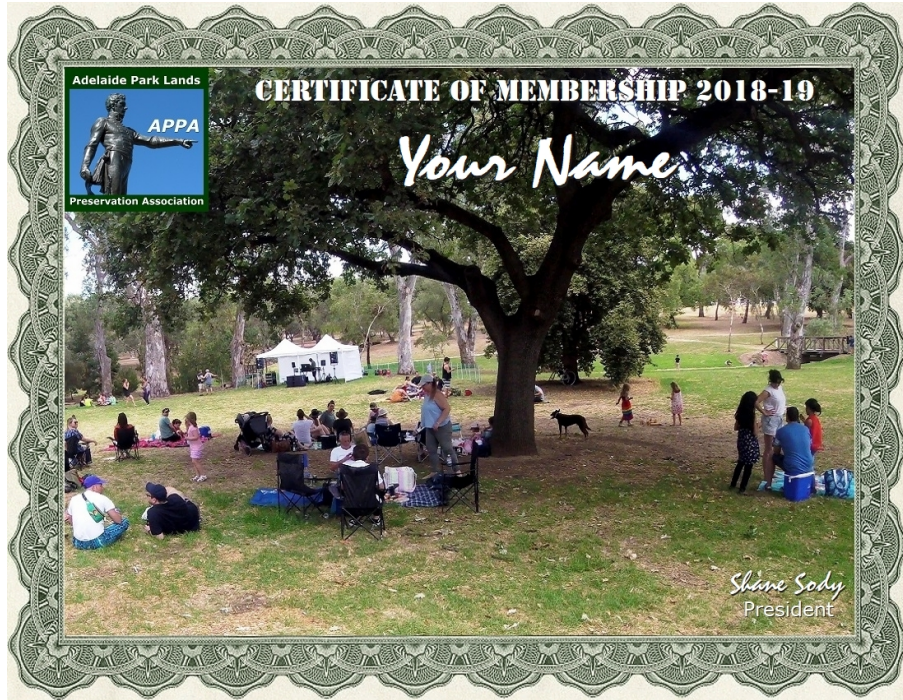


Forward

### MEMBERSHIP RENEWALS GOING OUT ON 30 JUNE

if you are a financial member of APPA you will get a separate emailed invoice this year inviting you to renew your membership from 1 July. Our website has been updated this year allowing membership payments to be made by secure credit card facility.

You can wait to receive your invoice, or alternatively visit [the membership page](#) at any time to renew without an invoice.



Share Tweet Forward

As a financial member of APPA, you get:

- the priceless satisfaction of supporting APPA's work;
- free participation in our [monthly guided Park Lands walks](#);
- eligibility to become a Park Ambassador and lead an annual [guided walk through one Park](#);
- the responsibility to help guide APPA's activities through the Annual General meeting; and
- a printable PDF membership certificate (see above for the new 2018-19 certificate).

[www.adelaide-parklands.asn.au/membership](http://www.adelaide-parklands.asn.au/membership)

### BRIEFLY, IN OTHER PARK LANDS NEWS



**Skate Park.** During the State election campaign earlier this year, the outgoing Labor government promised to build a permanent skate park in Gladys Elphick Park / Narnugga (Park 25) off West Terrace. The new Liberal State Government has decided not to match that commitment. It's ["not a priority" for the new Government](#). Skate parks need lots of concrete, so APPA would be happy to see a Skate Park built somewhere other than Park Lands.

**Bee BnB.** Bonython Park / Tulya Wardli (Park 27) is just one of many locations around Adelaide where efforts are

Subscribe

Past Issues

under way to encourage breeding and distribution of native bees.

Translate ▾

RSS



This "bee BnB" is located near the Bonython Park Adventure playground at the rear of the old Adelaide Gaol. Click the photo for more information.



**Adelaide on the Parks world stage.**

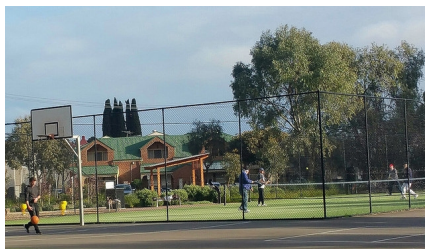
The International Parks and Leisure Congress is being held this year in Australia.

Representatives from both APPA (former President Jim Daly) and from the Adelaide Park Lands Authority will attend the Congress at the MCG (Melbourne Cricket Ground) from 14 to 17 October 2018. Mr Daly's presentation "Green Space in Cities: Under Threat" is listed as a presentation of the University of Adelaide.

Click the pic for the full program.



**Tennis SA Park Lands secrecy.** On 24 May, the Park Lands Authority considered, in secret, an item called "Tennis SA Landlord consent". The public was excluded from the discussion on the grounds of "commercial-in-confidence" and whatever decision was made is marked to remain confidential until 2025. "Commercial-in-confidence" use of the Park Lands hardly seems consistent with the legal description of the Park Lands as "a world-class asset to be preserved as an urban park for the benefit of present and future generations"



**Park 9 residents group looking to broaden its membership**

As we foreshadowed last month, locals who live in the vicinity of Bunday's Paddock / Tidlangga (Park 9) have decided to form an incorporated body to advocate for their area. Rather than make "Park 9" the sole focus they have decided to seek incorporation under the broader name "Lower North Adelaide Residents Association." You can contact them on this email: [park9@internode.on.net](mailto:park9@internode.on.net)

**PHOTOS OF THE DAY - RECENT HIGHLIGHTS**

Subscribe

Past Issues

Translate ▾

RSS 📡



From the top:

- a) Adelaide University playing fields in Red Gum Park / Karrawirra (Park 12)
- b) Boys on scooters in King Rodney Park / Ityamai-itpina (Park 15) off Bartels Rd
- c) Playground in Rymill Park / Murlawirrapurka (Park 14)
- d) BMX cyclist in Blue Gum Park / Kurangga (Park 20) off Unley Road
- e) Walking the dogs in Carriageway Park / Tuthangga (Park 17)

The Park Lands 'photo of the day' series has been running since May 2014, and the collection of Park Lands photos gathered over four years now numbers over 1,500. We maintain (and gradually grow) more than 40 separate albums: one for each one of our 30 numbered Parks, six squares (and several albums for 'Alienations'). To browse the photos follow the link below to 'Our photos on Flickr'.



APPA on Facebook

@adelparklands

APPA website

Our photos on Flickr

YouTube



Share

Tweet

Forward

Copyright © Adelaide Park Lands Preservation Association, Inc. [2015] All rights reserved.

**Subscribe**

**Past Issues**

[unsubscribe from this list](#) [update subscription preferences](#)

**Translate** ▼

**RSS** 

