

e-Gazette No. 045 - December, 2018. If this email doesn't look right
(e.g. if there are no pictures) then:

[View this email in your browser](#)

ASVULTURES CIRCLE - HERITAGE LISTING MOVES AHEAD



In this newsletter:

- [GLIMMERS OF HOPE - SWELLING COMMUNITY SUPPORT](#)
- [COUNCIL TAKES ON STATE GOVERNMENT OVER OVAL HOTEL](#)
- [OVAL HOTEL - WHAT CAN YOU DO?](#)
- [HERITAGE LISTING FINALLY MOVES AHEAD](#)
- [VIDEO OF THE MONTH - CARRIAGEWAY PARK / TUTHANGGA \(Park 17\)](#)
- [LAST SKERRICK OF NORTHERN PARK TARGETED FOR REMOVAL](#)
- [WHAT'S ON IN THE PARK LANDS](#)
- [CROWS CONFIRM INTEREST IN A PARK LANDS MOVE](#)
- [2018 - THE WORST YEAR IN PARK LANDS HISTORY?](#)
- [FIRST PLAYGROUND TURNS 100](#)
- [BRIEFLY, IN OTHER PARK LANDS NEWS](#)
- [PHOTOS OF THE DAY - RECENT HIGHLIGHTS](#)

GLIMMERS OF HOPE - SWELLING COMMUNITY SUPPORT

[Subscribe](#)[Past Issues](#)[Translate](#) ▼[RSS](#) 📡

The past month has been one of the most challenging in memory for the Adelaide Park Lands Preservation Association.

Since the previous newsletter only a month ago, there have been a series of scares, as vultures seem to gather for impending raids on the world-unique Adelaide Park Lands.

The following stories in this newsletter outline the major developments of recent days.

- A State Government-sponsored private hotel to be attached to the Adelaide Oval in [Park 26](#);
- a new Women's and Children's Hospital to be built in what little remains of Park Lands next to the new Royal Adelaide Hospital in [Park 27](#);
- An admission by the Adelaide Crows that the club is exploring possible sites in the Park Lands to relocate their training and administration facilities;
- The State Government finally dashing hopes that any part of the old Royal Adelaide Hospital might be returned to Park Lands by announcing that the Australian Space Agency would be installed there in [Park 11](#).

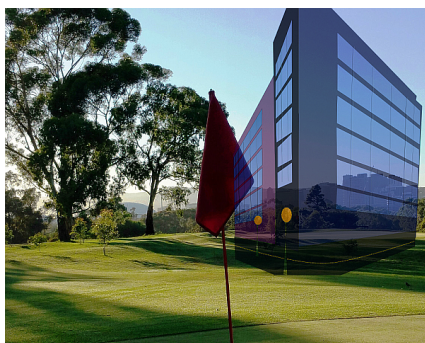
To this list can be added previously-foreshadowed risks to:



Possum Park / Pirltawardli (Park 1) from a proposed new multi-sport stadium.

(See our [October newsletter story here.](#))

...and...



....a still-secret City Council report that suggests a multi-million dollar golf course function centre in the same Park.

(See our [September newsletter story here.](#))

Yet despite these circling vultures, preparing to tear strips off the Park Lands, three glimmers of hope have also emerged in recent days.

- On Tuesday 11 December, a rowdy public gallery at the Adelaide City Council cheered and applauded as the new City Council resolved unanimously to urge the State Government to abandon its plans for a hotel in [Park 26](#);
- On midday on Saturday 5th January, you are invited to a "black armband silent protest" at Adelaide Oval; and

See the stories below.



COUNCIL TAKES ON STATE GOVERNMENT OVER OVAL HOTEL

If you paved your back yard, it's still a back yard, isn't it? What about if you rented out your property, with a paved back yard? Isn't it still a back yard? It doesn't stop being a back yard, simply because it's been paved or leased.

The State Government claims this area outside Adelaide Oval, featuring a statue of Malcolm Blight, is not Park Lands, simply because it's been paved and leased.



But the proposed Government-backed Adelaide Oval hotel would take away this paved section of Tarntanya Wama (Park 26) for the benefit of the private stadium operators.

If the State Government gets its way, this paved public land would disappear under a new private hotel. A \$42 million dollar loan, guaranteed by taxpayers, would remove forever this area of paved public Park Lands. That's what the State Government wants.



Artist's impression of the proposed hotel on the outside of the Adelaide Oval, taking over part of the paved concourse. Luxury Park Lands overview for the wealthy? Or Park Lands for the public?

The City Council is the landlord of the Oval but a law passed in 2011 has removed the Council's decision-making powers over the "core leased area" of the stadium.

Subscribe

Past Issues

Translate

RSS

Nevertheless on Tuesday 11 December, the Adelaide City Council voted unanimously to tell the State Government that it should re-think its hotel proposal. In the applause of the public gallery, the Council unanimously resolved that:

“Council strongly opposes the Adelaide Oval Stadium Management Authority plan to build a hotel on the Park Lands and asks the Lord Mayor to immediately write to the Premier and the members of State Cabinet setting out Council’s position on the development while also foreshadowing the inclusion of the matter on the agenda of the next meeting of the Capital City Committee.”

Even Councillors who are known Liberal party supporters joined in the chorus criticising the State Government’s hotel plan, for a range of different reasons.

Earlier, on 5 December 2018, the Legislative Council (upper house of State Parliament) set up a [Select Committee into the “Redevelopment of Adelaide Oval”](#). The Committee’s [terms of reference are very broad](#) and it’s seeking public submissions.



These six members of the Upper House (two Labor, one Liberal, and one each Conservative, SA Best and Advance SA) are holding an inquiry into the stadium’s plans.

Find out more at www.adelaide-parklands.asn.au/oval-hotel

Share Tweet Forward

OVALHOTEL - WHAT CANYOU DO?

As the first step in what is expected to be a long-running battle, APPA is co-ordinating a 'black armband' silent protest at the site of the proposed hotel.

On Saturday 5 January, at midday, join us at the Malcolm Blight statue on the Adelaide Oval concourse. Wear black.



Please wear black - either an armband, or a black T-shirt or similar.

Footballers wear a black armband to pay respect or remembrance for someone who's
Government respect for the Adelaide Park Lands. (If you doubt that, see our
catalogue of [what happened to Park Lands in 2018](#)).



Very little of your time will be required. The aim is to capture a photo of as many people as possible with black armbands (or black clothing) . We'll take the photo as soon as possible after midday, and send it to the Premier.

A crowd wearing black arm bands will be a powerful symbol to the State Government and will reinforce the message that they've already received from the City Council. The Park Lands are not for pubs.



Whether we have two, or two thousand people there, this will not be the end of the campaign. Given the powerful vested interests that are pushing this hotel plan, we expect it to be a long, drawn-out fight in the battleground of public opinion.

Share Tweet Forward

HERITAGE LISTING FINALLY MOVES AHEAD



The Park Lands received National Heritage Listing in 2008 so it was a no-brainer (back in 2009) that we would ask the State Heritage Council to consider whether SA should follow the Federal Government's lead and declare that the Park Lands are worthy of "heritage" recognition.

State (and World) Heritage listing of the Park Lands is among APPA's key 'Objectives' in [our Constitution](#).

We're not sure why it took so long, but a State "heritage assessment" of the Adelaide Park Lands and City Squares finally began in April 2017. A prolonged period of public consultation occurred from June to September 2017.

The consultant firm that was appointed to conduct the official "assessment" of the Park Lands was also acting for clients who (in 2017) were seeking approval to build major sports facilities on the Park Lands. Despite our concerns about a possible conflict of interest, the consultant continued in the role and delivered its report to the Heritage Council in mid-2018.

Now, the State Heritage Council has finally made a determination on the matter. On 6 December, the State Heritage Council:

"Agreed to write to Minister for Environment and Water recommending the Adelaide Park Lands, Squares and City Layout be recommended to the Minister for Planning for State Heritage Area consideration."

There is a distinction in law between a heritage "place" and a heritage "area".

The Park Lands are more than just a single place, so the determination was made to recommend them as a heritage "area". However this also constrains what the Heritage Council can do. It has fewer powers over "heritage areas" than it does over "heritage places".

Under the provisions of the *Heritage Places Act 1993*, the Heritage Council can only **identify** areas of State heritage significance and **promote** the establishment of State Heritage Areas, currently under the provisions of the *Development Act 1993*.

In practice this means that if the Heritage Council determines that an area be recognised as a State Heritage Area, as it has in the case of Adelaide Park Lands, Squares and City Layout, it needs to ask the Minister for the Heritage Places Act (David Spiers, MP) to request the Planning Minister (Stephan Knoll MP) to amend the relevant Development Plan to achieve this outcome.

Therefore, APPA will be writing to both Minister Spiers and Minister Knoll to urge that this be done.

[Subscribe](#)[Past Issues](#)

Share



Tweet



Forward

[Translate](#)[RSS](#)

VIDEO OF THE MONTH - CARRIAGEWAY PARK / TUTHANGGA (Park17)



Special thanks to Hiu (Daphne) Yeung for editing work on this month's video.

Catch up on any of our earlier Park videos at our YouTube channel:
https://www.youtube.com/channel/UCBBBQLY6as_sQv0BoQm69Rw/videos

We're gradually building, in numerical order, a video guide to all parts of the Adelaide Park Lands.

The next one, due for release in the January newsletter, will be [Peppermint Park / Wita Wirra \(Park 18\)](#) which includes the Himeji Japanese Garden and also Osmond Gardens.



Share



Tweet



Forward

LAST SKERRICK OF NORTHERN PARK TARGETED FOR REMOVAL

[Subscribe](#)
[Past Issues](#)
[Translate](#)
[RSS](#)


August 2014



November 2017

photos: Aussie Kanck



In the scramble over recent years to build a "biomedical precinct" in [Park 27](#), the State Government has so far left just one tiny piece of Park Lands existing on the north side of North Terrace and Port Road. This is the remaining piece, squeezed between the new Royal Adelaide Hospital and the railway line.



However this last skerrick of Park can't be allowed to remain. After months of considering alternative options (including the possibility of purchasing the site of the Newmarket Hotel) the Health Minister, Stephen Wade says this Park Lands site will be used for a new Womens and Children's Hospital.

<https://www.abc.net.au/news/2018-12-04/new-womens-and-childrens-hospital-delay/10580316>

However it's not coming soon. The time frame has blown out to past 2024. By that time, we might have a different State Government that perhaps might want to protect remnant Park Lands.



The obligatory artist's impression of a future Womens and Childrens Hospital as it would look, when it is taking away the last skerrick of Park Lands on the northern side of North Tce/ Port Rd.

 Share
  Tweet
  Forward

WHAT'S ON IN THE PARK LANDS

There are always events scheduled in the Park Lands, many of them free, and there are always opportunities to explore the Park Lands on your own, or with friends or family. Browse our ['Explore Parks'](#) pages for hints about interesting spots to visit. This month's featured opportunities, in date order, are:



[Carols by Candlelight](#) - TONIGHT! Sat 15 December, Elder Park, Tarntanya Wama ([Park 26](#)).

A free event, although reserved seating may be purchased. Pre-show entertainment begins at 5.00pm - 8.00pm. Main event from 8.15pm - 10.30pm. A folded note contribution upon entry would be greatly appreciated to support kids living with disability achieve their goals. Click the pic for details.



[Guided walk through Reservoir Park and Bragg Park \(Parks 4 and 5\)](#) Sunday 16 December 2018 (tomorrow!) 9.30 to 11.00am.

Starting at the corner of Barton Terrace East and O'Connell street (opposite Piccadilly cinema) we'll take in the historic underground reservoir and the re-vegetation project in Park 4, historic tree plantings, with some stories about historic mansions and of course a visit to the award-winning North Adelaide dog park in Park 5. Children and dogs on leads most welcome. Gold coin donation (free for APPA members). Click the pic for details.



[Christmas Lights, Festive Nights](#) - Victoria Square / Tarntanyangga. Every evening until 23 December 4 pm - 9 pm.

The square is transformed into a festive playground bursting with colour, live music, food trucks, Christmas movie screenings and a sleigh-load of merry-making activities. The show-stopper is a life-sized Santa Sleigh and Rudolph the Reindeer display made with over 130,000 LEGO bricks. A great spot for Xmas selfies! Click the pic for details.

[Free Yoga class](#) - Wellington Square / Kudnartu Every Saturday 6pm to 7pm
 Wondered if Yoga was all about twisting like a pretzel? Ever attempted a few classes only to

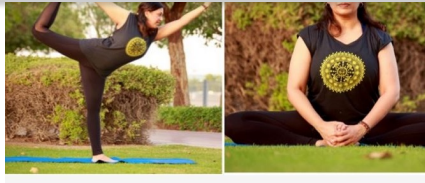
Subscribe

Past Issues

feel overwhelmed by all the downward dogs and Pranayamas? Simply looking for peace, mind, a balanced body and deeper connection to a better life? Click the pic for details.

Translate

RSS



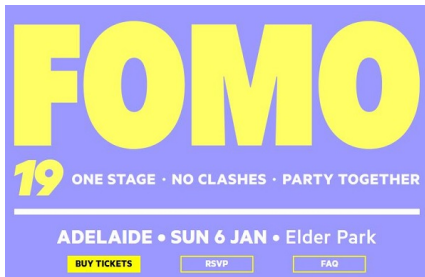
"Forkmas" in Gladys Elphick Park / Narnungga (Park 25). Friday 21 December from 4pm. It's a Xmas showcase of Adelaide's food Trucks, Vans, Carts and bikes all in one location, making the food itself the event.

Click the pic for details.



No Pub Here! - Black Arm Band silent protest at Adelaide Oval, Tarntanya Wama (Park 26). Saturday 5 January, at midday,

Click the pic for details

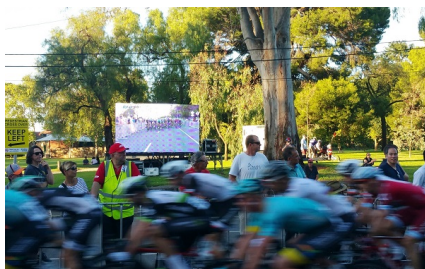


FOMO - Elder Park, Tarntanya Wama (Park 26) Sunday 6 January 11am to 10pm FOMO is a single stage music festival: One stage, no clashes, party together! Line up featuring: NICKI MINAJ ~ RAE SREMMURD ~ LIL PUMP - MURA MASA ~ KALI UCHIS ~ SAN HOLO - ANNA LUNOE ~ SOPHIE ~ COSHA - CARMOUFLAGE ROSE ~ JUST A GENT - MIMI ~ triple j UNEARTHED WINNER

Click the pic for details



Tour Down Under Village - Victoria Square / Tarntanyangga 10 to 20 January 2019 Walk amongst the world's best cyclists and check out the latest cycling gear. Watch the team mechanics at work, test ride the newest bikes, watch the race on the big screen, check out the latest cycling equipment, be inspired and deck yourself out like the pros or simply sit back with fabulous food and wine. Click the pic for details



Tour Down Under cycling: Sunday 13 January is the the final stage in the four-day Women's Tour Down Under. The same afternoon is the start of the Men's week-long Tour Down Under. They'll all be racing laps of Rymill Park / Murlawirrapurka (Park 14). 25 laps for the women (starting at 2.40pm) and 30 laps for the men's race (from 4.45pm). Click the pic for details.



Florence + The Machine concert in Botanic Park Wed 16th January from 5pm

Supporting acts: breakout 16-year-old sensation Billie Eilish, and New Zealand indie-troubadour, Marlon Williams.

Click the pic for details

Share Tweet Forward

CROWS CONFIRM INTEREST IN A PARKLANDS MOVE



Adelaide Crows coach, Don Pyke, at the Crows West Lakes headquarters

The Adelaide Crows [have confirmed they've been in talks with City Council administrators](#) about the possibility of relocating their West Lakes headquarters and training facilities into the city – in particular the Park Lands.

A site in [Bullrush Park / Warnpangga \(Park 10\)](#) has been identified as a likely spot. Another alternative is to allow a Crows building to replace the Aquatic Centre in [Denise Norton Park / Pardipardinyilla \(Park 2\)](#).

However former Crows coach, Graham Cornes has warned that such a move would be against the interests of the broader South Australian community:



"The biggest problem facing an AFL club wanting to relocate is the enormous expanse of land that is required for administration, carparking, gym facilities, pool, training grounds and ideally an extra undercover oval for when winter rages.

...

"To give the Crows what they want, and indeed need, would take too big a chunk out of the Park Lands which belong to all South Australians. If the Crows are to move it must be to an area that is already used as a football ground and has room to expand" - Graham Cornes

On the other hand, the extent of land that would be required doesn't seem to be discouraging to some figures within the Council:

"They deserve to be in town, they have Adelaide in their name.

It will be a community facility, they will pay rates.

The message here is that they are welcome."

- Deputy Lord Mayor, Cr Houssam Abiad



Subscribe

Past Issues

Read more in The Advertiser of December 6:

Translate ▼

RSS

[story/09d93f4b28a2f66792d583d8d27fce00](https://www.adelaidenow.com.au/messenger/city/adelaide-city-council-staff-and-councillors-open-adelaidenow.com.au/messenger/city/adelaide-city-council-staff-and-councillors-open/story/09d93f4b28a2f66792d583d8d27fce00)

and December 7:

<https://www.adelaidenow.com.au/sport/afl/teams/adelaide/adelaide-fc-is-being-left-behind-in-the-afl-arms-race-but-a-parklands-move-is-not-the-answer/news-story/fa47b8d440e126eed0ebdff5bb98252>

(\$\$ subscribers only)



Share



Tweet



Forward

2018 - THE WORST YEAR IN PARKLANDS HISTORY?

That headline might seem like an exaggeration, but look at the facts.

In 2018:

1. The State Government refused to return any part of the old Royal Adelaide Hospital site to [Park 11](#), thwarting what would have been a once-in-a-generation opportunity to claw back lost Park Lands;
2. Botanic High School has been built on part of [Park 11](#);
3. Work started on the multi-million dollar extension of the Adelaide Casino, which encroaches into the former Festival Plaza adjoining Elder Park in [Park 26](#);
4. Festival Plaza itself has been destroyed and will be replaced by an office tower, shops, restaurant etc for which taxpayers are paying the Walker Corporation \$180 million;
5. A two-storey \$3 million sports edifice has been built in [Ellis Park / Tampawardli \(Park 24\)](#);
6. The SA Cricket Association fenced and locked a large area of Gladys Elphick Park / Narningga (Park 25) off Port Road, for practice nets, even though it has no lease over the area;
7. A new private tennis "pavilion" is under construction near the corner of War Memorial Drive and Montefiore Rd, in [Possum Park / Pirltawardli \(Park 1\)](#);
8. The new Tree Climb recreation area in [Blue Gum Park / Kurangga \(Park 20\)](#) was permitted to have not just its Tree Climb network (which we welcomed) but also a two-storey office / storage area / cafe / viewing platform (which we didn't welcome).

And remember, this is the scorecard for 2018 alone. There are greater fears for 2019 as outlined in the stories above.

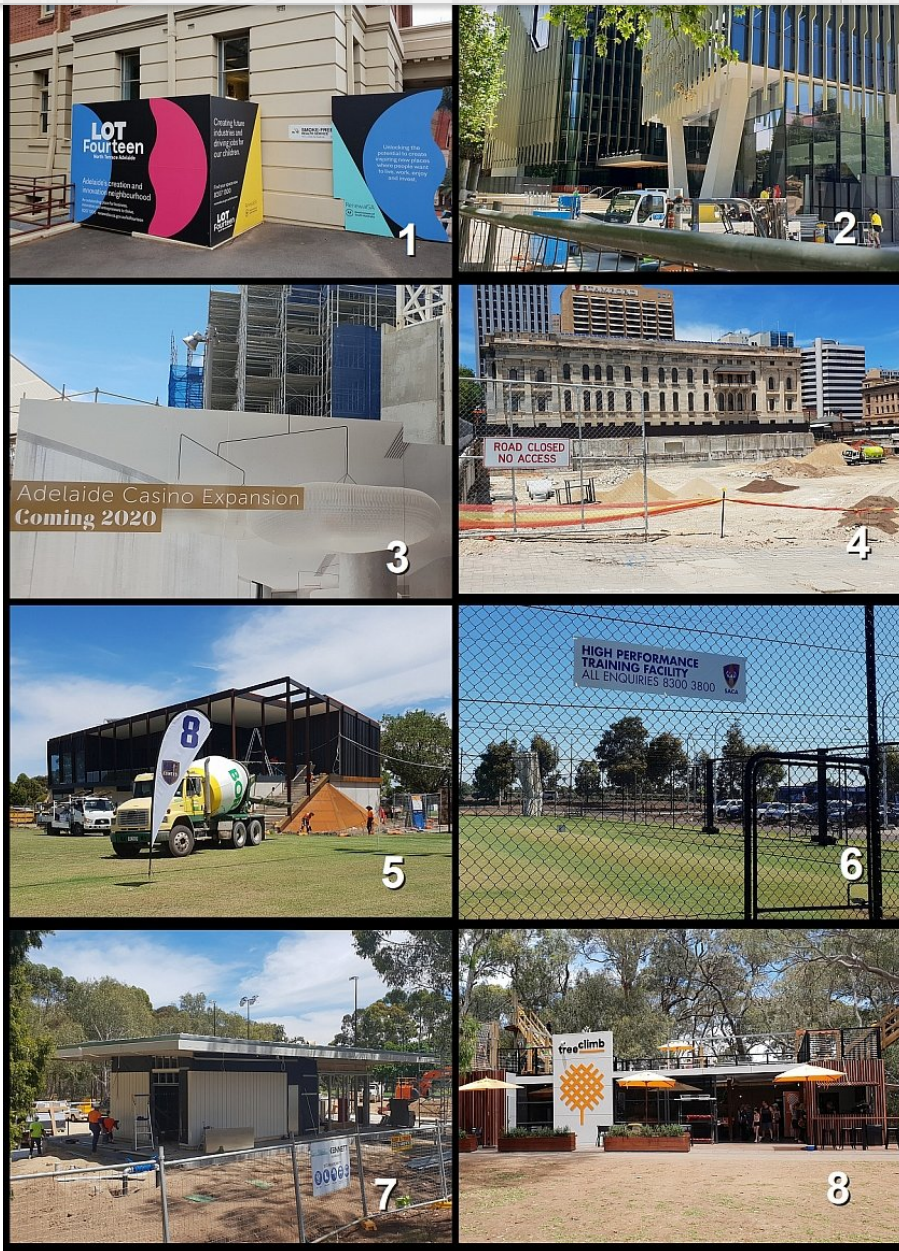
What are YOU doing to protect the Park Lands? Please [TAKE ACTION!](#)

Subscribe

Past Issues

Translate ▾

RSS 



See more on each of these sites at www.adelaide-parklands.asn.au/2018-in-review/

 Share  Tweet  Forward

FIRST PLAYGROUND TURNS 100

[Subscribe](#)[Past Issues](#)[Translate](#) ▾[RSS](#) 📡

The first playground ever built in the Adelaide Park Lands, the Glover South Playground on South Terrace, turns 100 years old next Wednesday, 19th December.

In the words of the Adelaide Mayor of the time, Charles Glover, playgrounds were important to “promote the happiness and well-being of the children of the City”. The Mayor himself provided personal financial support to enable the development of a fully equipped playground on this site, of two acres, adjacent to South Terrace.

Mayor Glover donated £863 toward the playground, over two years in 1918-19.

As originally designed, there were two grassy areas, one area for girls, and one for boys – as well as shade trees, children’s garden plots, sand piles, wading pools, seating and equipment such as swings and see-saws.

Over the course of 12 months the supervisor of the playground recorded over 6,000 attendances per month, equivalent to 200 per day, We don’t have current attendance figures because playgrounds these days don’t have “supervisors” on site.

However it’s very popular especially in fine weather and on weekends. The fully fenced area contains equipment intended mostly for children 7 years and older. There’s a flying fox, climbing net, brightly coloured caterpillar tunnels and a large swinging hoist.

There’s also a brick shelter, with a brass plaque mounted on the wall recording the opening of the Playground in 1918 by the State Governor. This building has what is recognised as “Edwardian” architectural traits. Although it has a relatively modern colourbond roof, the shelter retains its original form, original brickwork, and basic spatial configuration, including the public toilets on either side.

The playground features a pair of mature English Elms and a group planting of eight Golden Ash specimens dating from 1927.

BRIEFLY, IN OTHER PARK LANDS NEWS



What recreational facilities would you like in the south-western corner of the Park Lands?

The City Council is asking for your ideas and suggestions for informal recreational opportunities that the Council might provide in Golden Wattle Park / Mirnu Wirra ([Park 21W](#)). (That's the park in-between Goodwood Road and Sir Lewis Cohen Avenue.) Consultation closes of 4 January 2019. Click the pic for details, or follow this link: <https://yoursay.cityofadelaide.com.au/Park21W-Sports-Hub>



The Rymill Park kiosk has re-opened

The City Council spent months looking for the right tenant to take over the kiosk in Rymill Park / Murlawirrapurka ([Park 14](#)). The business is now up and running under the name 'Loch and Quay'. Yes, the kiosk is a Park Lands alienation but about as low-key as possible and in harmony with its surroundings. Read more here:

Subscribe

Past Issues

<https://citymag.indaily.com.au/habits/nite-and-cup/loch-quay-rymill-park/>

Translate ▾

RSS 



The Art of the City's Park Lands

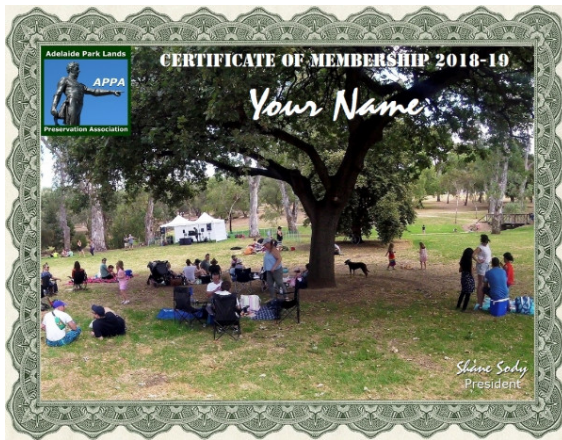
Have you ever wondered about these strange stone mounds alongside Sir Donald Bradman Drive, in Parks 23 and 24? Titled "The Lie of the Land" these public art installations have been in place since 2001. If you're at all curious, take a moment to read Katherine Arguile's superb tribute at InDaily to these 'quiet and unmoving sentinels':

<https://indaily.com.au/arts-and-culture/2018/11/22/art-of-the-city-adelaide-parklands-quiet-and-unmoving-sentinels/>



Beaumont Rd car park resurfacing

For the past 40 years Beaumont Road (at the corner of South Terrace and East Terrace) has been used as nothing more than a car park, effectively alienating what would otherwise be part of either Victoria Park or the adjacent Carriageway Park / Tuthangga (Park 17). APPA had hoped that the car park might have been eventually retired and the area reclaimed as Park Lands. But those hopes have been dashed. The Council has just finished resurfacing the Beaumont Rd car park.



Give the gift of APPA Membership this Christmas
If you know someone who appreciates the Adelaide Park Lands, give them a badge of honour. Give a gift of APPA membership for 2018-19.

We rely almost exclusively on annual membership fees to continue our Park Lands advocacy, so if you haven't already, please consider putting your money where your mouth is and backing APPA to keep up the Park Lands fight. Details here: www.adelaide-parklands.asn.au/membership

As a financial member of APPA, your gift recipient will get:

- the priceless satisfaction of supporting APPA's work;
- free participation in our [monthly guided Park Lands walks](#);
- eligibility to become a Park Ambassador and lead an annual [guided walk through one Park](#);
- the responsibility to help guide APPA's activities through the Annual General meeting; and
- a printable PDF membership certificate (see above).

PHOTOS OF THE DAY - RECENT HIGHLIGHTS

Subscribe

Past Issues

Translate ▾

RSS 

from the top:

- a) Rowers and a BBQ buoy on the River Torrens near Adelaide Oval in Tarntanya Wama ([Park 26](#))
- b) Walking to work through lemon-scented gum blossoms in Rundle Park / Kadlitpina ([Park 13](#))
- c) Native bee hotel in G.S. Kingston Park / Wirranintheta ([Park 23](#))
- d) Preparations for women's cricket match in Gladys Elphick Park / Narnungga ([Park 25](#))
- e) Horses depastured in Lefevre Park / Nantu Wama ([Park 6](#))

The Park Lands 'photo of the day' series has been running since May 2014, and the collection of Park Lands photos gathered over more than four years now numbers 1,700. We maintain (and gradually grow) more than 40 separate albums: one for each one of our 30 numbered Parks, six squares (and several albums for 'Alienations!'). Contributions are very welcome! To find out more about any of these featured Parks, click the link to the Park number.


[APPA on Facebook](#)

[@adelparklands](#)

[APPA website](#)

[Our photos on Flickr](#)

[Our videos](#)

Share

Tweet

Forward

Subscribe

Past Issues

Translate ▼

RSS 📡

Copyright © Adelaide Park Lands Preservation Association, Inc. [2015] All rights reserved.

[unsubscribe from this list](#) [update subscription preferences](#)

