

e-Gazette No. 052 – July, 2019

If this email is not displaying properly (e.g. if it's truncated or there are no pictures or videos) then click to [view this email in your browser](#)

HOW MANY PARK LANDS SUPPORTERS DO WE NEED?



In this newsletter:

- [HOW MANY PARK LANDS SUPPORTERS DO WE NEED?](#)
- [A CALL TO ACTION](#)
- [SSSHH - DON'T TALK ABOUT THE CROWS](#)
- [HOTELS ON PARK LANDS - OPEN SEASON](#)
- [SIGNS OF APPRECIATION](#)
- [KUDOS FOR THE SOUTH PARK LANDS CREEK](#)
- [VIDEO OF THE MONTH - JOSIE AGIUS PARK](#)
- [WHAT'S ON IN THE PARK LANDS](#)
- [TIME FOR A NEW LOGO?](#)
- [BRIEFLY, IN OTHER PARK LANDS NEWS](#)
- [PHOTOS OF THE DAY - RECENT HIGHLIGHTS](#)

TARGET: TENS OF THOUSANDS

The Adelaide Park Lands will be protected from rampant development only when sufficient numbers of South Australians demand that the Park Lands are protected.

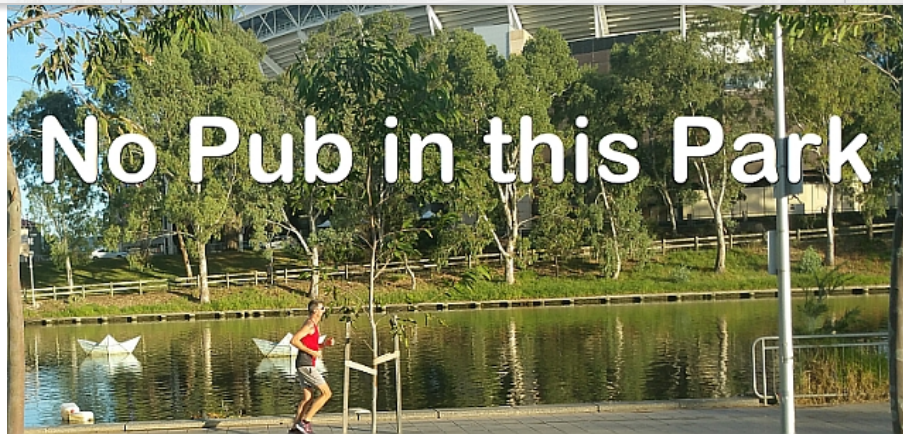
Over the past few weeks, we've found out that in Hong Kong, it takes millions of protestors to get a cause noticed. (See photo above.) In South Australia, we've also found out how many voices are needed to prompt State Government intervention on a heritage issue.

[Subscribe](#)[Past Issues](#)[Translate](#) ▾[RSS](#) 📡

[A Facebook page aiming to save "Shed 26"](#) at Port Adelaide from bulldozers had more than 2,000 supporters, but it wasn't enough to save the building.



Likewise, an 1863 Victorian villa, "[Moorfield](#)" at North Plympton also was [demolished recently](#) despite attracting thousands of supporters who wanted it preserved. A [petition to "protect South Australia's heritage from demolition"](#) has close to 5,000 signatures.



APPA's recent petition to save Tarntanya Wama (Park 26) from attack by a commercial hotel development at Adelaide Oval ("[No Pub In This Park](#)") was also insufficient to provoke any re-think by the Premier, despite more than 1,800 signatures.



It seems the threshold to get noticed by the State Government action is much higher.

When [a petition to "Save the Thebarton Theatre"](#) reached 45,000 signatures, Premier Steven Marshall was prompted to respond. The petition is still growing, with more than 54,000 signatures, and the Thebarton Theatre is probably safe.

But as [this article in the Adelaide Review](#) points out, a groundswell of tens of thousands of supporters needed to protect a single heritage site, represents a very high bar for community activists.

What does the existence of this very high bar mean for the future of the Adelaide Park Lands?

We are waiting on the State Government to confirm whether or not the Park Lands will be acknowledged as a State Heritage area.

Heritage Minister David Speirs has been deliberating on that question since December last year. He hasn't responded to [our letter of 29 December 2018](#) asking for a positive decision.



Do we need more than 40,000 people demanding action before the State Government will move to protect the Park Lands?

Probably we do. And we will get over that high bar, with your help. We believe that hundreds of thousands of South Australians cherish the Adelaide Park Lands and would want them protected. Most of them probably don't realise, yet, how the Park Lands are being whittled away.

Until we can reach and persuade that many people, every part of the Park Lands faces

[Subscribe](#)[Past Issues](#)potential attack. There are multiple present dangers. See them here: www.adelaide-parklands.asn.au/current-issues[Translate](#) ▼[RSS](#) 📡

We do not yet have the critical mass of supporters to achieve political action to protect the Park Lands. But we will get there. Please spread the word to your friends, and take action.

www.adelaide-parklands.asn.au/take-action



Share



Tweet



Forward

ACALLTOACTION



We get feedback sometimes that our newsletter is filled with bad news about threats to and losses from the Park Lands.

We try to strike a balance between positive and negative stories, but we wouldn't be fulfilling our role as a watchdog if we didn't highlight the risks, dangers and threats.

This month we are being both critical of the City Council (re the Crows push for Park 2) but also complimentary of the City Council (over new signage and creek rehabilitation works). See the separate stories below.

We hope you see these stories as both encouragement, and a call to action. If you care about the Adelaide Park Lands, look at the suggestions for action here:

www.adelaide-parklands.asn.au/take-action

This month, in particular, we're looking for a couple of volunteers (must be APPA members) to take over a role as Park Ambassador for:

- Rymill Park / Murlawirrapurka ([Park 14](#)); and
- Ellis Park / Tampawardli ([Park 24](#))

These two Parks don't yet have their Park Ambassador, nor have they (yet) hosted an APPA Guided Walk. We need one or two volunteers to step up and be the voice for each of those two Parks. You could share the role with your partner if you like.

Find out about each of these Parks by following each park number link ([Park 14](#) and [Park 24](#)).

Find out about the Guided Walk program at www.adelaide-parklands.asn.au/guided-walks



Share



Tweet



Forward

SSSHH - DON'T TALK ABOUT IT

Some people prefer not to talk about an elephant in the room.

The Adelaide City Council won't talk about the herd of elephants that they're preparing to unleash on Park 2 of the Adelaide Park Lands.



After four months of secret negotiations with the Adelaide Football Club about a takeover of the Aquatic Centre, the Council last month released what it says are "[Guiding Principles](#)" to help the AFC to get what it wants - a multi-storey building on Park 2.

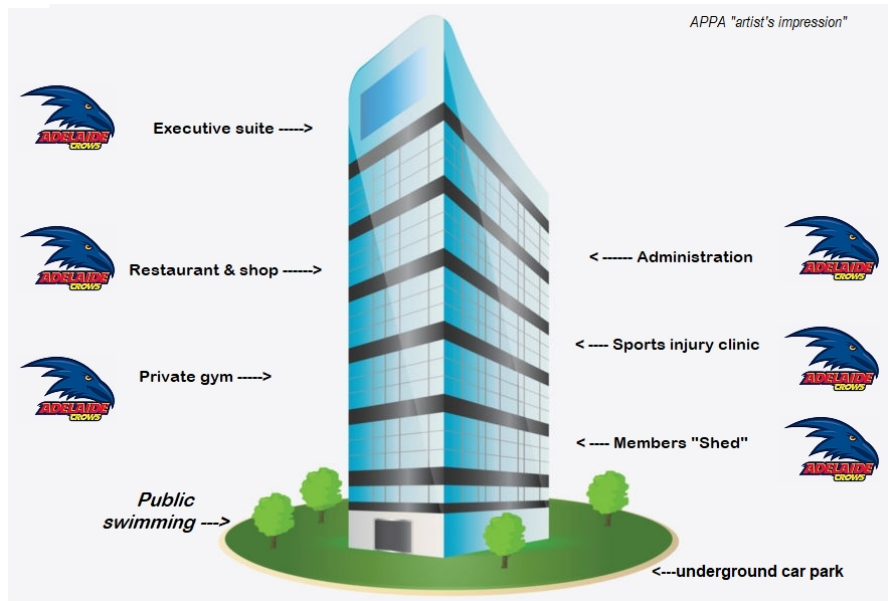
The Council would prefer that we didn't mention all the elephants unleashed by their "[Guiding Principles](#)".

But here are the elephants - the things that the Council's wish list doesn't cover - the things that (so far) the Council has refused to even put out for public feedback:

- * An increase in car parking
- * Any limit on building height
- * New roadways into Park 2
 - * Removal of trees
- * New fences to protect designated training fields
 - * High powered lighting for training fields
- * Cafes, bars and/or restaurants, competing against North Adelaide businesses
 - * A Crows shop selling fan merchandise
- * A sports medicine clinic to compete with other clinics in commercial locations
 - * The cost of pool access for school, club and community swim events
 - * Any pool access for learn-to-swim classes
 - * Child care at the Aquatic Centre
 - * A private members-only gym
- * Facilities priced much higher than the Council currently charges.

We have no concerns about Blackfriars, or any and all community groups sharing the use of the sporting ovals in Park 2. That's what they're for. Nor should anyone object to the Adelaide Football Club using one or more of the ovals for training. Many of the sporting grounds in the Park Lands are licensed (and sub-licensed) to various schools and community groups. The grounds are always open for use by the public when the various licensees are not using them. No problem.

What we are focussed upon is the plan, currently being drawn up, for a new multi-story private building. See below our own "artist's impression" which is based on a combination of what the Crows say that they want, and what the Council's Guiding Principles would permit.



Tell the City Councillors to round up their elephants and put them away. Contact a Councillor now, before it's too late. See how to contact them here:

www.adelaide-parklands.asn.au/crows

WHO DIDN'T VOTE FOR IT?

Not all City Councillors were prepared to unleash a herd of elephants. These four (below) thought that the public should be consulted before the Adelaide Football Club was invited to draw up expensive plans to fit the [Guiding Principles](#).



This month, we've invited Councillor Robert Simms to share his views:

"When we are talking about public land, the public should always be consulted before plans are developed. While Council will have a right to reject any proposal from the Crows, I would have valued the opportunity to hear from the community their thoughts on whether such a project should even be entertained.

"This process highlights a growing problem in our city. There seems to be a belief, in some quarters, that the Park Lands are free land that can be made available to private enterprise, often with scant regard for public opinion.

"In a city that's plagued by vacant commercial land and buildings, the idea that the only option available to business is the Park Lands (public land) beggars belief.

Councillor Robert Simms (views are my own and do not purport to be those of Adelaide City Council)



Councillor Robert Simms with Denise Norton-Wangel on Tuesday 30 April at the official naming ceremony for Denise Norton Park / Pardipardinyilla ([Park 2](#)) the site of the proposed Crows corporate takeover.

There's no need to wait for the official glossy-brochure "consultation" in the Council's long-overdue "engagement plan".

You can convey your views to [City Councillors](#), and to the [Crows CEO Andrew Fagan](#), before the footy club gears up its plans.

Find out more at

www.adelaide-parklands.asn.au/crows



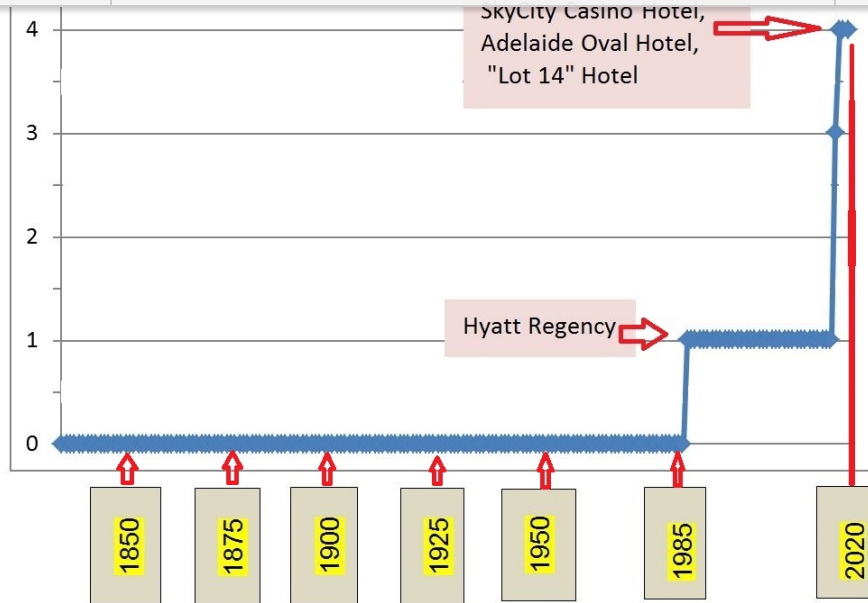
HOTELSON PARKLANDS - IT'S OPEN SEASON

Subscribe

Past Issues

Translate ▾

RSS 📡



How many hotels have been permitted on the Adelaide Park Lands? Until the present State Government took office, only one, in 1985. The current State Government is allowing another three. What part of the word "Park" is so difficult to understand?

To be fair, the SkyCity Casino hotel (currently under construction) was approved by the former State Labor Government. However, the State Liberals were critical of the deal when they were in opposition, and they had a chance to walk away from it when they took office in March 2018, as [we urged them to do](#).

However they were not prepared to rock the boat with the powerful gambling industry, so that when the Government changed after the State election in March 2018, the SkyCity Casino hotel was allowed to proceed.



Since then, the State Liberal Government has approved two more hotels on Park Lands. One at Adelaide Oval in [Park 26](#), and the other on the former RAH site, misleadingly re-named "Lot Fourteen" in [Park 11](#).

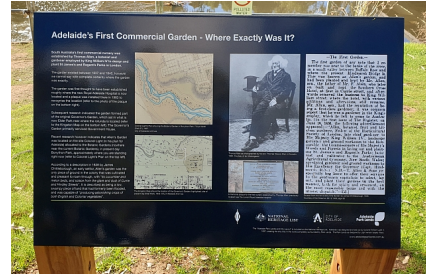
How many more will they allow? What's the limit?

You can read more about the Adelaide Oval hotel issue at www.adelaide-parklands.asn.au/oval-hotel

See the other current threats to Park Lands at www.adelaide-parklands.asn.au/current-issues

Share
 Tweet
 Forward

SIGNS OF APPRECIATION



It's hard to miss the growing number of interpretive signs that have been emerging in the Adelaide Park Lands.

It's not a new initiative. These signs have been installed, one at a time, since 2014. However the pace seems to have accelerated this year, with 22 new signs installed, making more than 100 in total.

APPA congratulates the City Council for helping to spread awareness of the cultural and social history associated with each specific part of the Park Lands.



Share

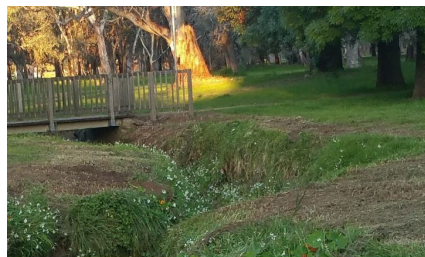


Tweet



Forward

KUDOS FOR THE SOUTH PARK LANDS CREEK



We're also praising the City Council this month, for the work carried out so far on the South Park Lands Creek.

This is a massive undertaking, spread over a five-year period. In the current financial year alone, some \$800,000 has been allocated for the next stage.

The South Park Lands Creek is an artificial drainage channel, originally constructed in 1917. It drains water from the southern end of Victoria Park / Pakapakanthi ([Park 16](#)) across Parks [17](#), [18](#), [19](#) and [20](#).

The rehabilitation does three things:

- Improve safety – the old creek banks were very steep and hazardous. Falling into the creek was a real risk
- Improve biodiversity with reeds and other native plants
- Reduce flooding risk with a new wider creek bed.

See the photos (above) of creek sections before and after the rehabilitation works.

Subscribe

Past Issues

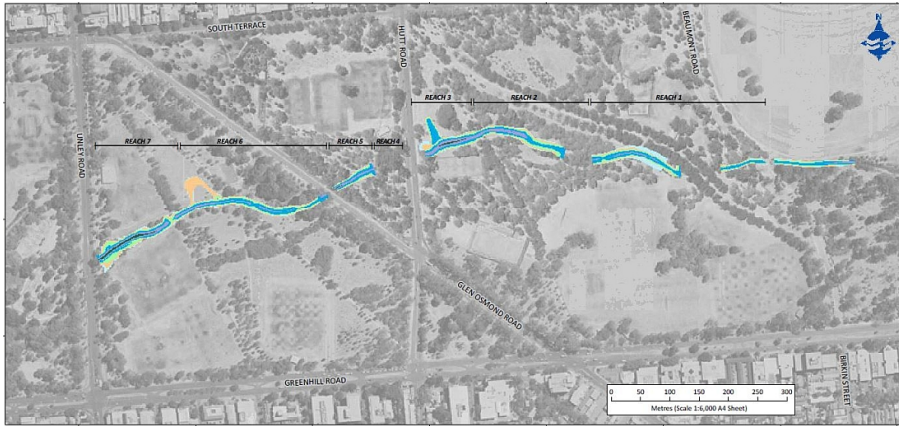
APPA has written to the Lord Mayor praising the project. The work will continue for at least the next two years.

Translate

RSS

You can read the South Park Lands Creek Master Plan here:

<https://yoursay.cityofadelaide.com.au/19759/documents/37329> (10.3 Mb, PDF)



Share Tweet Forward

VIDEO OF THE MONTH



Josie Agius Park / Wikaparntu Wirra ([Park 22](#)) – best known as the home of community netball.

Next month's video will be a preview of the 2020 Adelaide Park Lands Art Prize featuring highlights of the 2018 Art Prize.

Catch up on any of our earlier Park videos (Park 1 through to Park 21W) by following the links at www.adelaide-parklands.asn.au/explore-parks

Share Tweet Forward

[Subscribe](#)[Past Issues](#)

WHAT'S ON IN THE PARKLANDS

[Translate](#) ▾[RSS](#) 📡

There are always events scheduled in the Park Lands, many of them free, and there are always opportunities to explore the Park Lands on your own, or with friends or family. Browse our "[Explore Parks](#)" pages for hints about interesting spots to visit. This month's featured opportunities are:



[July School Holidays at the Botanic Gardens](#). There's something for everyone: budding gardeners, plant and animal lovers and crafty types. Whatever your little one is in to, each event has been designed to promote fun, hands-on learning about plants, animals and the environment. Suitable for 5-13 year olds but parents will enjoy the activities too! Click the pic for details.



[Skating in Victoria Square / Tartanyangga](#)
Last few days - finishes Sun 21 July
Tues-Wed: 10am - 9pm
Thurs-Sun: 10am - 10pm

Prices vary. Click the pic for details



[Parkrun](#) - a free 5km run held every Saturday at 8am at Victoria Park / Pakapakanthi ([Park 16](#)) and also at the Torrens Weir in [Park 27](#).

Try for a personal best or simply enjoy the Park setting without busting a gut!

Click the pic for details.



[Jurassic Creatures](#)

Interactive walk-through animatronic dinosaurs at Bonython Park / Tulya Wardli ([Park 27](#)) continues until 28 July.

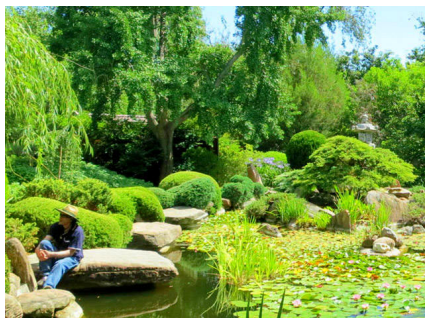
Bookings essential - prices vary.

Click the pic for details



[Guided Walking Tour of the Adelaide Botanic Garden \(Park 11\)](#)

Trained volunteer Garden Guides (from the Friends of the Botanic Gardens) conduct FREE guided walks, lasting about an hour-and-a-half. No booking required (unless in a group of five or more). Leave from outside the Visitor Information Centre at the Schomburgk Pavilion at 10.30am daily. Click the pic for details



Visit the Adelaide-Himeji Garden in Peppermint Park / Wita Wirra ([Park 18](#))
Open from 8am to 5.30pm, seven days a week except during April to September when it closes at 4.30pm on weekends and public holidays.

The Garden contains features of profound religious significance to the Japanese people, and features designed to recall the beauty of nature. Entry is free.

Subscribe

Past Issues

Translate ▾

RSS 📡



[Popeye River cruises](#). See Adelaide from the best seat in the house, by cruising along the Torrens River in the heart of the city in a heritage icon. Enjoy a 40-50 minute cruise with a running live commentary from the friendly skipper. Operates every day.

Tickets from \$15.

[Click the pic for details](#)



[West Terrace Cemetery Tours](#) - ongoing, day or night options.

Delve into almost two centuries of real South Australian stories as our knowledgeable guides bring life to many captivating and long-forgotten tales of SA's leaders, pioneers, humanitarians and scallywags.

[Click the pic for details](#)

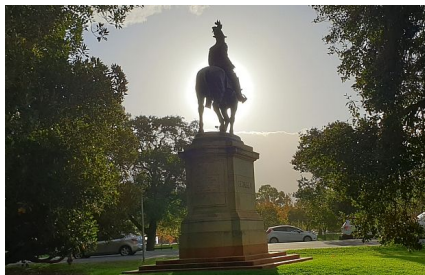


Informal community walk in South Park Lands.

Every Sunday morning 8.30am corner South and East Tce.

Walk for an hour, then coffee after in Pulteney St.

Contact Ally Preiss 0409 716 582 or aapreiss@live.com.au



[Guided walk in Red Gum Park / Karrawirra \(Park 12\)](#) - Sunday 11 August - 1.30pm to 3pm

Join APPA's Damien Mugavin for a guided walk, learning about one of the best-loved parts of the Park Lands, along the banks of the Torrens, home to a variety of public art works and University facilities. [Click the pic for details.](#)

TIME FOR A NEW LOGO?

Subscribe

Past Issues

Translate ▾

RSS 



from this....



to this.....



.....to this.....



...to what?

Ever since our inception in 1987, APPA has used the figure of Colonel William Light to represent our organisation.

Our managing committee has decided to look at the possibility of a new logo, and so we're inviting friends and supporters to pitch suggestions at us.

It's not a competition. There's no prize money at stake. We're just asking for help from people, like you, who have an interest in protecting and raising the significance of the Adelaide Park Lands.

If you are a graphic designer or know someone who is, then please have a think about how we might better represent the Adelaide Park Lands Preservation Association in print and on line.

We've got a design brief - which [you can access here](#).

There's no deadline, but we would welcome suggestions before the end of September 2019.



Share



Tweet



Forward

BRIEFLY, IN OTHER PARK LANDS NEWS

[Subscribe](#)[Past Issues](#)[Translate](#) ▼[RSS](#) 📡

Future proofing power of the Park Lands needs protecting

Our Park Lands are an internationally recognised asset we are blessed to have while climate change and urbanisation loom large – but they are at risk if we don't respect and protect them, writes Australian Institute of Architects SA Chapter President Tony Giannone.

"Hear, hear!" (we say) as he goes on to proclaim that the Park Lands are our most unique identity and that:

"Perhaps the search for an Adelaide identity should be more vested in the landscape and cultural heritage of the Parklands rather than anything we can produce in the built form."

Powerful words from one who designs buildings for a living!

Read the full [article](#)



Community Alliance S.A.

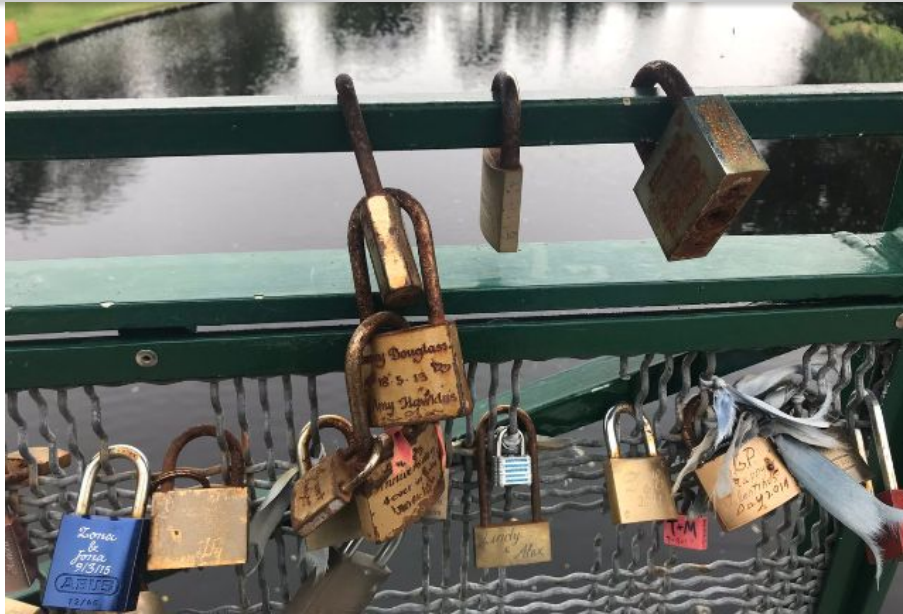
Supporting genuine community engagement

APPA recently renewed its membership with Community Alliance S.A.

This is an umbrella organisation dedicated to "putting the people back into planning and development in SA."

They aim for genuine community engagement along with planning/development that is accountable, transparent and sustainable.

More information at <https://communityalliancesa.org.au/>



Love's lost locks

Years after first being officially discussed by Adelaide City Council, the estimated 500 "love locks" on the Adelaide University footbridge in Park 12 are being removed.

The "love locks" started appearing on the footbridge in 2013. About half of them will be moved to a nearby public artwork called *Riverbank Love Knots*.

The remainder, which are too rusted and cannot be picked, will be thrown out.

Read the *The Advertiser* [subscriber article](#)



Alienations – now there's an official APPA list

For the first time, APPA has compiled a spreadsheet of Park Lands alienations, which will be used for future research and mapping.

The "[Alienations](#)" [page of our website](#) has been augmented with a spreadsheet that you can download, detailing each of 191 Park Lands alienations, dating from the oldest (Adelaide Gaol) to the newest (SkyCity Casino hotel). Each line of the spreadsheet contains a link to a photo of the alienation.

The spreadsheet will not ever be finished as we are adding to the list every week, and of course it will need to be revised every time buildings are replaced, enlarged, etc.

We have offered internships to two students at Adelaide University (studying Environmental Policy & Management) who will use the data in this spreadsheet in two separate research assignments. In addition, we have had an offer of help from a software engineer to map these alienations in Open Street Maps.

These resources will be valuable to help people understand how much of our Park Lands have been lost so far, and why it's so important to prevent further losses.

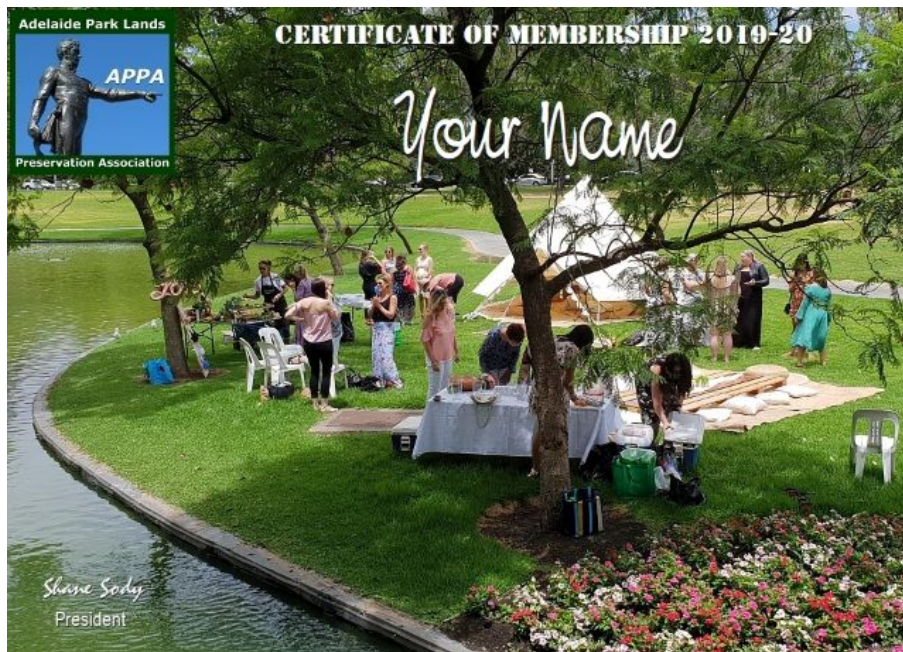
[Subscribe](#)[Past Issues](#)[Translate](#) ▼[RSS](#) 📡

Who should manage the River Torrens? And how?

As mentioned in our [past two monthly newsletters](#), APPA has been participating in a review of how the River Torrens is governed. APPA's Ted Jennings attended a workshop on July 14 at the City of Charles Sturt. The next workshop is scheduled for August 15, when the final two governance models will be adjusted and voted upon.

The aim of the workshops is to develop a new governance model, to break away from "business-as-usual" and design a better outcome for the River.

Models being voted on involve multi-level reporting to a governing agency to a more simplistic "round-table" model which has been used in other countries to govern long water courses.



JOIN US!

This is our membership certificate for 2019-20. We rely almost exclusively on annual membership fees to continue our Park Lands advocacy, so if you haven't already, please consider putting your money where your mouth is and backing APPA to keep up the Park Lands fight.

As a financial member of APPA, you receive:

- the priceless satisfaction of supporting APPA's work;
- free participation in our [monthly guided Park Lands walks](#);
- eligibility to become a Park Ambassador and lead an annual [guided walk through one Park](#);
- the responsibility to help guide APPA's activities through the [Annual General Meeting](#); and
- a printable PDF membership certificate.

Those who've already paid their 2019-20 membership have already received one of these printable certificates.



Share



Tweet



Forward

PHOTOS OF THE DAY - RECENT HIGHLIGHTS



From the top:

- a) Sunrise over the South Park Lands Creek in Carriageway Park / Tuthangga ([Park 17](#))
- b) Jogging on the Park Lands trail through Bonython Park / Tula Wardli ([Park 27](#))
- c) North Adelaide dog park in Bragg Park / Ngampa Yarta ([Park 5](#))
- d) Sulphur-crested cockatoos on the banks of Botanic Creek in King Rodney Park / Ityamai-itpina ([Park 15](#))
- e) One of the police "greys" amongst the historic olive trees in Kate Cocks Park (part of [Park 27](#))

The Park Lands "photo of the day" series has been running since May 2014, and the collection of Park Lands photos gathered over more than five years now numbers over 1,900. We maintain (and gradually grow) more than 40 separate albums: one for each numbered Park and Square, along with several albums for "Alienations". Contributions are very welcome! To find out more about any of these featured Parks, click the link to the Park number.

Despite being a National Heritage-listed place, the Adelaide Park Lands are not well protected by Federal environmental laws.

[Subscribe](#)

[Past Issues](#)

...we've joined the [Places You Love Alliance](#), to campaign along with 55 other organisations for better environmental protection laws.






[Translate](#) ▾

[RSS](#) 📡







**BETTER LAWS
FOR A
BETTER PLANET**

We are a member organisation of the national "Places You Love Alliance"

[APPA on Facebook](#)
 [@adelparklands](#)
 [APPA website](#)
 [Our photos on Flickr](#)
 [Our videos](#)

 Share
  Tweet
  Forward

Copyright © Adelaide Park Lands Preservation Association, Inc. [2015] All rights reserved.

[unsubscribe from this list](#) [update subscription preferences](#)

