

TRANSIT STATION: RETROSPECTION AND CONNECTION

Wenxuan Zhang
Bonython park/ Tulya Wardli car park design

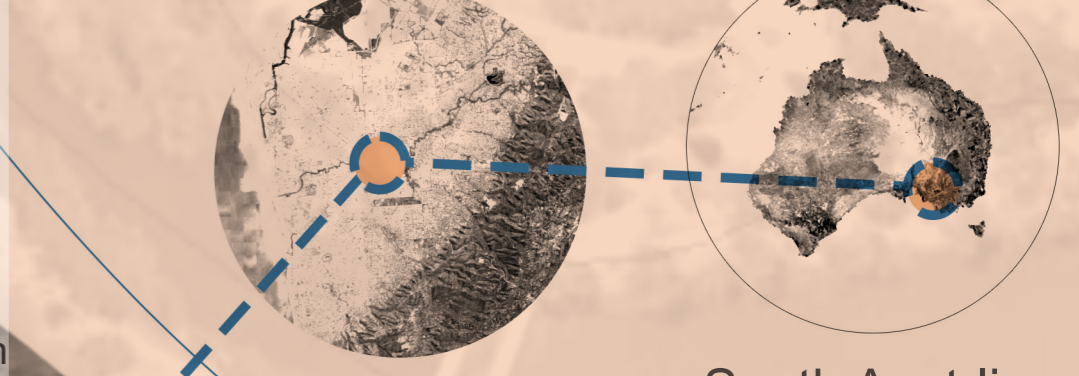
The site is in the corner of the parking lot and is currently used for people to rest and wait for public transport. The project proposes a new destination venue, which transforms this area into a place for activities and connections.

The design is loosely inspired by the migration of the Kaurna people "waadla-warnka-ti" who came to the plains to build wardli houses and huts during their second month (April) in Panati. Then leave again before summer arrives. This is in line with the function of the venue for people to stay without being too short or too long.

The hut-like structure is made of 'fallen trees'. In the design, the posts are functioning as both the structure and replicating their living atmosphere. The design uses 'fallen tree' totems, which are linked with wooden boards. This creates a variety of functions and spatial forms, which are flexible.

Users of the space can change and add to the design; the site offers engaging sandscapes, community garden 'flower pots' and artistic chalk pavement doodles. People can use broken tree branches to create patterns, visualising sand as moving water and rocks as mountains. By providing users with flower pots, they can decorate the site with flowers and plants and share this experience with each other. The chalk patterns on the colourfully painted asphalt provides opportunities for storytelling and fun within this natural and artificial landscape.

LOCATION:



Adelaide

South Australia

Hut under trees

CREATING THE STRUCTURE

Traditionally, Kaurna people use branches to build houses and live in the shade of trees.



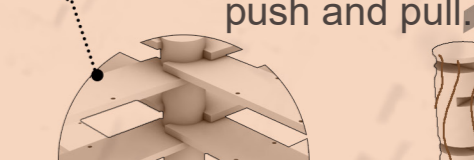
There are holes in the wood for hanging POTS and for holding POTS in place.

GROWING THE STRUCTURE

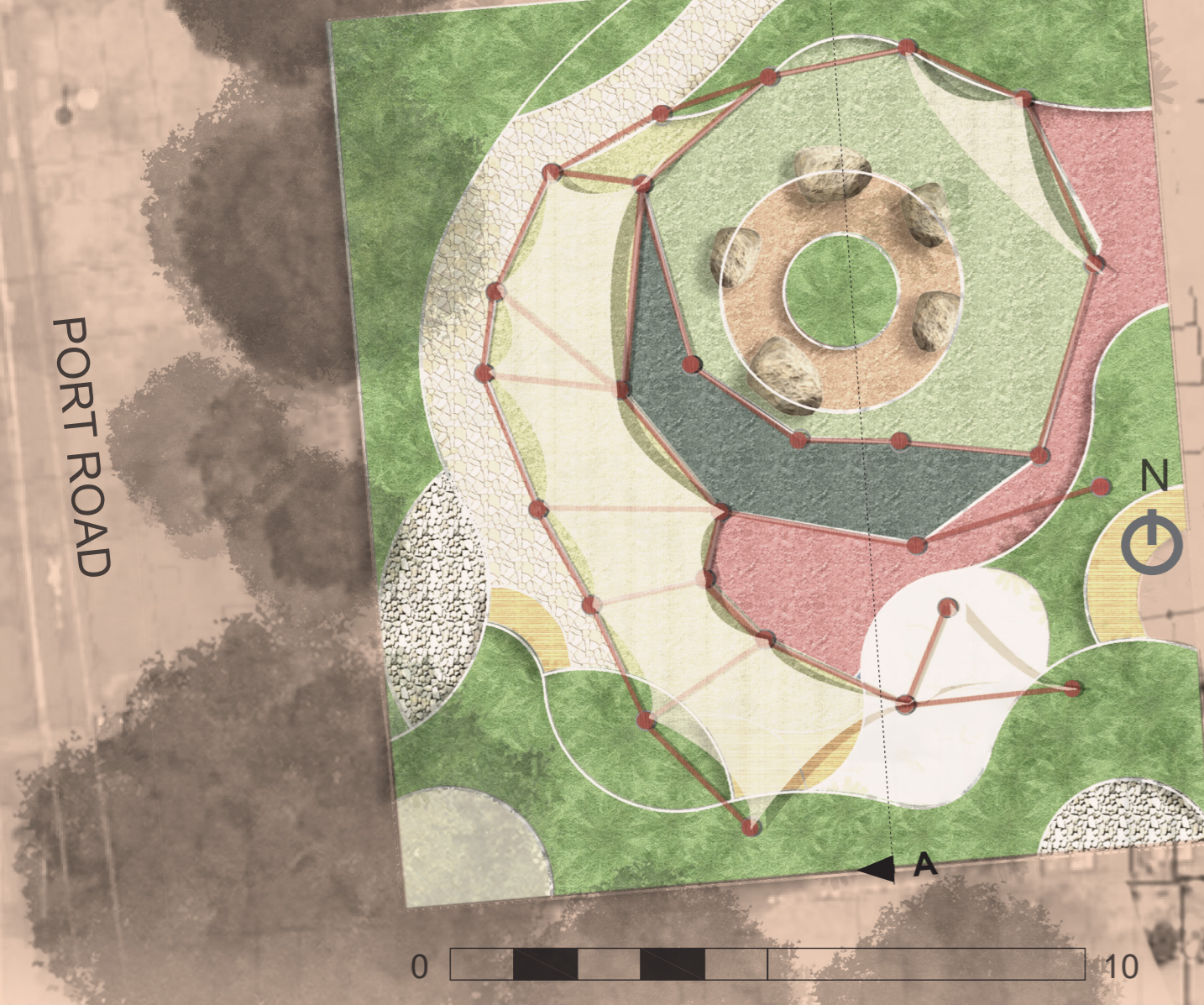
Boards can be installed and removed by push and pull.

MOVING THE STRUCTURE

Tilt totem 15 degrees and link to planks



PLAN



Ledgend

- Existing tree
- Garden bed
- Pavement
- Sitting rock
- Hessian shelter
- Totem and planks
- Coloured asphalt 01 and 02
- Coloured asphalt 03 and 04
- Coloured asphalt 05
- Small loose stones
- Landscape sand pit

PORT ROAD

PORT ROAD

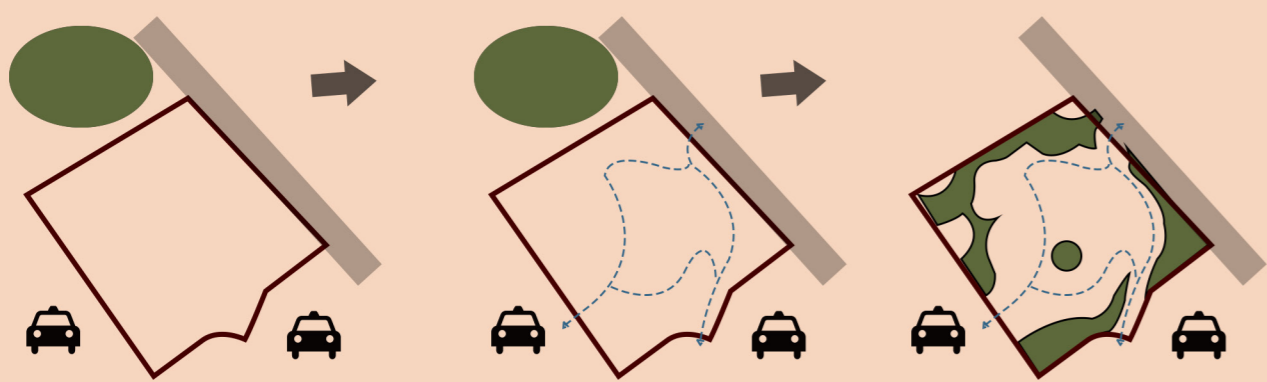


Small wooden platform that can be used for rest and as a performance space.



Landscape surface includes sand which allows for painting with branches, allowing users to participate in landscape creation

SPATIAL DERIVATION



The site is surrounded by plants, parking lots and roads

Connect roads and parking lot locatin with pathings

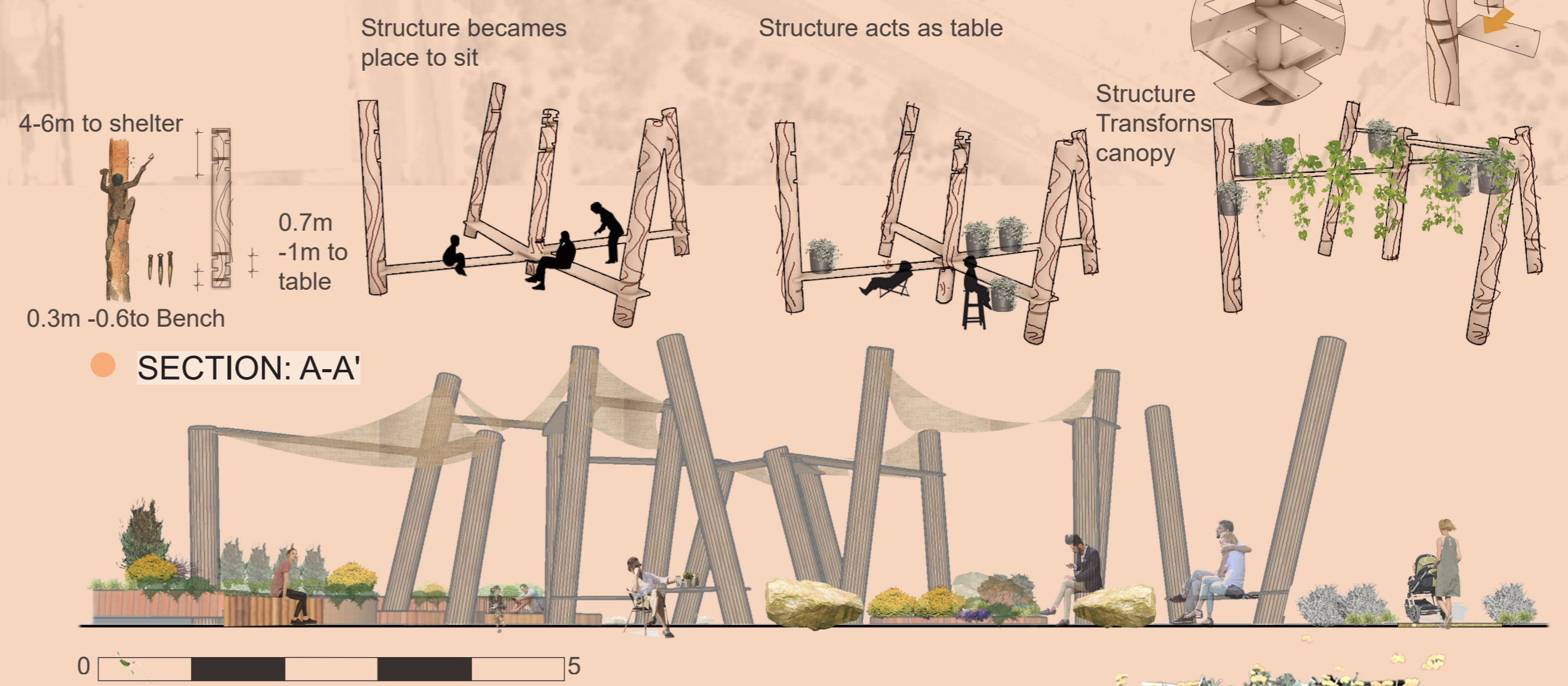
Use plants to create a barrier between the parking lot and the rest area. Vegetation is used to establish a visual focus in the center of the area



Community involvement in design. Landscape sand, Space invites scape sand, vegetation sharing and white chalk graffiti

Tilt totems, build verandas, tables, seats and wooden platforms

Establish structure according to site space requirements. Paint the existing asphalt bright colours to emphasize space and invite users.



Space is generously scaed to meet the collective activities of many people, such as children's craft workshop. At the same time, the painted pavement and white chalk are provided for children to participate in the landscape design