

### 11. Original flora

A river red gum, one of very few in your Adelaide Park Lands that pre-date European settlement.



### 12. Moreton Bay fig tree avenue

Planted 1866, probably the oldest surviving avenue of these trees anywhere in Australia.



### 13. Australian Forest

See the famous Wollemi Pine, huge Kauri pine, Queensland Bottle tree and dome-shaped Bunya pine.



### 14. Roses

The 'International Rose Garden' off Hackney Road has been acknowledged as being of "Global Excellence" by the World Federation of Rose Societies.



### 15. Bicentennial Conservatory

"Curvilinear" in shape, the youngest building on the State Heritage register, winner of multiple architectural awards. It hosts a collection of rainforest plants with a raised walkway to take you up into the canopy.

## WHO ARE WE?

The Adelaide Park Lands Association is a community-based, non-profit organisation.

We help you **explore** with Guided Walks, and **inspire** you with art and images, as we **protect**, and **restore** Adelaide's unique, National Heritage-listed irreplaceable garland of Park Lands.

Please join us as a member, to support our work and enjoy free participation in our regular Guided Walks



Scan this QR code for the full Trail Guide on our website

[www.adelaide-parklands.asn.au](http://www.adelaide-parklands.asn.au)



# Adelaide Park Lands Association

## EXPLORE

### Adelaide Botanic Garden (in Park 11)

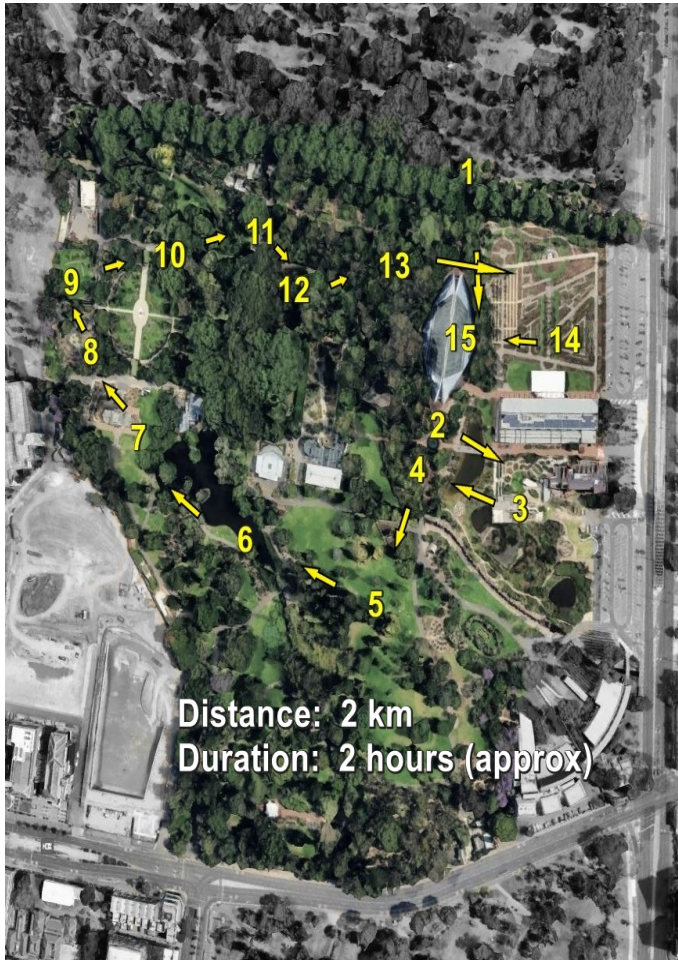
Scan the QR code on the back of this leaflet for the full Trail Guide



This Trail Guide traverses traditional lands of the Kurna people. We acknowledge and pay respect to the past, present and future traditional custodians and elders of this land.

## 1. Introduction

First opened 1857, by far the most popular part of your Adelaide Park Lands – 51 hectares featuring 11 different specialty garden areas. Open every day, no dogs allowed! This Trail Guide is only one way to experience the Garden. Volunteer guides give free tours every day at 10.30am.



## 2. “Cascade” (1988)

500 precision-cut pieces of glass, each 6 millimetres thick, in the shape of a cascading wave.

## 3. First Creek wetlands

Three linked ponds that feed stormwater into an aquifer that in turn, provides irrigation throughout the Botanic Garden; home to about 20,000 plants.

## 4. Oldest tree

Retrieved from Mt Crawford, a river red gum, thought to have lived between 1,500 to 2,000 years ago.



## 5. Araucaria Avenue

Trees that were contemporaries of dinosaurs. This avenue includes four New Caledonia pines, and 12 Norfolk Island pines, planted in 1868.

## 6. Main lake (Kurna: “Kainka Wirra”)

Despite its engineered appearance this was a Kurna waterhole long pre-dating European settlement.



*Pictured 1908 and colourised by Kelly Bonato*

## 7. Palm House

Imported from Germany, 1877 – and painstakingly restored in the 1990’s, it is thought to be the only surviving such building in the world. It hosts plants from Madagascar.



*1877 Palm House*

## 8. Garden of Health

Demonstrates the use of plants to heal and promote well-being in western and non-western cultures.

## 9. Ginkgo gate

The fan or butterfly-shaped motif adorning the Gate is the leaf of the Ginkgo Biloba tree. There’s a living specimen of this tree growing here near the Gates.



*2010 Ginkgo gate*

## 10. Economic Garden

Dedicated to plants regarded as having ‘economic value’, such as for eating or weaving. At the centre, the heritage-listed 1908 “boy and serpent” fountain.