

ParkLANDS news

December 2012 Number 49

Contents

President's letter ... 2	10 ... Surveying world heritage
Issues on the table ... 2	12 ... Water pilfering: the west
Editorial ... 2	14 ... Carbon fraud and tree deceit
Boycott of Cirque du Soleil ... 3	15 ... Town Hall honour reality check
Park Lands bouquets ... 3	15 ... Did you know?
Maroonhood native orchids discovered ... 3	15 ... Rebadging <i>Danthonia</i>
Mozzie menace: 5000 victims a year ... 4	16 ... Boiling frog syndrome
Branding the (Adelaide) Park Lands ... 4	16 ... Signs of the times
ACC Park Lands car park capers ... 5	17 ... What's in a title?
Unsustainable secrets ... 6	17 ... Victoria Park – don't miss this race
'Minimal disturbance' a flying success ... 7	18 ... For the record
Scraping the surface ... 7	19 ... 'Who took the people's Park Lands? It was him.'
What's it for? ... 7	
Park Lands digs ... 8	



President's letter

Ian's Lament

We have recognized that we really need to excite more people to cherish, celebrate and enjoy our Park Lands!

To be resigned to a future of being categorised as a vociferous carping minority—which is always right, mind!—may be an avenue for spleen but will not save the Park Lands in the long run. This 'long run' has to be at least viewed as extending for the next 200 years.

This is the rub, because the political and popular view rarely stretches past a decade, if we're lucky.

It is clear that the rate of alienation of the last decade, if continued, would leave little open space amongst all the 'irresistible proposals' of the next 200 years.

Why do I think that the generations of powers-that-be would not wake up to the situation and reverse the trend before it is too late? Because for 'motherhood' statements, hollow calls for protection of the Park Lands, emotional platitudes of the wonder of the Park Lands, strident claims of how the Park Lands set Adelaide apart as 'Superb', and for sheer hypocrisy, the leaders and spokespeople of South Australia for previous and current times fill me with despair!

We need a majority of people to cherish the Park Lands as they would their own garden, to revere the Park Lands as a precious heritage held in trust, with the concept of the Park Lands held free of economic exploitation, free of administration offices.

ISSUES ON THE TABLE

Adelaide High School expansion
Adelaide Oval demolition/expansion
Alienated Park Lands
Australian Heritage Strategy
Biodiversity and dilapidation surveys
Britannia intersection
Brownhill/Keswick Creek Stormwater Plan
Cirque du Soleil/Park 24 Event Venue
Dying elms and other trees; White Cedar Avenue; War Memorial Oak and Drive
Land grabs at Adelaide Oval, Bonython Park, Park 24, Railway yards, Riverbank
Lounder's boat-building shed
'Purple water' regime and damage
Riverbank 'Project' and \$40m footbridge
Royal Adelaide Show car parking
SACA, SANFL, AFL and Stadium Management Authority
World Heritage listing

Cover: Detail of Colonel William Light (1786–1839), *The Commencement of Colonization in South Australia, 1837* c.1837, Adelaide, Australia
Gift of Sir E T Smith 1890
Art Gallery of South Australia, Adelaide

Years ago the ACC rightly insisted that the Netball Association remove its administration from the West Park Lands. Since then administration offices have slipped into the Wine Centre, Next Generation and the North Adelaide Golf Club (now housing Golf SA). There has even been a proposal that Victoria Park's Heritage Grandstand open its doors to the Clipsal 500 administration!

Obviously, as well as trespassing buildings, extensive administration goes with Adelaide High School, the new Hospital, and the SA Health and Medical Research Institute building.

There is no widely held sense of the sacrosanct nature of the Park Lands. There are no elected champions of the Park Lands courageous enough to oppose the relentless, ignorant assault on the integrity of the Park Lands. Those representing Adelaide should be boasting loudly and frequently of the incomparable Park Lands. Parliament should expedite State Heritage listing and actively push for World Heritage.

Sadly, Labor and Liberal are dubious and nervous of such moves in case these give them hurdles to cross before chasing another populist but damaging development on the Park Lands.

It is left to us in APPA to enthuse people, the media and politicians and get them on board, so that we will not wear the shame of history as the generation that allowed the Park Lands to slip to extinction.

Ian Gilfillan

Season's
Greetings
The President and
APPA Committee
thank you for your
support during 2012
and wish you a
happy and safe
Christmas season
and a prosperous
New Year



Editorial

As this 175th anniversary year of William Light's 1837 founding of the City of Adelaide and its Park Lands draws to a close, we thank our members and friends, Park Lands protectors and contributors for their efforts and goodwill.

Especial thanks to Gunta Groves whose term on the Adelaide Park Lands Authority ends in mid February 2013. Gunta's advocacy for the Park Lands has been exemplary, giving the lead—all too seldom followed—as to what a management body might achieve if it were properly constituted.

We are grateful to the Art Gallery of South Australia for their kind permission and assistance with reproducing, on the cover of this issue, William Light's sublime watercolour, *The commencement of Colonization in South Australia, 1837*, and for permission to publish detail from William Light's self-portrait which readers can find in colour on the centre opening. Light's depiction of the vista that inspired his selection of the site of Adelaide can be considered to be the birth certificate of the City of Adelaide's Park Lands.

As a statement of intent by the creative genius, it records the landscape as Light saw it, looking eastwards towards the hills from Park Lands between North Terrace and the River Torrens (opposite the Newmarket Hotel). In a short space of time Light was protecting the Park Lands he depicted from being misappropriated by government, becoming the first protector of the Park Lands, aided and abetted by the Resident Commissioner, James Hurtle Fisher.

Thanks to the assistance of Dr Keryn Walshe and volunteers of the South Australian Museum, in this edition we are also able to bring you a special exhibition of artefacts salvaged from this area, unearthed by builders working on the Park Lands Railyards (New RAH) site.

Boycott of Cirque du Soleil Western Park Lands performances

APPA thanks all members, Park Lands protectors and supporters who have indicated their intention to boycott Cirque du Soleil, as well as urging relatives and friends to join the boycott.

Thanks to SNAP Printing, Frome Road Adelaide

A heartfelt thanks to Gareth and Ian Monro and the team for their professional, patient and expert assistance for the 2012 editions of *Park Lands News*.

continued from p2

Thanks are also due to the National Archives of the UK for permission to publish original works of art by William Light and Henry Nixon, from their collection, and to each and every contributor. Many thanks for assisting with bringing together environmental material on various aspects of sustainable development and Park Lands environment for this issue, in conjunction with illustration of Light's genius.

With the release of the Mount Lofty Ranges agrarian landscape World Heritage feasibility study and its predictions of economic benefit to the state it seems timely to revisit the proposal for World Heritage nomination of Light's Plan and the Adelaide Park Lands.

As the government digs SA deeper into debt with Park Lands, and other, pet projects, its clear Light's Benthamite Plan for Adelaide and its Park Lands is the most cost effective international brand available. Nothing else has the power to deliver an integrated economic, environmental and social strategy for future-proofing South Australia.

We hope the Premier and Lord Mayor attend to the world's Millenium Goals on sustainable development, <http://www.un.org/millenniumgoals/enviro.html>, and invite them to make a joint New Year's resolution to develop a 'William Light's Plan and Park Lands' World Heritage nomination.

-Ed.

If we can provide our countryside with World Heritage status, it would represent a singular, strategic determinant of regional competitiveness unrivalled in Australia.

*Professor Randy Stringer
University of Adelaide, 2012*

STOP PRESS

A Cirque du Soleil missive delivered to local letter boxes puffs about 'plenty of on site parking for our patrons with traffic management in place to ensure minimal disruption to the surrounding area.' By 'on site parking' Cirque du Soleil really means an ACC UPark Park Lands carpark. It seems 'minimal disruption' and 'traffic management' is Cirque's take on closure of 100% of family parking on the Park Lands section of Sir Donald Bradman Drive. Enquiries ticket@cirquedusoleil.com, Toll free event hotline number:

0011 800 1 548 0000

12pm-12am 7 days (from Dec 6)
Or contact ACC Customer Centre on
8203 7203.

Park Lands bouquets

The APA Group (APA), described as Australia's largest natural gas infrastructure business, deserves thanks for cancelling its mooted 8 month occupation of Park 21 (cnr Sir Lewis Cohen Ave and Greenhill Rd) for a gas main replacement works depot. Top marks for showing how its done!

SA Parliamentarians (the AYES have it)

Rachel Sanderson MP, State Member for Adelaide, for tabling in the House of Assembly (17 October 2012) the original motion to disallow the *Development (Riverbank Footbridge) Variation Regulation 2012*. The Hon Michelle Lensink MLC, for tabling Rachel Sanderson's motion in the Legislative Council (Thursday 29 November 2012), carried by the State Opposition, Greens, and some Independents:

AYES (11)

Bressington, A
Dawkins, JSL
Franks, TA
Lee, JS
Lensink, JMA
Lucas, RI
Parnell, M
Ridgway, DW
Stephens, TJ
Vincent, KL
Wade, SG

NOES (10)

Brokenshire, RL
Darley, JA
Finnigan, BV
Gago, GE
Hood, DGE
Hunter IK
Kandelaars, GA
Maher, KJ
Wortley, RP
Zollo, C

Majority of 1 for ayes. Motion carried.

Maroonhood native orchids discovered

On 13 August 2012, as part of Adelaide City Council's ongoing commitment to the natural flora of the Adelaide plains, biodiversity staff discovered an orchid specimen within the Adelaide Park Lands. This orchid was identified as *Pterostylis pedunculata* (Maroonhood orchid). This plant was discovered in Park 16 and will be managed and protected as a part of Adelaide City Council's ongoing biodiversity program.

*James Walsh
Sustainability Advisor
Adelaide City Council*



Above: Adelaide Park Lands Maroonhood orchid (Pterostylis pedunculata). Photo courtesy of Adelaide City Council, 13 August 2012.

Editor's note:

Native orchids often require native bees or fungal gnats for pollination. They can be destroyed or damaged by larger European bees attempting pollination.

If you would like to keep in touch with what the APLA Board is dealing with each month, please contact Gunta Groves at <ggroves@chariot.net.au> or telephone 8336 8424 and you can receive a monthly newsletter.

NEXT NEWSLETTER COPY DEADLINE:

25 January 2013

Always in search of pithy articles, educational information and comment on current issues

Mozzie menace: 5000 victims a year

With a series of wetlands promised in the South Park Lands by Adelaide City Council, it's timely to report that a Sydney magazine article by a university lecturer reveals that more than 5000 Australians a year are struck down by mosquito-borne disease, mostly caused by the Ross River and Barmah Forest viruses.

Mozzies delight in stagnant water ecosystems, which is exactly what the above mentioned swamps will be on Parkside's northern boundaries.

Cameron Webb, a clinical lecturer and hospital scientist at the University of Sydney, says in a Conservation

Media Group magazine this month that urbanisation will bring with it an increase in the activity of zoonotic diseases (passed to humans by animals) by disturbing local ecosystems and biodiversity. Which description fits those Park Land ponds to a tee. Mr Webb says that in residential areas close to wetlands (a cosy cover-up title for swamps) it isn't just the increasing number of mosquito bites that are the problem. A lack of awareness among residents about the health risks posed may also increase the rate of disease.

In constructed wetlands designed to catch and store stormwater runoff,

mosquito control can be problematic, and local authorities (that's YOU, Adelaide City Council!!!), should ensure that there are guidelines for reducing suitability for mosquitoes, with adequately funded management plans to ensure that wetlands are clear of overgrown vegetation and sediment that may increase the pest population.

Mike Hudson

Republished with permission from the personal website of Cr Mike Hudson Parkside Ward Councillor, Unley.

<http://grumpyinunley.wordpress.com/>

Branding the (Adelaide) Park Lands

In December 2009, the Adelaide Park Lands Authority Board (APLA) voted to engage a consultant to prepare a marketing plan for the Adelaide Park Lands. The plan's primary objective was to identify appropriate marketing initiatives for the next three years to 2012. The stated primary outcome was to raise the profile and increase visitation of the Adelaide Park Lands.

In August 2010, APLA resolved to proceed with the plan's first four priorities:

- development of a dedicated Park Lands website;
- development of creative artwork that can be applied to all Park Lands advertising opportunities;
- advertising in the print media to promote opportunities and events in the Park Lands, and
- development of an Adelaide Park Lands pocket guide.

By February 2011, consultants had crystallised the marketing strategy into the main 'branding' message—'The Park Lands. Adelaide's breathing space' and work commenced on a timeframe for implementation of the branding message.

The August 2011 APLA meeting saw a presentation of revised branding concepts from NickNack Branding because its market research indicated changes were required.

By now the branding consisted of 'The Park Lands' with a stylised two-leaf design, plus tag lines for particular situations, such as 'Adelaide's breathing space', 'Adelaide's play space', and 'Adelaide's fitness space'.

Signage, website, pocket guide and poster layouts were presented to show how the final preferred logo might be used.

As of September 2012, the Park Lands website was operational at:

<http://adelaideparklands.com.au>

The Park Lands pocket guide is now available from the Adelaide City Council, and consideration is being given to registering a mobile phone application (My Parx) that promotes the Adelaide Park Lands.

Strangely, the marketing experts omitted the word 'Adelaide' from the branding material, a curious oversight for a destination marketing and branding campaign seeking to increase exposure and visitations to arguably Australia's most prominent parklands.

APLA subsequently made a recommendation to the ACC that the Park Lands branding material be amended to include the word 'Adelaide'.

The ACC has since endorsed a redesigned Park Lands logo incorporating the word 'Adelaide'.

Members of the Adelaide Park Lands Authority Board are to be commended for their branding and marketing initiatives. Although the budget from the ACC is a small one, it is nevertheless an important first step in increasing awareness and respect for Adelaide's unique and priceless asset.

Philip Groves



Above: The Adelaide Park Lands logo. Adelaide Park Lands Authority (APLA) Agenda, 11 August 2011.

Editor's Note: According to City Messenger, 6 December 2012, Councillor Henningsen said unapproved Council Administration expenditure of \$140,000 to counter negative media on ACC's Smart Move transport strategy was 'spin' and 'an absolutely scandalous waste of ... ratepayers' money'.

On the APLA logo, APLA Agenda, 12 July 2012, p159:

Options A and B present a simple and professional image for the governance and administrative functions of APLA, as differentiated from the logo/brand for the public face of the Park Lands ... The use of lower case lettering in Option A provides a contemporary appearance, with the rounded letters, sympathetic to the Park Lands brand and the notion of nature, creating a gentler feel. At the same time however, the design also commands a sense of confidence suitable to the Authority's status and purpose.

Below: Adelaide Park Lands Authority logo options A, B, C, APLA Agenda 12 July 2012. Option A (far left) was chosen.

Option A



ACC Park Lands car park capers

Friday, 8 December 2000, and a news release from the office of The Hon Mike Rann MP, State Labor Opposition Leader famously stated 'We want Adelaide to be known as a city in a park ... not a city in a car park'.

We are still waiting, after 12 years of hard Labor, for any of ex-Premier Rann's extensive list of promises and undertakings concerning the protection of the Adelaide Park Lands to be fulfilled.

Now appointed by the Federal Labor Government to the position of Australian High Commissioner in London (please note the government claimed this was not a job-for-the-boys appointment), Rann will be ideally placed to see how the great parks of London are respected and managed, and lament what might have been in Adelaide.

Segue to The North Adelaide Society Inc's September 2011 meeting where Lord Mayor Stephen Yarwood spoke to Society members in a wide-ranging 40-minute presentation. The Society's November newsletter (Number 165) quoted the Lord Mayor on the Adelaide Oval development:

I am furious and heartbroken that there will be cars on the Park Lands... We are a level of government, not a lobby group. But we got the best outcome. In time there will be no cars on the park lands: that's my commitment to you.

The Lord Mayor's commitment on Park Lands car parking is demonstrably a Clayton's commitment, proving he can out-Rann Rann over protection of the Park Lands. The hoisting of the white flag at the Adelaide Oval by the ACC sees hundreds of permanent car parks being included in the redevelopment, with the revenue going to the Stadium Management Authority. Elsewhere in the Park Lands, more permanent parking has been approved or is proposed, and event car parking is proliferating on Lord Mayor Yarwood's watch. The following examples illustrate the point.

Cirque du Soleil event parking in Tambawodli (Park 24) next to Ellis Park

This Canadian circus company has an appalling past history of environmental vandalism in the Park Lands. Notwithstanding this, the ACC embraces the circus's return and, despite the proximity of nearby city street and private car parking for circus patrons, the ACC has approved 700 car parking spaces in the Park Lands adjoining the circus Big Top. This is not just 700 cars as a once-off. Rather, it is 700 cars multiplied by the number of circus performances between 6 December 2012 and 6 January 2013.

Adelaide High School (AHS) expansion

Once again, the ACC has supported further land grabs for the AHS. Each time, ACC has stipulated no further expansion would be allowed! The 2012-approved expansion incorporates permanent undercroft car parking and sees a new car park for 21 vehicles created to the west of the new building.

Pinky Flat car parking for November 2nd Test against South Africa

Once again, the ACC acquiesced to requests from SACA, Adelaide Oval Stadium Management Authority *et al* to open Pinky Flat for up to 500 cars daily. The message the ACC constantly reinforces concerning event car parking in the Park Lands is 'ask and you shall receive', irrespective of the park's Community Land Management Plan (CLMP) which, in the case of Pinky Flat, called for the phasing out of car parking.

'The Wiggles' event parking in Tulya Wodli/Bonython Park

On 29 November 2012, The Wiggles—a privately owned, multi-million-dollar enterprise—staged three performances at Adelaide's Entertainment Centre (AEC), Port Road, in the suburb of Hindmarsh.

In breach of Bonython Park's CLMP parking provisions, the ACC opened the park for use by patrons attending The Wiggles performances. A request from the AEC CEO to the ACC to allow parking in Bonython Park stated:

We understand that there will be costs involved in operating the car park and we are willing to enter into a commercial arrangement with Council to provide this valuable community service if required ... and we feel the staging of this event is in keeping with the Lord Mayor's vision for a vibrant city.

On the day of the event, the AEC CEO was on ABC radio exhorting patrons to use Bonython Park for car parking to avoid congestion around the centre. Describing throwing open the Park Lands for car parking to enrich multi-millionaires as 'a valuable community service' is abject nonsense.

In addition, this writer has personally checked all of the Lord Mayor's vibrancy detection devices in the city for 29 November and found no evidence of any vibrancy leaking from Hindmarsh to the City!

As summer comes to the Adelaide Park Lands and north winds blow, prepare for page one splashes from The Daily Crow (formerly known as *The Advertiser*) as it describes the Park Lands as dustbowls and wastelands, brought about in no small part by event parking approvals.

War Memorial Drive formalised car parking, west of Montefiore Road

Ever since anyone can remember, the ACC has turned a blind eye to hundreds of cars being parked on the verge of the road or carriageway. The carriageway and verge area are entirely Park Lands, and the unregulated car parking is mostly free all-day parking used by city workers.

Suddenly, the ACC Administration proposed to regulate and formalise ticketed parking for 425 cars along this roadway, which was established as a scenic War Memorial drive. ACC Administration has suddenly seemed to discover the existence of the *Australian Road Rules*, which designate parallel parking along a roadway, unless otherwise signed. All manner of safety and Park Lands preservation issues have now been identified by Council Administration, begging the question of why Council has been negligent in ignoring these issues ever since anyone can remember.

ACC documents reveal an 'application for development approval has been initiated, subject to receiving Council consent in its role as landlord'. Council is being coy about who has made the application, but there will be no prizes for guessing, given the area's location close to McAdelaide Stadium and the new RAH.

This is yet another attempt to annex Park Lands for private commercial purposes. It presents Lord Mayor Yarwood with an opportunity to stand up and be counted—just don't put your house on him doing so.

Philip Groves



Below: Indecent haste of ACC car park construction works prior to survey without Tree and Critical Root Protection Zones, eastern side of War Memorial Drive adjacent North Adelaide Golf Course, looking south-east towards the City. Photos taken by K Henderson, 8 December 2012.

Unsustainable secrets

It should be no secret that remnant native species are hanging on in many areas of the Park Lands—amazing survivors of the natural vegetation of the Adelaide Plains. As a member of the Property Council of Australia (SA Division), Adelaide City Council has been spectacularly ineffectual at advancing appreciation of the economic value of ecological systems, and opportunities to salvage the last 1% of Adelaide Plains grasslands. The vulgar view of Park Lands remnant native grasslands as valueless waste sites flies in the face of international Millenium Goals for sustainable development.

Bentham on secrecy

In the darkness of secrecy, sinister interest and evil in every shape, have full swing ... Where there is no publicity there is no justice.

'Constitutional Code, Book II, ch. XII, sect. XIV.'
The Works of Jeremy Bentham, published under the superintendence of ... John Bowring, 11 vols., (Edinburgh: Tait, 1843) vol. ix, p. 493.

Publicity is the very soul of justice. It is the keenest spur to exertion, and the surest of all guards against improbity. vol. iv, p 316.

Disregard for natural heritage pervaded the review of the Community Land Management Plans for the South Park lands with Council failing to provide biodiversity information approved by the Adelaide Park Lands Authority for public consultation. Without notice, the APLA-approved CLMP draft was altered, and released to the public. This drew deserved criticism from APLA Board Member Gunta Groves who pointed out staff had 'deleted biodiversity' from the CLMP.

Council and APLA Agendas fail to disclose the true extent of surviving remnant native vegetation in the Adelaide Park Lands. It cannot escape notice that large areas of remnant native vegetation Council have refused to map (native plant secrecy zones) coincide with Adelaide City Council's UPark Park Lands carparking operations, including in Park 22 for the Royal Adelaide Show.

Since (at least) 1998, Park 22 (between Goodwood Road and Anzac Highway) has been identified to Adelaide City Council as one of the most important remnant biodiversity sites in the Park Lands. Fortunately, with basic, inexpensive Global Positioning Satellite (GPS) mapping software individuals can now

continued on p 7

Right: The amended Community Land Management Plan for Park 22, Adelaide Park Lands Authority 6 December 2012, Agenda Item 5 with two areas with management direction to seek opportunities to achieve additional biodiversity outcomes in the broader area.



Right: Biodiversity and Water Quality Action Plan, mapping Park 22 medium quality native vegetation (orange) and poorer quality (pink) for Park 22, Adelaide Park Lands Authority, 6 December 2012, Agenda Item 5.



Below, left, centre and right: Park 22 Adelaide City Council UPark operated car parking during the Royal Adelaide Show. Parking is across native vegetation mapped at bottom with yellow tags and white areas.



BIODIVERSITY AREAS APPROVED BY APLA FOR PUBLIC CONSULTATION (marked in white); rectangular car parking area (blue)

'DELETED BIODIVERSITY' version released for public consultation by Adelaide City Council with nil biodiversity areas

Data records from an ACC-commissioned remnant native vegetation survey, large areas and many species recorded.



Above right: Detail from Park 22 Draft CLMP 'future desired character' map approved by the Adelaide Park Lands Authority (APLA) for public consultation. Source: APLA Agenda 10 May 2011, p154.

Above centre: Detail from ACC 'deleted biodiversity' CLMP public consultation version, with all APLA-approved (purple) biodiversity management areas removed. Source: ACC Draft Park Lands CLMP Chapter 5.

Above right: Mapping of Park 22 (triangle at bottom right) and southern Park 23 (triangle at upper left) remnant native vegetation from a single data source. Data source: Adelaide City Council 2004 Mallen survey data; mapped by K Henderson, December 2012.

'Minimal disturbance' a flying success

It was a great thrill to receive some special news from James Walsh, the Adelaide City Council's Sustainability Advisor. James had discovered the rare, Chequered (or Grassland) Copper butterfly (*Lucia limbaria*) at the now expanded Trees For Life Bush Care Site in Tuttangga (Park 17, near South Terrace). This is in addition to the initial discovery of this butterfly (*Park Lands News*, June 2011, p 8) in Victoria Park/ Bakkabakkandi on 21 February 2011.

In Tuttangga (and at other biodiversity sites) the gradual, skilful removal of weeds, using minimal disturbance methods, by the hard working Biodiversity Team and volunteer Bush Carers, enables remnant plant species to regenerate. This has included *Lucia limbaria*'s host plant, Native sorrel (*Oxalis perennans*). In addition, reinstatement of indigenous plant species of this 'Black Forest' (*Eucalyptus microcarpa* Woodland) vegetation community provides habitat for more butterfly and fauna species.

Once the remnant grasses had regenerated, the Common Brown butterflies (*Heteronympha merope*) returned to their larval food plants. It was there that one of these large and beautiful butterflies brushed my cheek while another flew between my legs.

What priceless assets are the flora and fauna to the Park Lands of Adelaide, and to their human visitors.

Janet Subagio

continued from p 6

do for themselves what the Corporation's multi-million-dollars of rate-payers' resources and several hundred staff have been unable to achieve. Published at left is the first of these 'Citizen Science' mappings, before the next Royal Adelaide Show or netball parking, foreign circus, sporting club, event, UParking operation, or other works, can damage further remnant native vegetation.

For the edification of APLA, Elected Members of Council, ACC UPark, Lutherans' netball, the Royal Agricultural and Horticultural Association Inc, ETSA and ElectraNet, future destruction by means of car parking, trenching, horticultural conceits, tree-planting, weed-infested mulching, recycled-effluent watering, fertilisers, herbicides and rubbish dumping will be carried out with the public knowledge that it is impacting on precious remnant native vegetation.

Kelly Henderson

The Common Brown (*Heteronympha merope merope*)

The females of the Common Browns are larger than, and look very different to, the males. Both males and females emerge from their chrysalis in early summer, but females go into hiding until autumn when they emerge again to start egg laying on new grass produced by autumn rains.

Butterfly Conservation SA Inc.
<http://sabutterflies.org.au/bcsa.htm>



Common Brown
Heteronympha merope - This widespread butterfly is common in the hills face zone and in the Adelaide suburbs. The caterpillars feed on native and introduced grasses. Wingspan - female 64 mm; male 56mm.



Chequered or Grassland Copper
Lucia limbaria - Rare, occasionally seen in undisturbed fringe urban areas, or in meadow areas and reserves. Caterpillars eat native sorrel. Wingspan 23-25mm.

Above: Copper or Grassland Butterfly, see http://www.samuseum.sa.gov.au/assets/files/whatson/exhibitions/butterfly/butterfly-id_brown-orange_md.pdf. Fact sheet available from www.butterflygardening.net.au/PDFs/factsheets/ChequeredCopper.pdf. Top: Common Brown Butterfly, see http://www.samuseum.sa.gov.au/assets/files/whatson/exhibitions/butterfly/butterfly-id_brown-orange_sm.pdf. Fact sheet available from www.butterflygardening.net.au/PDFs/factsheets/CommonBrown.pdf. For information on the five butterfly families see <http://www.butterflygardening.net.au/butterflies/index.htm>. Images, information and fact sheets courtesy of Butterfly Conservation SA Inc.

Scraping the surface

We could give the Park Lands a helping hand with natural regeneration, just by scraping away surface weedy areas, assisting vast reservoirs of seeds in the subsoil to naturally regenerate and get the upper hand once again.

The area where this trial is carried out should be relatively flat.

Darrell Kraehenbuehl AM

Editors note:

Werribee Open Range Zoo, is in an area west of Melbourne 'once covered by vast grasslands'. They scraped back top soil heavily infested with Carpet Weed (*Galenia pubescens*) to reduce weed load. 'Fact Sheet: A Grassland Haven', *Gardening Australia* (Series 23 Episode 34, 1/12/2012), ABC 2011.

What's it for?

At a conservation site in Wikaparndo Wirra (Park 22), hardly noticeable in among remnant understorey plants of the Mallee (*Eucalyptus porosa*) Woodland, TLC is assisting regeneration of a small, remnant herb species with a big name, Wingless bluebush (*Maireana enchylaenoides*). *Maireana enchylaenoides* has a Conservation Status of Uncommon in the Southern Lofty Botanical Region. Minute, bisexual yellow flowers are followed by relatively large, curiously shaped fruits.

Who can tell us about the ecological role of this plant?

A count of 97 plants (now accompanied by many seedlings) makes it one of the largest known occurrences of this plant species in the Park Lands.

Janet Subagio

Park Lands digs

On 3 September 2009 the Adelaide Park Lands Preservation Association Inc. lodged a new State Heritage nomination of the Park Lands, recommending the Park lands be protected as an archaeological site.

Urgent provisional entry on the State Heritage Register was sought for areas facing imminent threat, including Light's Camp in the Park Lands Railyards opposite the Newmarket Hotel, between North Terrace and the River Torrens. This site was occupied by William Light, the Resident Commissioner James Hurtle Fisher from early 1837. Settlers arriving

set up tents on the ground sloping down to the River bank and witnessed territorial battles in the vicinity.

Copies of APPA's State Heritage nomination were provided to Adelaide City Council staff and several Elected Members accompanied by supporting material sourced from independent studies, research reports, observations and recommendations.

Adelaide City Council have long known the Park Lands contain relics and artefacts that can date back to the city's earliest days. Council dumps in the Park Lands have previously yielded a rich

continued on p 13

South Australian Gazette and Colonial Register.

GOVERNMENT NOTICE.

COLONIAL SECRETARY'S OFFICE,
14th May, 1838.

PARTIES having now acquired possession of their Country Sections, the Government considers that there no longer exist any necessity for appropriating the Park Land to purposes so foreign to which they were originally reserved for :

Notice is therefore hereby given, to those persons who are at present occupying portions of the Park Land, that the Government requires them to remove therefrom, at or before the expiration of Two Months from this date; and that in default of such removal, a weekly *increasing* ground rent (to be assessed by officers to be appointed for that purpose,) will be charged for the Land they occupy.

Permission will not in future be given to occupy the Park Land, nor shall any existing tenement be reinhabited upon its present occupant quitting. And parties carrying on any works that are destructive to the Land ... are expressly warned that on the expiration of Two Months they will on no account be allowed to continue such works...

**By his Excellency's command,
T. BEWES STRANGWAYS,**
Colonial Secretary pro tem.

South Australian Gazette and Colonial Register,
19 May 1838, p 1.

GOVERNMENT ORDER.

(No. 9.) COLONIAL SECRETARY'S OFFICE,
August 17, 1838.

NOTICE IS HEREBY GIVEN that in conformity with the preceeding order in Council, all persons occupying the Park Lands will be required to remove therefrom on or before the 15th day of November next ensuing, and that persons remaining thereon after that day will be dealt with and proceeded against as wilful trespassers.

By His Excellency's command,
W. NATION,
Chief Clerk, Colonial Secretary's Office.

South Australian Gazette and Colonial Register,
18 and 25 August 1838, p1.

GOVERNMENT NOTICE.

(No. 10) COLONIAL SECRETARY'S OFFICE,
Adelaide, September 8, 1838.

IT having been reported to the Government that the trees on the park land are daily being destroyed by parties occupying dwellings thereon ... his Excellency the Acting Governor directs it to be notified, that all parties offending from this date will be prosecuted for misdemeanor: and all constables and peace officers are hereby directed to use their utmost exertions in preventing such injurious practices, and in bringing parties so offending to justice.

By His Excellency's command,
W. NATION,
Chief Clerk, Colonial Secretary's Office.

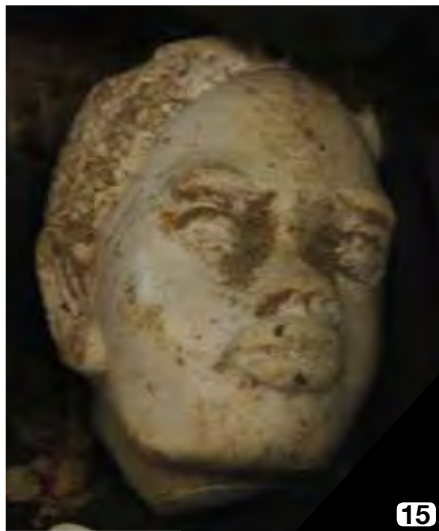
South Australian Gazette and Colonial Register,
8, 15, 22 and 29 September 1838, p1.

Index to artefacts on page 9

Depicted on the facing page are a few of the thousands of Park Lands artefacts unearthed by building contractors in the Adelaide Park Lands during excavation of the Railyards (New RAH) site, North Terrace. Salvaged by the South Australian Museum, some items were displayed during History Week 2011. Thanks to Dr Keryn Walshe and John Hughes.

- 1A. Broken bottle found containing a Victorian-era c1870s gold earring inset with a ruby.
- 1B. Detail of front of gold earring with square ruby at the centre of a gold five-petalled flower hung below a tier of two (decreasing in size) upwardly rolling leaves; six-petalled flower decorates the base of the hook.
- 1C. View of reverse side.
- 2A. W Baker & Co English pottery c1860s; 'Jessemine' pattern stamp.
- 2B. Detail of W Baker & Co 'Jessemine' pattern stamp.
3. Ship's crockery; mark on plate's base depicts a square-rigged sailing ship at sea encircled by the name 'Acadia' (built in Glasgow in 1841; sailed the UK to America route in the 1840s).
4. Clay pipes.
5. c1860s English pottery chamber pot with blue base mark 'BERRY & GALL, 83 RUNDLE ST ADELAIDE'.
6. c1860-1870 English pitcher pottery.
7. Stone implements: hammer stones and stone flakes.
8. Blue willow pattern serving dish, c1860-1890.
9. Hindmarsh Pottery; the smaller bottle in front is from the first batch manufactured by the company at Hindmarsh, 1838.
10. American glass bottles: square (left) 'Florida Waters, NY' (New York); (right) sarsparilla bottle, NewYork.
11. Various bottles: (standing) c1850s-1880s ginger beer, wine / champagne seem the commonest); (lying in foreground) Maugham's patent round-ended bottles, including rare early Maugham's Patent Carrara, and examples of J Lewin, Crowder (1865), Hall and Sons, Norwood, and Billin and Wright, Flinders St Adelaide.
12. Maugham's patent round-ended bottle, these were designed to ensure they were stored lying down.
13. Hamilton (Torpedo) bottles, c1860s.
14. German porcelain 1860-1880, 'Frozen Charlotte'. Based on American story of a little girl who went out in the snow inadequately dressed and froze to death. Left: collector's example; right: Park Lands artefact.
15. Clay pipe bowl, human head shape.

Photo no. 7, © Keryn Walshe, February 2012; nos. 11, 13 © Keryn Walshe, September 2012. Courtesy of Keryn Walshe. Photos 1A-C, 2A-B, 3-6, 8-10, 12, 14, 15 © K Henderson, December 2012.



Surveying world heritage



Above: Detail of Colonel William Light (1786–1839); self portrait, c1839, Adelaide; oil on canvas, 58.1 x 42.2 cm; Gift of G.G. Mayo on behalf of his father, the late George Mayo, F.R.C.S., 1905. Courtesy of the Art Gallery of South Australia, Adelaide.



Left: Light's Statue, Montefiore Hill, Park Lands, North Adelaide. Photo taken by K Henderson, 16 December 2012.

Right: Hammerfest Struve Geodetic Arc World Heritage Site, <http://whc.unesco.org/en/list/1187/>. Image from 'Surveying World Heritage: Struve Geodetic Arc and William Light's Plan of Adelaide' Public Forum flyer, 6 May 2010.



Below: Professor Jan De Graeve, Director of the FIG IHS&M, examining William Light's Dumpy Level in the Rooms of the Royal Geographical Society of South Australia, North Terrace. Photo taken by K Henderson, 4 May 2010.



Key principles evident in William Light's sensitive urban and regional plan remain relevant today, as an exemplar for sustainable development of outstanding universal value:

- distilled from centuries of interchange of ideas on settlement and planning, from Vitruvius to Jeremy Bentham;
- a physical manifestation of the genius of Bentham, Light, and others, and
- a model for the future, if we are to achieve the world's 2015 Millennium goals for sustainable development.

According to Vitruvius (c80-70BC–c15BC, Roman writer, architect and engineer), Order, Arrangement (locating things in their proper places), Eurythmy, Propriety, Symmetry and Economy (proper site and materials management and thrifty balancing of cost and common sense in constructions) are the fundamental principles of architecture. For instance, siting a hospital on the opposite side of the City to prevailing winds (south-westerlies in Adelaide) respects time-honoured principles of healthy planning. Jeremy Bentham (1748–1832, renowned English philosopher and 'the Legislator of the World') voiced an essential constraint on government in Light's lifetime—the aim of 'government for the greatest good', equally relevant today.

Former Federal Foreign Minister Alexander Downer's April 2012 prediction of South Australia spiralling towards dire worse-than-State-Bank-debt levels by 2015–16 makes it clear the Railyards hospital heralds deficit—as well as Park Lands—doom. NRAH, SAHMRI, Riverbank, Adelaide Oval and Victoria Square breach cost and common sense principles known since Vitruvian times. Discarding knowledge and principles of previous generations is neither 'progress', nor sustainable. On 7 December 2012, *InDaily* Opinion reported

Where Rann and Foley were derided as arrogant and out of touch, Weatherill and his cohorts are seen as incompetent and furtive.

Whilst we may sympathise with Premier Weatherill and Lord Mayor Yarwood for inheriting regrettably 'disrespectful' and 'disastrous monolithic buildings' like the National Wine Centre, David Lloyd Leisure Centre, and the 'unneighbourly' 'bully boy' Convention Centre, there can be no sympathy for more of that ilk on their watch, 'too close to the water, too tall, too bulky and ... to the detriment of the Park Lands',¹ Former Lord Mayor and State Member for Adelaide, Dr Lomax-Smith, noted 'there was consultation with the council and the public but only after the buildings had been designed.'² Premier Weatherill and Lord Mayor Yarwood

can have no excuse for unsustainable projects that dig the state deeper into debt, ignoring public outcry, whilst World Heritage benefits beckon. Three levels of government have been in denial about World Heritage (WH) nomination of Light's legacy. Despite this, the WH campaign to win the Premier a cost effective (!) internationally recognisable brand, and secure the City of Adelaide membership of an elite international forum—the Organisation of WH Cities—received further impetus from a recent University of Adelaide WH feasibility Study of the Mount Lofty Ranges. This identified significant potential economic benefits.

According to Professor Stringer, seeking WH status is 'a no-lose proposition, whether or not it succeeds.'³ The Study confirmed Wakefieldian 'systematic colonization' can form a strong basis for WH nomination. This is equally applicable to Adelaide's case, and was part of the 2010 brief seeking the involvement of the International Federation of Surveyors (FIG). The FIG had succeeded with their Struve Geodetic Arc WH listing project, UNESCO's first surveying inscription.

To recap, Professor Jan De Graeve, Director of the (FIG) International Institute for the History of Surveying and Measurement (IHS&M), visited Adelaide in 2010, at the invitation of the Surveyors of South Australia, and he:

- studied the Archives and identified various original instruments;
- explained procedures for submitting a case to UNESCO and gave a public lecture on Struve Meridian, the first surveying heritage inscribed on the World Heritage List;
- was introduced to the Lord Mayor of the City of Adelaide, met with Rachel Sanderson MP, State Member for Adelaide and other Members of the South Australian Parliament, and attended Parliament's opening, and
- had a two hour audience with His Excellency Rear Admiral Kevin Scarce, AC CSC RANR, Governor of South Australia.

In 2012, in Rome, Italy, he reported on his visit and on Light's Plan of Adelaide World Heritage nomination proposal to the FIG 35th General Assembly Working Week.

Kelly Henderson

1. 'They're my three failures, says Jane', *The City Messenger*, 1 September 1999, p3. 2. Ibid. 3. 'Study supports Mount Lofty Ranges World Heritage bid, Media Release, 1 June 2012, <http://www.adelaide.edu.au/news/news53202.html>; R Stringer et al, *Exploring UNESCO World Heritage Site listing for the Mount Lofty Ranges agrarian landscape*, University of Adelaide, 2012; <https://www.box.com/s/d7dc985efd585a3df6b7>.

A. The hill between the dark
 bearings for this sketch
 B & C The Town Adelaide
 D The proposed settlement
 E A large hill at the harbour
 The dark green around the Town
 proposed to the Resid^l Commissioner
 to be reserved as Park grounds



Above: Detail of Sketch of the site of Adelaide, c Feb 1837, Colonel William Light (1786–1839), watercolour on paper, Adelaide, South Australia; top left: detail of William Light's handwritten annotations on his Sketch, showing 'B & C The Town Adelaide' and 'The dark green round the Town I proposed to the Resid^l Commissioner to be reserved as Park grounds'. Reproduced by courtesy of the National Archives of the UK. CO 700/SOUTH AUSTRALIA2/1. Above left: Dr Lynn Arnold AO, the Association's Patron, presenting Professor Jan De Graeve with a copy of William Light's 1837 'Sketch of the site of Adelaide'. Photo taken by K Henderson, 7 May 2010.



Below: Detail based on Plan of the Preliminary Country Sections in the District of Adelaide, South Australia, from the Surveys by Colonel W^m Light Esq^r Surv^r Gen^l and Assistant Surveyors. Drawn by Henry Nixon late Lieutenant 96th Regiment; below left: detail of Plan of the Preliminary Country Sections showing the Port of the City of Adelaide. Reproduced by courtesy of the National Archives of the UK. CO 700/SOUTH AUSTRALIA2/Pt1 (4), as amended by K Henderson, 2008.

Above: His Excellency Rear Admiral Kevin Scarce AC CSC RANR, Governor of South Australia, with Professor Jan De Graeve, Director of FIG IIHS&M; audience at Government House, North Terrace, Adelaide. Photo taken by K Henderson, 6 May 2010.





4



1



2



3

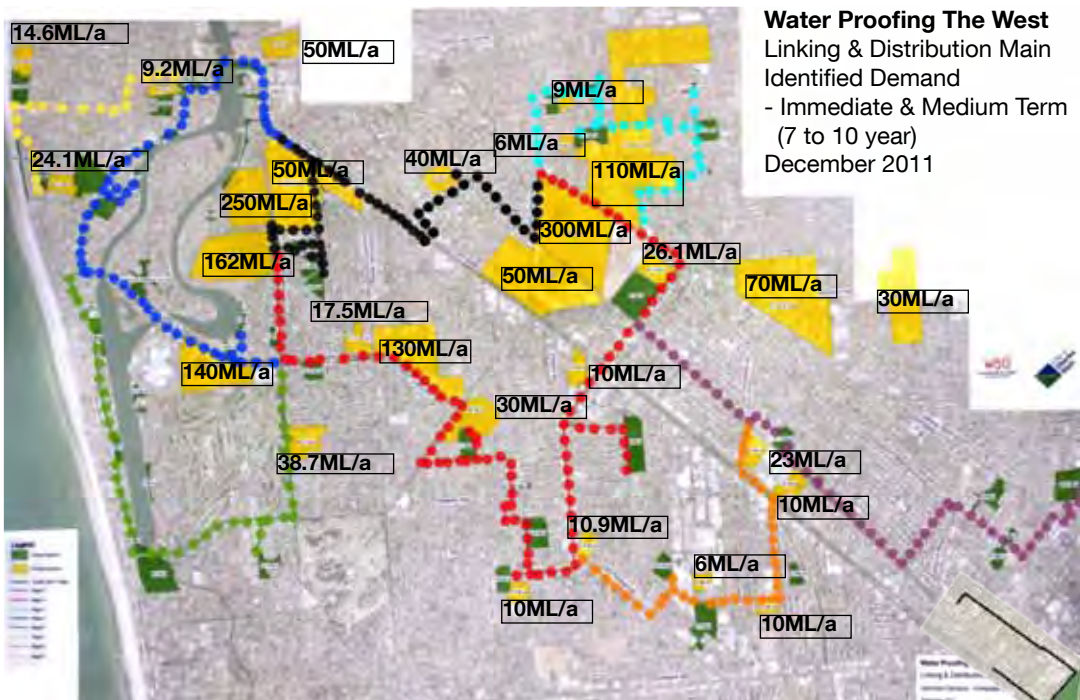


5



6

Water pilfering: the west



- Legend**
- Council Irrigation
 - Private Customers
 - Transfer Main - Stage 1
 - Stage 2
 - Stage 3
 - Stage 4
 - Stage 5
 - Stage 6
 - Stage 7
 - Stage 8
 - Stage 9

Proposed Pump house, Bonython Park, Park Lands X

Park Lands digs

continued from p 8

return of historic finds, most notably during excavation of the stormwater drain in Park 23 (south of Sir Donald Bradman Drive).

As a site of aboriginal battles, burials and ceremonies the banks of the River

1. Remnant native grass *Chloris truncata* (Windmill Grass), Park 24 plateau, now constructed upon by Cirque du Soleil.
2. Exotic Road Plant (*Ignoramus circus var canadienne*) invading Park 24 remnant native vegetation (foreground).
3. Preparation of the Cirque du Soleil site, for over an hectare of bitumisation.
4. Blind-sided by a rogue Cirque du Soleil shipping container. Traffic exiting Park 24 and Park Lands Trail south to Sir Donald Bradman Drive have their vision of traffic streaming off the Hilton bridges blocked by a Cirque du Soleil shipping container-cum-advertising-hoarding.
5. 'Just not cricket'. Adelaide City Council UPark toll booths in Park 24, north of Sir Donald Bradman Drive charge for Park Lands car parking whilst nearby on-street bitumen carparks are closed to the public.
6. Adelaide City Council operated UPark in Park 24, during Cirque du Soleil performance.

Photos taken by K Henderson: no.1 (2011); no. 2 (October 2012); nos. 3–6 (December 2012).

Torrens are also expected to be of cultural and archaeological significance, layered above with items associated with the temporary habitations from the earliest years of European settlement.

As John Stuart Mill noted, South Australia was founded on entirely new principles. One of these was 'no settlement prior to survey'.

Whilst awaiting completion of the survey, settlers erected makeshift habitations, ranging from small tents and rude huts to the substantial establishment of the Land and Survey Offices and William Light and James Hurtle Fisher's Park Lands residences, depicted in William Light's watercolour *The commencement of colonization in South Australia, 1837*.

Kelly Henderson



Top: Holloway's ointment, and a glass syringe, from the Adelaide Park Lands Railyards (New RAH) work site.

Below: View from Light's Vision. Photo taken by K Henderson, December 2012.



Once upon a time the City of Charles Sturt had a stormwater management project named the 'Port Road Rejuvenation Project'. This changed its name to 'Water Proofing the West—Stage 1'.¹ As recently as 14 June 2011, this was discussed in an open Council meeting when receiving an aborist report on removal of 110 trees (including 28 Significant Trees).² Charles Sturt Council confirmed it was committed to 'an extensive landscape upgrade ... with 1172 trees, including 450 large tree species (River Red Gum, SA Blue Gums and Spotted Gums)'.³

The Australian Government commenced a competitive grants round in October 2009. On 2 November 2009, Senator the Hon Penny Wong announced '\$86 million

Left: City of Charles Sturt 'Water Proofing the West'—Stage One Project; map of the Linking and Distribution main network, December 2011. Irrigation of Council parks (marked in green) and for Private Customers (marked in yellow). Based on *Water Proofing the West mapping*, Walbridge and Gilbert/Charles Sturt Council, December 2011.

for stormwater harvesting and reuse' whilst visiting Cheltenham with the then Premier Mike Rann.⁴

The City of Charles Sturt was allocated \$20 million for its Water Proofing the West—Stage One project:

*Involves developing infrastructure capable of capturing, treating and supplying stormwater to replace potable water for irrigation and industrial use. To offset approx. 555 million litres/year.*⁵

Commercial take from the Torrens

Rather than 'capturing stormwater' the project intends to:

- construct a pumping station in Bonython Park, Adelaide Park Lands on the Reiver Torrens' north bank;
- pump water uphill to take it out of the Torrens Catchment and into the Port River Catchment, thence to run downhill through Charles Sturt Council to Port Adelaide/Enfield Council areas;
- to sell the majority of the water, commercially, to 'private customers'. A major 'private customer' of the City of

Charles Sturt water sales business would be the Cheltenham Park Racecourse/ St Clair development, for a 'sustainable sanctuary in the making':

*St Clair will be Adelaide's first large scale, inner metropolitan 'water-wise' residential address with aquifers creating an evergreen landscape and waterways fed by the Torrens River*⁶

St Clair is marketed as 'Waterside Premium Land', 'exclusive lots with panoramic lagoon and waterway views' for 'living in a parkland oasis'.⁷

Your own little exclusive piece of the Torrens, pumped direct to your door.

Kelly Henderson

1. <http://www.charlessturt.sa.gov.au/page.aspx?u=610>.
2. City of Charles Sturt Council Meeting 14/06/2011 Agenda Item 6.109.
3. Ibid.
4. http://www.climatechange.gov.au/~/_/media/Files/minister/previous%20minister/wong/2009/media-releases/November/mr20091101.pdf.
5. Ibid.
6. <http://stclair.net.au/index.php/about/environment>.
7. <http://www.stclair.net.au/>.

Carbon fraud and tree deceit

Research on carbon cycles in trees by world-leading expert Ernst Detlef-Schulze (Max Planck Institute for Biochemistry) among others, has exposed the tree deceit and carbon fraud of politicians and government-funded 'green' organisations.

In 2006, Gerald Traufetter's article 'Planting Trees to Atone for our Environmental Sins'¹ observed that:

'Telling people to plant trees makes about as much as sense as suggesting they drink more water to offset rising sea levels,' says Oliver Rackham, a historical ecologist at Cambridge University.

Ernst-Detlef Schulze, a director at the Max Planck Institute for Biogeochemistry ... is one of the world's leading experts in the study of carbon cycles in trees ... and arrives at a sobering conclusion for a typical tree growing outdoors in a moderate climate: "It would have to be at least 60 years old before it became a net consumer of carbon dioxide from the atmosphere."

... a typical tree ...

'would have to be at least 60 years old before it became a net consumer of carbon dioxide from the atmosphere.'

Ernst-Detlef Schulze, Max Planck Institute for Biogeochemistry

Schulze's work highlights a fact that is too often overlooked: Although a tree absorbs carbon dioxide from the atmosphere through its leaves, it also releases the carbon stored in the ground from its roots when it absorbs nutrients. This is especially true of younger trees. Whether a tree will actually last 60 years or be harvested much earlier is something no one can predict.

"Reforesting the world," says Schulze, "is unlikely to save us."

Burnside City Council's Biodiversity Strategy grasps the fact that the environment provides services saving ratepayers funds.

These services include the maintenance of the gaseous composition of the atmosphere, control of regional climates, generation and maintenance of soils, waste disposal, nutrient cycling and pest control.

JH Lawton and VK Brown, 'Redundancy in Ecosystems' p 266 in *Biodiversity and Ecosystem Function*, 1994.

Telling people to plant trees makes about as much sense as suggesting they drink more water to offset rising sea levels

Oliver Rackham, historical ecologist, Cambridge University, UK

Million Trees program, Park Lands

Digging up and destroying cost-free carbon-sequestering remnant native grassland species and soils is wasteful, and unsustainable. Unlike Burnside's recognition of natural services, Adelaide City Council removes remnant native vegetation as a partner of Rann's Million Trees program. These ill-conceived activities litter the Park Lands with weed-infested political plantations, increasing carbon cost:

- soil disturbance and damage, releasing soil carbon;
- removal of carbon-sequestering native grasses and replacement with carbon-generating young trees;
- carbon cost of tree planting materials, weed-infested mulch, volunteers, etc.

Transport tree fiascos

Hundreds of trees, planted with great fanfare in Bonython Park along Port Road, invested with thousands of volunteer hours of maintenance effort, lasted less than 6 years!

Road-widening and the tram extension, from City West to the Adelaide Entertainment Centre, ensured zero survivals, and replanting with young eucalypts, and now dead native grasses of non-Park Lands provenance (contrary to biodiversity principles and policy).

As part of that same tramline extension, the Department of Transport, Energy and Infrastructure (DTEI) also applied to remove 25 Significant trees from Park Lands between North Terrace and the former Railyards fence line.³ DTEI proposed to plant 50 semi-mature 'compensation' trees, two for every significant tree removed. The Development Assessment Commission (DAC) required DTEI to lodge a landscape plan identifying the location of these replacement trees 'prior to the operational use of the tram extension from City West to the Adelaide Entertainment Centre'.⁴

Adelaide Oval rubbery tree figures

On 8 December 1901 the Hons Lionel, Aubrey and Harold Tennyson each planted a *Ficus Australis* on the south-eastern mound of Adelaide Oval where two others had earlier been planted by their Excellencies Lord and Lady Tennyson. On behalf of the SA Cricket

Association, Sir Edwin Smith promised 'the trees would be kept alive'.⁵

Where are they now?

Unlike the SACA's transplanting of significant trees in their Oval expansion, DTEI takes the unsustainable route of kill and 'replace'. At the current rate of attrition in the tree-promise count (from 'about 350' now down to 'about 250'), DTEI is unlikely to plant any trees at all., but should be billed for the lifetime value of each tree removed.

On 3 November 2011 Chief Executive of DTEI, Rod Hook said he'd told a Parliamentary Committee about 55 trees would be removed of which 16 were Significant trees, 'but we will plant something like about 350' and 'construction teams will not be touching any tree that did not need to be knocked down to complete the upgrade'⁶ and reportedly he said more than 300 trees would be planted in the Oval precinct to replace those cut down.⁷

Lord Mayor Stephen Yarwood's absolutely sad comment to media on government destruction of significant trees at Adelaide Stadium? 'Not happy':

*It is absolutely a sad day when any tree gets cut down, let alone a significant one so it's not something we're particularly happy about.*⁸

On 1 August 2012, after ACC refused to cut down 40 trees (Pennington Park's White Cedar Avenue), Hook was reported as saying Government's plan was to plant 'about 250 extra trees'.⁹

Kelly Henderson

1. Gerald Traufetter, *Spiegel Online International*, 30 October, 2006, DER SPIEGEL 44/2006, <http://en.scientificcommons.org/55459679>; <http://www.spiegel.de/international/spiegel/the-climate-indulgence-market-planting-trees-to-atone-for-our-environmental-sins-a-445836.html>.
2. 'Managing Forests After Kyoto', *Science* journal, 22 September 2000, Schulze pp 2058-2059.
3. DA No. 020/0003/09, correspondence received by DAC on 18 December 2008, 28 January and 4 February, 2009.
4. DAC Agenda No 398, 12/03/2009, pp 3-4.
5. *The Advertiser*, 9 Dec 1903, p 5.
6. ABC 891 Adelaide, 3 November 2011, <http://www.abc.net.au/local/stories/2011/11/03/3354877.htm>.
7. ABC News, Interview by Ian Henschke, 3 November 2011, <http://www.abc.net.au/news/2011-11-02/significant-trees-to-go-for-adelaide-oval-upgrade/3615108>.
8. Ibid.
9. *AdelaideNow*, 1 August 2012, <http://www.adelaidenow.com.au/news/south-australia/tree-decision-leaves-adelaide-oval-parking-stuck-in-the-mud/story-e6frea83-1226440689887>.

Town Hall honour reality check

An ACC media release of 30 October 2012 announced Council had decided to remove Lance Armstrong's name from its Key to the City honour board.

The decision is apparently an 'administrative change that will see his name removed from the board and does not seek to physically retrieve the Key', says the release.

Despite his previous defence of Lance Armstrong, Lord Mayor Stephen Yarwood voted to remove the Armstrong name from the honour board, saying that Armstrong's actions haven't been honourable, thereby putting the Lord Mayor at odds with former premier Mike Rann, an Armstrong worshipper, who considers Armstrong to be 'an honourable man'.

The Lord Mayor was quoted in *The Advertiser* of 31 October: 'A decision has been made and it's time to move on'. No doubt the Lord Mayor (and members of the Weatherill Government) would like us to 'move on' from their appalling lack of judgment.

Doubtless, we will move on when ready to do so. In the meantime, just as the ACC has expunged Armstrong's name from its Town Hall honour board, it should clean out Bonython Park's Armstrong/Livestrong plaque and signage forthwith. The objects should then be forwarded to Australia's new High Commissioner in London as a reminder that his slavering admiration for Lance Armstrong will not be forgotten by South Australian taxpayers.

Philip Groves

Rebadging *Danthonia*

There are many species of the genus *Austrodanthonia* (commonly known as Wallaby grass) recorded in the Adelaide Park Lands, for example:

Austrodanthonia caespitosa
(Common Wallaby-grass)

Austrodanthonia carphoides var. *carphoides*
(Short Wallaby-grass)

Austrodanthonia eriantha
(Hill Wallaby-grass)

Austrodanthonia linkii var. *linkii*
(Leaf Wallaby-grass)

Austrodanthonia racemosa var. *racemosa*
(Slender Wallaby-grass)

Austrodanthonia setacea var. *setacea*
(Small Flower Wallaby-grass)

International collaborative research on this genus is set to change the genus name from *Danthonia* or *Austrodanthonia* to *Rytidosperma*.¹

The change has already been adopted in NSW, Tasmania and Victoria.

Kelly Henderson

1. Linder et al, 'Classification of Danthonioideae', *Annals of Missouri Botanical Gardens*, Volume 97 Number 3, 2010 p 306-364.



Above: *Austrodanthonia* sp.

Below: Ground-foraging amongst *Austrodanthonia* sp. Park 6, North Park Lands; photos taken by K Henderson, December 2012.



Top right: River Red Gum (*Eucalyptus camaldulensis*) in flower in Park 6, North Park Lands, near Kingston Terrace, North Adelaide. Photo taken by K Henderson, December 2012.

Did you know?

Most common Park Lands bi-annual flowering plant

River Red gums (*Eucalyptus camaldulensis*)

do not flower every year. Their small fruits

develop very slowly, taking them two years to flower again, hence they are bi-annual. Some of the Adelaide Park Lands River red gums are not due to flower until next season. For the ones flowering already, if you miss seeing them now you'll have to wait another two years.

Is there a 'Mo-poke' near you?

The Southern Boobook Owl (*Ninox novaehollandiae*, also known as the Mopoke) nests and hunts in Adelaide's Park Lands. Its call sounds like 'mo-poke'. Boobooks have been heard calling throughout (South) Adelaide, near West Terrace, around Hutt Street, and in the eastern Park Lands. Expect fledgling Boobook Owls to sound like crickets and emerge from their nest hollows in January.

Harming ants nests = harming native bats

Native bats feed on flying ants and insects, but flying ants are only produced by healthy (undamaged) ants nests. Ants nests harmed by vehicles and other damage cannot provide the flying ant food that bats rely on.

Park Lands Yellow-tailed Black Cockatoos need weeds

Yellow-tailed Black Cockatoos (*Calyptorhynchus funereus*) have been in rapid decline because of native habitat clearance and loss of their food supply and nest sites.

Yellow-tailed Black Cockatoos enjoy feeding on Pine trees in the South Park Lands and have been sighted in the South Park Lands this season. They are roosting at dusk in sugar gums near Beaumont Road and feeding in Park 24, north of Sir Donald Bradman Drive.

Yellow-tailed Black Cockatoos need the exotic introduced Pines (considered to be 'weed' species), because there are not enough native pines to satisfy their appetite. If the 'weed' pines are cut down they will lose this food source and go hungry, or go elsewhere. They also feed on native Sheoak (*Allocasuarina* sp.), but Adelaide City Council has also been removing these.

Michael Sando



Boiling frog syndrome

In April 2012, former Federal Minister Alexander Downer noted SA's state debt was already about \$9 billion and expected to climb back to a State-Bank-disaster debt level (\$11 billion) by 2015-16:¹

- SA's debt could reach \$27 billion by 2015-16 (taking into account unfunded superannuation and Workcover liabilities and future borrowings for the new RAH);
- we've 'too many public hospitals';
- the SA Government's 'policy settings are unsustainable', with insufficient revenue to fund them, requiring major increases in taxes, and
- boiling frog syndrome.

A quick look at the Budget² finds political luxuries figure largely, as government digs deeper and deeper into debt with doubly unsustainable Park Lands major projects:

- \$2.8 billion finance lease liability for the new Royal Adelaide Hospital (\$1.8

billion estimated non-government construction costs);

- an assets expense of \$30 million recognised in 2011-12 associated with the SA Health and Medical Research Institute for construction costs;
- \$435.1 million for a Stadium (p41), and
- \$85 million grant to SACA, and an extra \$2 million SACA/SANFL grant.

In a Media Release on 16/12/2012, Community Alliance SA President Tom Matthews said

*The community should not be paying for badly designed and planned developments ... nor for white elephants...South Australians can't afford to fund development money pits.*³

Kelly Henderson

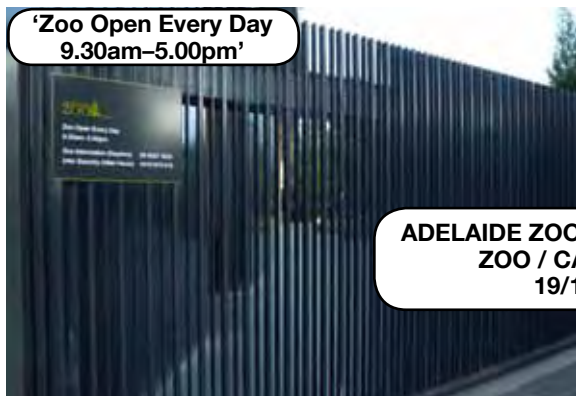
1. 'Downer: SA's perilous state debt', *The Advertiser*, 15 April 2012.
2. SA Government 2012-13 Budget Statement, p40.
3. <http://communityalliancesa.org.au/2012/12/20/what-would-colonel-light-do-what-will-john-rau-do/>



Plaque commemorating Australia's first Town-planning conference, Adelaide, SA, 1917, affixed to the northern face of Colonel William Light's Statue plinth, Light's Vision, Montefiore Hill, North Adelaide. Photo taken by K Henderson, 2011.

Signs of the times

'Zoo Open Every Day
9.30am-5.00pm'



ADELAIDE ZOO, FROME ROAD (right), and
ZOO / CAFE ENTRANCE (left)
19/12/2012 8:45 PM



**WRONG
WAY
GO BACK**



'Directional' sign, Park 20, Unley Rd (19/12/2012)—the sign clearly says "Adelaide City Council's 'management' of signage is going in the wrong direction!"

What's in a title?

At the time of his election to the Lord Mayoralty in 2010 at the age of 39, Stephen Yarwood pronounced himself the youngest ever Lord Mayor of Adelaide.

A lazy Adelaide media has reinforced that claim, with the Lord Mayor repeating his 'youngest ever Lord Mayor' at every available opportunity and, by inference, that this 'fact' confers some sort of meaningful distinction.

History records that in 1911, the then Mayor of Adelaide, Lewis Cohen, in London for the Coronation of King George V, took that opportunity to apply to the British Government's Secretary of State for the Colonies to plead Adelaide's case to become a Lord Mayoralty. It was reported that Cohen's application was not well received, as the British Government had previously decided not

to appoint any additional Lord Mayors to colonial cities. At that time only Sydney and Melbourne had Lord Mayors.

It was not until after World War I that the Agent General for SA in London made a successful application for Lord Mayoralty status for Adelaide. The decision was largely influenced by SA's war efforts, which saw great numbers of South Australians enlisting, and large sums of money raised for the war effort.

s of the time Charles Glover, already Mayor of Adelaide from 1917, became the first Lord Mayor of Adelaide in 1919. The only effect of the 1919 name change from Mayor to Lord Mayor was a change to the stationery. The duties attaching to the office remained the same. Arguably, the office of Mayor of Adelaide is not distinguishable from the office of Lord Mayor of Adelaide.

The distinction of being the youngest person elected to the office of Mayor/Lord Mayor ... clearly resides with John Lavington Bonython

The rightful 'youngest ever' Mayor/Lord Mayor of Adelaide

If an office bearer's age on entering office is of any interest or relevance, then other comparisons between office holders are equally relevant.

In 1901, John Lavington Bonython was elected to the Adelaide City Council as a councillor. In 1907 he became an alderman, and then Mayor of Adelaide between 1911 and 1913. Born on 10 September 1875, he was 36 years of

Victoria Park – don't miss this race

So says an advertisement appearing under the commercial properties section of *The Advertiser* in recent times.

We are told by the ACC's property agent four unique and very special offerings are now leasing on prime Park Lands positions with direct access from Fullarton Road and that these flexible offerings will be keenly sought after.

Uses and combinations of uses that may be considered, subject to various consents, include but are not limited to hospitality, licensed restaurant, cafe, retail, tourism, cultural, or other associated commercial uses.

The areas available for lease are:

- the enormous ground floor of the heritage grandstand;
- the former Bookmakers League building;
- the Grandstand Entrance façade, being the former racecourse ticketing and turnstile area, and
- the stand-alone timber kiosk, of some heritage value, unused for many years.

The agent states 'the Adelaide City Council is keen to have the buildings leased to viable and exciting businesses that encourage use of the Park Lands, with excellent access via bike, car or foot.'

Apparently, the ACC prefers to promote the site as some kind of commercial hub to be exploited because of its 'prime position' on the Park Lands. The ACC concedes significant funding is required to bring the buildings up to a tenable standard, a standard not enforced by the ACC during the travesty of the SAJC's previous occupation of Victoria Park.

Large hoardings advertising the proposed leases have been placed in the Park Lands on the Fullarton and Wakefield roads' frontages, contravening the ACC's own Park Lands advertising policy.

Philip Groves



Top: Victoria Park adjacent Britannia Roundabout, Wakefield Road. Inset, top right: Artsign Outdoors sticker, on rear of signage. Left: The Kiosk commercial advertising signage adjacent Britannia Roundabout and along Fullarton Road. Photos taken by K Henderson, 30 October 2012.

For the record

It is timely to revisit statements and promises made by Jay Weatherill when, as Minister for Environment and Conservation, he attended the February 2010 Adelaide Park Lands Authority (APLA) Board meeting.

Minister Weatherill was invited to present a summary of Labor Party policies for the Park Lands, as were other political parties.

In her *News from the Adelaide Park Lands Authority* of 19 February 2010, APLA Board Member Gunta Groves reported on Minister Weatherill's address:

Jay Weatherill reviewed Labor's contributions to the Park Lands, including introducing the Park Lands Act, money provided to the ACC, and returning alienated Park Lands to open space. He stated that the Park Lands were not just cheap land to be passed on to developers.

He justified building the new RAH on the Park Lands by saying that Light has always intended a hospital to be built in the Park Lands. A promise was made to return the old RAH site to Park Lands. He also commented on the ACC appointments to the APLA and intimated that non-Councillors should be included to create a greater perception of independence.

Jay Weatherill's comment to the meeting that non-Councillors should be appointed to the Board has fallen on deaf ears, witnessed by the re-appointment of four ACC councillors, and remembering that the legislation requires that the Lord Mayor is the Board's Presiding Member.

2006 - Structure Plan commissioned by LMC 50% (24.3ha) open space including a regional park of 21 ha



2012 - 35% (17.3ha) no regional park; minimal useable open space in NW corner; open space reconfigured eastwards, open space design for premium 'water-side' promotions

If Jay Weatherill wants to see a greater perception of independence on the APLA Board, why are the other five members Ministerial appointments?

The APLA Board remains as it has been since its formation: a heavily conflicted structure consisting of council and state government appointees, with some members demonstrating very little knowledge of, or affinity for, Park Land matters. In practice, the APLA Board remains a committee of the ACC, with ACC councillors, to all intents and purposes, providing advice to themselves.

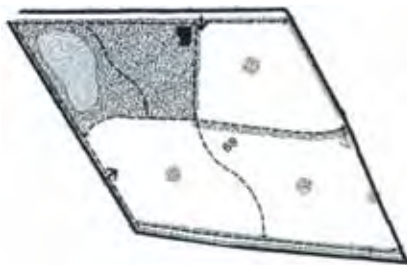
Weatherill's promise to return the old RAH site to Park Lands also needs to be considered in the context of other 'promises' made. As Member for Cheltenham, Weatherill made promises to his electors and the people of South Australia over two election campaigns that he would not support the re-zoning of Cheltenham Park Racecourse, which had been proclaimed as open space in perpetuity (prohibiting subdivision).

He subsequently and controversially reneged on those promises, supporting the state government's re-zoning of the Racecourse which allowed the SA Jockey Club to reap massive windfall profits subdividing the land for housing development. It also denied the residents the only significant open space remaining in the western suburbs.

What store can South Australians place on any 'promises' or commitments made by now Premier Jay Weatherill?

Philip Groves

2007 - draft Ministerial Development Plan Amendment (DPA) 35% (17.3 ha) open space still with a NW-corner regional park



2008 - Final DPA 35% (17.3ha) open space reconfigured eastwards



Park LANDS News December 2012—18

What's in a title?

continued from p 17

age when he was appointed Mayor of Adelaide. Later, he became Lord Mayor of Adelaide (1927–1930), received a knighthood in 1935, and died on 6 November 1960. The distinction of being the youngest person elected to the office of Mayor/Lord Mayor, therefore, clearly resides with John Lavington Bonython.

It is unlikely the current Lord Mayor Stephen Yarwood will threaten the contribution made by Lavington Bonython to the Adelaide City Council. Bonython's commitment to heritage conservation and protection in both the city and the state was renowned. The immense contribution he made to the civic and business life of Adelaide is a matter of public record.

A modest man, Sir John Lavington Bonython spent all of his lifetime doing, rather than talking about himself and his achievements.

This contrasts with the incumbent Lord Mayor, who appears to be using the office for the purpose of boosting his own profile, perhaps for a tilt at a higher office. Any guesses?

The 'youngest ever' mantle Lord Mayor Yarwood uses could more accurately be described as the youngest ever Mayor/Lord Mayor to roll-over to the state government on Park Lands issues.

During his leadership, the Park Lands have been under relentless pressure from government and business.

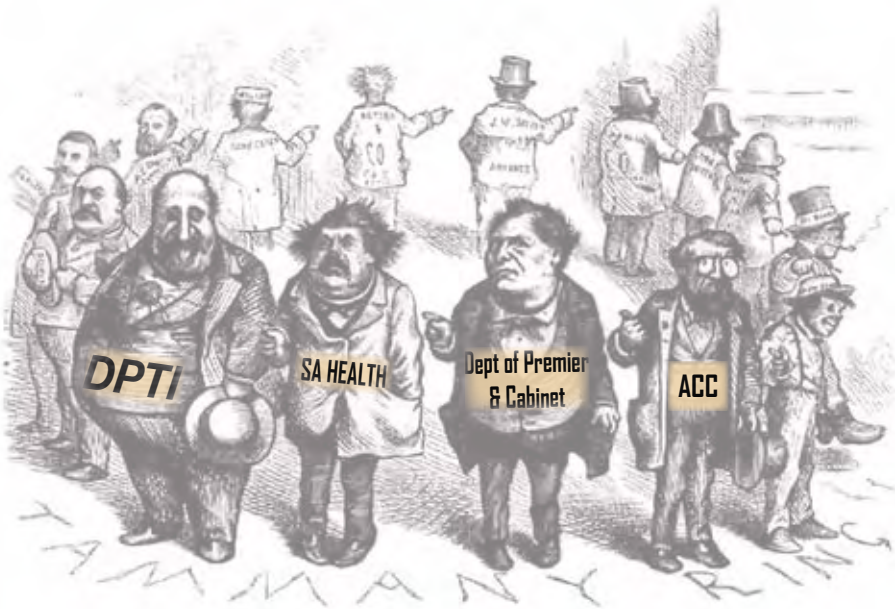
There have been more secret meetings and 'deals' concerning the Park Lands than at any other time, despite his claims to care about them.

Philip Groves



Above: Jay Weatherill ALP Candidate for Cheltenham opposes subdivision of Cheltenham Park Racecourse in pre-election material "Only Labor will fight to save the racecourse", c 2001.

Left: The erosion of Cheltenham Park Racecourse open space promises.



'WHO TOOK THE PEOPLE'S PARK LANDS?' ... 'T'WAS HIM

Above: Adapted by K Henderson from 'The Two Questions'/'Tammany Ring' by Thomas Nast (1840-1902), originally published in Harper's Weekly (A Journal of Civilization) New York, August 19, 1871, p 764.

Committee 2012-2013

President: Ian Gilfillan

Secretary: Brian Mitchell

Treasurer: Luciana Larkin

Committee members:

- Jonathan Harry
- Kelly Henderson
- Luciana Larkin
- Damian Mugavin
- Kyle Penick
- Hamish Ramsay
- Michael Sando
- Shane Sody

Auditor David Carver, BK Partners

Editor/Web administrator
Kelly Henderson

DISCLAIMER

The information in this publication is presented in good faith to members of APPA Inc. While the information is believed to be correct, APPA Inc takes no responsibility for its accuracy. No liability is accepted for any statements of opinion or any error or omission. Although advertising material is accepted for this newsletter, such acceptance does not imply endorsement by APPA Inc.

NEW MEMBERSHIP APPLICATION FORM

Adelaide Park Lands Preservation Assoc Inc PO Box 7334 Hutt Street SA 5000

Name

Address

Telephone E-mail Date

- \$25 single (full rate) Send *Park Lands News* via e-mail
- \$30 family (full rate) Donation \$.....
- \$35 corporate
- \$15 single (concession)
- \$25 family (concession)

Method of payment

- Cheque attached Money order attached Electronic Funds Transfer

OBJECTIVES OF THE ASSOCIATION ARE TO ENSURE THAT:

- the Park Lands are available for use by the general public
- the public, so far as practicable, has free and unrestricted access to the Park Lands
- the Park Lands are reserved as a place for public recreation, leisure and enjoyment
- alienated areas of the Park Lands are restored for recreational use, preferably as open space
- the open space character of the Park Lands as a place dividing the City of Adelaide from the suburbs is preserved
- the Park Lands are preserved and maintained in a manner that enhances their special place in the design of the City of Adelaide
- the amenity of the Park Lands is not impaired by inappropriate development of nearby lands
- the Park Lands are included on State, National and World Heritage lists.

I agree to be bound by the Constitution of the Association. Signature

Please make cheque/money order payable to: Adelaide Park Lands Preservation Association Inc (*not 'APPA'*)

Electronic Funds Transfer to ANZ: BSB: 015-310 Acc No: 4063-53172

Send to: Adelaide Park Lands Preservation Assoc Inc, PO Box 7334 Hutt Street SA 5000

08/12

Contact

Ian Gilfillan (President)

Telephone: (08) 8333 0534
Mobile: 0429 0429 50

Brian Mitchell (Secretary)

Telephone: (08) 8263 5168

News, comments, articles and Web site suggestions:

The Editor
c/- PO Box 7334
Hutt Street SA 5000
Mobile: 0432 989 676
E-mail: appa.editor@gmail.com

Next newsletter copy deadline:

25 January 2013

Membership:

Membership of the Association is open to all who support the objectives of the Association. Members receive the *Park Lands News* four times a year.



Detail: Colonel William Light, Australia, 1786–1839, *The commencement of colonization in South Australia, 1837*
c.1837, Adelaide, watercolour on paper, 34.2 x 58.9 cm
Gift of Sir Edwin Thomas Smith KCMG, 1890
Art Gallery of South Australia, Adelaide

LOCATION KEY
View depicted in
Colonel William Light's
*'The commencement of colonization
in South Australia, 1837'*

