

# ParkLANDS news

October 2013 Number 52



## Contents

Vale Hon Frank Trevor Blevins ... 2	6 ... Vale Professor John Brine
Park Lands Alert: Urban Development ... 2	7 ... Vale Margaret Helen Stobie née Green
Editorial ... 2	8 ... Lest we forget: Park Lands service memorials
Australian honours ... 3	9 ... Dardanelles bouquet
Shameful Act threatens Park Lands ... 3	10 ... <i>Plan of the District of Adelaide:</i> Light, Finniss & Co, October 1838
Letter to the Editor ... 4	11 ... Review: <i>Anticipating Municipal Parks</i>
2013 State of Environment brickbat ... 4	14 ... Signs of the Times
Don't Forget—Closes 28 November: The Adelaide Park Lands Art Prize ... 5	16 ... <i>Trick or treat?</i>
Gautier applauds bio-medical precinct ... 5	

# Vale Hon Frank Trevor Blevins

3 June 1939–7 September 2013

Frank Blevins was a great advocate for the Adelaide Park Lands and their importance as public open space and recreation areas for the citizens of greater Adelaide.

He had come from a different environment in the industrial inner suburbs of Manchester and lived in a two-up, two-down row cottage with no electricity and no bathroom. He was widely read and had a great sense of history. He understood the importance of the Adelaide Park Lands to one of the world's first planned cities.

The incorporation of the Park Lands in the Adelaide City Plan was part of the enlightenment reaction to the shocking living conditions in the slums of British cities.

Open space and garden areas is now the norm for city planning and is acknowledged as important for quality of life for urban living.

Consistent with his Labor values, Frank regarded the Park Lands as owned by the community and as a free public asset they should not be alienated to private interests or for massive public works.

As a member of the Bannon Cabinet in the 1980's he supported the proposals to return as much as possible of alienated Park Lands to open space. He was firmly opposed to the proposal by Deputy

Premier Foley for a large permanent corporate grandstand for horse and motor racing in the centre of open space parklands in Victoria Park. He worked actively behind the scenes, with local

Member Jane Lomax-Smith, and supported legal action to block the proposal. He regarded it as unprincipled.

First, it was in direct conflict with the election commitments given by Labor in the 2002 and 2006 elections. It was these commitments that helped secure the seat of Adelaide for Labor and delivered it government by one seat in 2002.

Jane Lomax-Smith was the successful Labor candidate and Frank was her campaign director.

Second, he regarded the proposal as an affront to long standing Labor values and Labor Party policy against the alienation of the Park Lands to private interests and the destruction of public, open and free, recreational space. These policies had been affirmed over many decades going back to Don Dunstan's espousal of proper city planning including preservation of the Park Lands.

Frank did not support the substantial encroachment on the Park Lands involved in the relocation of the RAH or the current Riverbank proposals. Until illness incapacitated him, Frank used his considerable skills in support of the Park Lands as a member of the Adelaide Park Lands Authority.

Chris Sumner  
28 October 2013



Above: Hon Frank Blevins, at the Wellington Hotel, North Adelaide. Photo taken by Julia Sumner, Christmas Day, 2011.



## Editorial

This Remembrance edition extends condolences to the families of friends of the Adelaide Park Lands who have passed on. Thanks to those who have provided us with an insight into their life, and love of the Adelaide Park Lands, their story is now part of our history of this remarkable open space and of our Association.

At 11am on the 11th November 1918 the guns of the Western Front fell silent, and from the first anniversary of armistice in 1919 two minutes' silence became a feature of annual commemorations. In Australia the significance of Remembrance Day was re-established on the 75th anniversary, with ceremonial entombment in the National War Memorial's Hall of Memory of an unknown Australian soldier exhumed from a WWI military cemetery in France. In 1997, by proclamation, Governor-General Sir William Deane declared 11 November to be Remembrance Day, and urged all Australians to observe one minute's silence at 11am on 11 November each year to remember those who died or suffered for Australia's cause in all wars and armed conflicts. Lest we forget. —Ed.

[www.awm.gov.au/commemoration/remembrance/tradition/](http://www.awm.gov.au/commemoration/remembrance/tradition/)

## PARK LANDS ALERT

**Housing and Urban Development (Administrative Arrangements) (Urban Renewal) Act 2013**

On 15 October 2013 a new Act was passed with powers to set aside Development Plan controls, including in the Adelaide Park Lands, by Ministerial issuance of a notice declaring a 'precinct'. In the case of the Park Lands the Act would require 'consent' from the Adelaide Park Lands Authority, formerly an 'advisory' body.

Cover: *Eternal flame, Cross of Sacrifice Gardens, Pennington Garden East, Adelaide Park Lands.* Photo taken by K Henderson, October 2013.

Back cover: *'Trick or Treat?', Deborah Baldassi, ©2012.* Photos taken by K Henderson, October 2013.



Detail: The former Adelaide Park Lands Authority, as at 21 May 2010. Left to right: Cr Dr Michael Henningsen, Lord Mayor Michael Harbison, Ms Jane Chapman, Cr Ralph Clarke, Hon Frank Blevins, Professor Jane James, Hon Ian Gilfillan, Cr David Plumridge AM, Cr Anne Moran, Ms Mary Marsland. Courtesy of the Adelaide Park Lands Authority.

Editor's Note: See Hon Frank Blevins' parliamentary career (Deputy Premier, Treasurer, etc) at [www2.parliament.sa.gov.au/FormerMembers/Print/DetailPrint.aspx?pid=2498](http://www2.parliament.sa.gov.au/FormerMembers/Print/DetailPrint.aspx?pid=2498).

## THANK YOU BRIAN

In October the committee accepted Brian Mitchell's retirement as Secretary and Public Officer with regret, and wished Brian a rapid recovery from ill-health. Brian's service to the Association was recognised with an Honorary Life Membership awarded at the 2010 AGM, and he returned to serve as Secretary from 2011.

Wishing you a swift recovery and enjoyment of a well-earned retirement, thank you Brian.

## Public Officer and Secretary

President Hon Ian Gilfillan has been appointed as the Association's Public Officer, with committee member Shane Sody acting as Secretary *pro tem*.

### Ian Gilfillan (President)

Telephone: (08) 8333 0534

Mobile: 0429 0429 50

### Shane Sody (Secretary pro tem)

Telephone: 0414 959 125

## Australian honours

In congratulating all recipients of 2013 Australian Honours we note several relate to planning, heritage conservation, World Heritage or Park Lands custodians:

Australia Day Honours 2013 Member (AM), General Division:

- Dr Michael John LLEWELLYN-SMITH, Adelaide, SA. *For significant service to local government through the promotion of city and state relations and planning.*
- The Honourable Dr Jane Diane LOMAX-SMITH, Adelaide, SA. *For significant service to the Parliament and the community of South Australia.*
- Leigh Robert WHICKER, Stirling, SA. *For significant service to the sport of Australian rules football in South Australia.*

<http://www.gg.gov.au/australia-day-2013-honours-lists>

The Queen's Birthday Honours 2013, Member of the Order of Australia (AM):

- Ms Kristal Irene BUCKLEY, Vice-President, International Council on Monuments and Sites (ICOMOS) since 2005, Member ICOMOS delegation to the World Heritage Committee, since 2007; President Australia ICOMOS 2002-05. *For significant service to conservation and the environment, particularly in the area of cultural heritage, and to education.*
- Emeritus Professor Norman Alan ETHERINGTON. President of the National Trust of South Australia since 2012; Member of the Mayor's Committee, City of Fremantle World Heritage Nomination 1990-92. *For significant service to education, particularly in the discipline of history, through contributions to heritage preservation, and to the community.*

Medal (OAM) in the General Division:

- Mr David Alfred BEAUMONT OAM (B Arch St 1996, B A 1997, B Arch St (Hons) 1998, B Arch 2000) *For service to the community, particularly through heritage organisations.*

<http://www.gg.gov.au/queens-birthday-2013-honours-list>

Kelly Henderson

**NEXT NEWSLETTER  
COPY DEADLINE:  
15 November 2013**

Always in search of pithy articles, educational information and comment on current issues

## SA Heritage Council Public Consultation

### Shelter Shed, Princess Elizabeth Children's Playground

On 25 September 2013 the Shelter Shed (IPrincess Elizabeth Children's Playground Shelter Shed, east of Goodwood Road, Adelaide Park Lands, South Terrace, Adelaide) was provisionally entered in the Heritage Register.

[http://apps.planning.sa.gov.au/HeritageSearch/HeritageItem.aspx?p\\_heritageno=26986](http://apps.planning.sa.gov.au/HeritageSearch/HeritageItem.aspx?p_heritageno=26986)

Under the *Heritage Places Act 1993* ss 17 (4) (b)(iii) '... **any person has a right to make written submissions, within three months, on whether the entry should be confirmed.**'

Contact: State Heritage, (08) 8124 4960  
[DEWNRHeritage@sa.gov.au](mailto:DEWNRHeritage@sa.gov.au)



Shelter shed, Princess Elizabeth Children's Playground. Photo taken by K Henderson, May 2013.

## Shameful act threatens Park Lands

The *Housing and Urban Development (Administrative Arrangements) (Urban Renewal) Act 2013* blatantly intends to be applicable to the Adelaide Park Lands.

In essence it is a *carte blanche* for development by Ministerial fiat. It presumes to employ 'consent' of the Adelaide Park Lands Authority (a government-appointed quango) to 'authorise' the Minister's issuance of notices (edicts) declaring urban development 'precincts' in the Adelaide Park Lands.

Passed by Labor, Liberal and Family First in the Legislative Council on 15 October 2013, it was only voted against by Greens Party MLCs.

Kelly Henderson

### AYES (17)

Brokenshire, R.L.	Lensink, J.M.A.
Darley, J.A.	Lucas, R.I.
Dawkins, J.S.L.	Maher, K.J.
Finnigan, B.V.	Ridgway, D.W.
Gago, G.E.	Stephens, T.J.
Hood, D.G.E.	Wade, S.G.
Hunter, I.K. (teller)	Wortley, R.P.
Kandelaars, G.A.	Zollo, C.
Lee, J.S.	

### NOES (3)

Bressington, A.  
Franks, T.A.  
Parnell, M. (teller)

See [http://hansard.parliament.sa.gov.au/pages/loaddoc.aspx?e=2&eD=2013\\_10\\_15&c=31](http://hansard.parliament.sa.gov.au/pages/loaddoc.aspx?e=2&eD=2013_10_15&c=31)

# Letter to the Editor

View from Light's Vision Montefiore Hill  
22 June 2013

## Blocked views ring warning bells

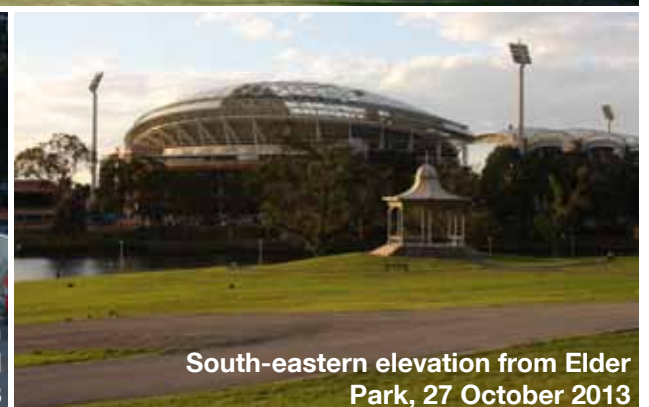
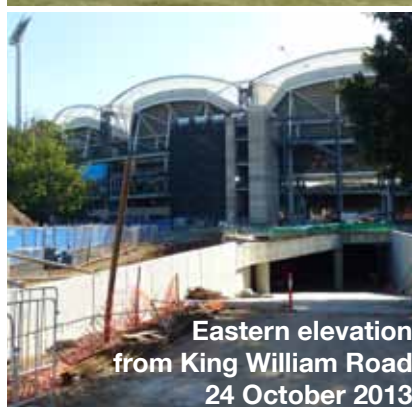
Kevin O'Leary's article about poor planning decisions in Adelaide (*The Advertiser*, September 17) is yet another timely warning bell about the shortcomings of our Development Plan Amendment processes. Just think Buckland Park, Mt Barker and St Clair and you'll understand his main thesis.

O'Leary's listing of "serious weaknesses" in our DPA processes include loss of skylines and views. A perfect example is Light's Vision on Montefiore Hill where you can no longer see the city and the hills because all is blocked out by the new stands at Adelaide Oval.

This loss was never shown in all the grand plans and wizzbang flyovers produced to persuade us all that close to \$650m was a worthwhile investment by the taxpayers.

Nothing, now, will retrieve this loss but it's truly time that the public's input and proper planning controls are put ahead of "back-room deals undertaken with acquiescing governments".

G. Groves  
Glynde



## 2013 State of Environment brickbat

### People and places:

'Poor' ratings: Population, Economy, Transport and Waste. 'Good' rating: Pollution, but with 'limited evidence or limited consensus' and 20% increase in noise complaints from 2006 to 2011.

### Biodiversity

'Very poor': threatened species and ecological communities (deteriorating), and introduced species (new pests and diseases, and increased number, distribution and abundance of most pest plants, animals and diseases).

'Poor': native vegetation (deteriorating; declining extent and condition, increase in illegal clearing, and decrease in the area of revegetation since 2008), soil and land management.

### Climate change

'Poor' and 'Very poor': deteriorating rainfall, temperature, sea-level, oceans, marine and terrestrial biodiversity, and human health, infrastructure, agriculture and forestry.

### Water

'Poor' and 'Very poor': water use, water quality, groundwater quantity and quality, water for consumption;

'Good': water supply, and surface water quantity and quality (above-average rainfall 2010-11).

The summary claims climate change, strain on freshwater supplies and likelihood of further irreversible loss of biodiversity are 'essentially unavoidable'

and highlight the 'need' to 'decouple economic activity from environmental impacts' (does this mean stopping deliberate or profit-driven environmental damage?), and identifies:

- 'the natural resources of the state are declining';
- 'the most significant challenge for reporting on the state of the environment remains inadequate access to relevant, up-to-date information';
- need for good quality, relevant, up-to-date and accessible information.

Kelly Henderson

### State of the Environment, South Australia (Environment Protection Authority, 2013):

Summary (1.9MB):

[www.epa.sa.gov.au/soe\\_2013/downloads/SOESA-WEB-SUMMARY-02\(27Aug13\).pdf](http://www.epa.sa.gov.au/soe_2013/downloads/SOESA-WEB-SUMMARY-02(27Aug13).pdf)

Full (10.4MB):

[www.epa.sa.gov.au/soe\\_2013/downloads/SOESA-WEB-MAIN-02\(27Aug13\).pdf](http://www.epa.sa.gov.au/soe_2013/downloads/SOESA-WEB-MAIN-02(27Aug13).pdf)



**DON'T FORGET - CLOSES 28 NOVEMBER**

## The Adelaide Park Lands Art Prize

capturing the essence of the Adelaide Park Lands

OVERALL WINNER \$20,000  
COMMENDED 5 PRIZES OF \$2,000 EACH

NON-ACQUISITIVE

Competition opens early June this year.

All details are available at [www.parklandsart.com](http://www.parklandsart.com)  
Paintings, drawings, sculpture and photography are eligible.

The exhibition of winners and finalists will be shown at the Festival Centre Gallery, Adelaide from late February to April 2014.

An initiative of APPA - the Adelaide Park Lands Preservation Association Inc.

The first ever Adelaide Park Lands Art Prize.



Image credits: Park Lands - Henry Hill Photo, Creative Light - 1/10/14

# Key Dates

- Entries Open** Saturday 1 June 2013
- Entries Close** Thursday 28 November 2013  
not later than 5:00 pm,  
local Adelaide time  
(see Entry Form for addresses)
- Finalists Notified** Thursday 9 January 2014
- Finalist Artworks Delivered**  
Wednesday 5 February to Friday 7 February 2014  
(delivery details will be sent with notice to finalists)
- Installation Dates**  
Wednesday 12 February to Friday 14 February 2014
- Judging Finalists** Friday 14 February 2014
- Exhibition Opening – Winners Announced**  
Friday 14 February 2014  
Festival Centre Artspace Gallery, 5:30–7:30 pm
- Exhibition will be Open**  
Saturday 15 February to Sunday 6 April 2014
- Exhibition Hours**  
Wednesday to Sunday, 12 pm to 4 pm  
Thursday 12 pm to 8 pm
- Exhibition Close – Peoples prize announced**  
2:30 pm Sunday 6 April 2014 at Festival  
Centre Artspace Gallery
- Dismantle Exhibition** Monday 7 April 2014
- Collect Artworks**  
Tuesday 8 April to Friday 11 April 2014  
(collection details will be sent  
with “notice to finalists”)

[www.parklandsart.com/dates/](http://www.parklandsart.com/dates/)

## Gautier applauds bio-medical precinct

In a response to government’s Riverbank Health and Entertainment Areas DPA consultation, on behalf of the Adelaide Festival Centre (AFC) CEO and Artistic Director, Douglas Gautier stated the AFC:

*... applauds the introduction of a Biomedical Precinct and congratulates the State and Federal Government on what has already been achieved and is looking forward to what is to come.<sup>1</sup>*

The AFC seems to believe enormous influx of hospital staff, students, patients’ visitors and out-patients will ‘bring a “critical mass” of people to the area that will be of enormous benefit to the Entertainment Precinct’. Gautier notes a gallery and an exhibition space, as per the 2011 Master Plan’, are no longer able to be ‘placed under the bridge landing’ because of new office administration space and a new bistro in the Footbridge project. The gallery and exhibition space, as well as a BASS outlet, ‘would now be placed as part of the commercial and retail buildings envisaged for the north and east sides of the new Plaza.’

*On our understanding, this DPA ... is a necessary precondition for the AFC Redevelopment and is supported by the AFC’ [which] ‘considers itself the only logical and viable curator and manager of the plaza space’.*

The AFC submission reports ‘more recent AFC policies and documentation’ have ‘superseded’ ‘some elements’ of the 1999 Adelaide Festival Centre Conservation Management Plan:

*... current AFC Board and Management do not advocate for the retention of the Hayek Plaza and all of its sculptures because its structural and functional deficiencies are an impediment to the desires of the AFC and the requirements of an Entertainment Precinct.*

*Kelly Henderson*

1. AFC, 10 September 2013, see [http://sa.gov.au/upload/franchise/Housing,%20property%20and%20land/PLG/2013/RiverbankHealthEntertainment/Submissions/P009\\_Adelaide\\_Festival\\_Centre.pdf](http://sa.gov.au/upload/franchise/Housing,%20property%20and%20land/PLG/2013/RiverbankHealthEntertainment/Submissions/P009_Adelaide_Festival_Centre.pdf).

## Judges

**Robert Hannaford**  
Painter and Sculptor  
Riverton, South Australia

**Douglas Gautier**  
Director  
Adelaide Festival Centre

**Rex Jory**  
Journalist, Adelaide

**Milton Wordley**  
Photographer, Adelaide

**Kirsty Darlston**  
Weaver, Educator, Canberra

[www.parklandsart.com/judges/](http://www.parklandsart.com/judges/)  
**NOTE: This information is to be updated.**

# Vale Professor John Brine

23 September 1935 - 14 December 2012

Professor John Brine was a very strong supporter of putting the Adelaide Park Lands on the World Heritage List. In May 2010, when international surveying history expert Professor Jan De Graeve, of the International Federation of Surveyors, visited Adelaide to investigate Light's Plan and his survey, John and his partner Norma welcomed Jan to their home, and to Adelaide. Thanks to information provided by John's family it is possible for us to gain an insight into how John became a friend of the Park Lands.

Born in Melbourne, John qualified in Architecture at the University of Melbourne in 1955. After practicing in Melbourne, in 1967 he went to the University of Edinburgh where he completed a PhD in urban planning. In 1972, he took up a Readership at the University of Adelaide under Rolf Jensen, establishing a Masters in Planning which could be done by either coursework or thesis. This attracted many students from interstate and overseas who went on to take up senior positions in government and industry.

Under the chairmanship of Hugh Stretton, John was appointed to the City of Adelaide Development Committee which played an important role leading up to the introduction of the first City of Adelaide Plan. He also convened the 1976 National Royal Australian Planning Institute Conference in Adelaide. The following year John visited Mornington Island, devastated by a cyclone in December 1976, and commented on poor planning. He was clearly an advocate for environmentally sensitive design:

*More disturbing was the impression I received that the new insensitive grid-iron 'town-planning' had perhaps been done by some junior in a remote Brisbane surveyors' office, working from aerial photographs ... I was shown the natural phenomena of ant hills on the proposed building sites, which indicated that, in the 'wet' season, these sites were subject to knee-high flooding ... This was a situation which would possibly be alleviated by costly earthworks and drains, but a more environmentally sensitive solution might surely have been proposed. (J Brine, 1980)*

David McKnight notes John's fears were 'well-founded because eventually very expensive drainage had to be constructed,' and Tim Simpson, a former student of John's, valued his holistic approach:

*I had the privilege and pleasure of being taught by Dr John Brine at the architecture school of the University of Adelaide. He was a quiet man whose even temper and natural good humour must have been tested by the frustrations of dealing with a roomful of wilful, young, creative minds. If his equanimity was tested, he never showed it. He brought to his teaching a depth of experience earned in a lifetime of architectural practice. With his background in urban planning, he helped architecture students to appreciate the context of even the most humble design; that architecture has effects beyond the boundaries of the client's land on which it stands.*

*It is perhaps the appreciation of the holistic nature of architectural practice for which students should be most thankful to him, and for which I am grateful.*

Tim Simpson BArch BArchSt

Although a modernist at heart, in the 1980's John became interested in heritage and conservation, which led to involvement in the work of ICOMOS, the Garden History Society, National Trust and more recently the Adelaide Park Lands Preservation Association. Partner Norma's eulogy provides other details, and our Vale:

*John liked a good discussion of ideas and current issues but also liked to do things. He didn't mind getting his hands dirty, and all his clothes! His interest in the conservation of buildings and the built environment was carried through into his daily life. The rather old fashioned approach of waste not want not!*

*... After retiring from full time work at the University of Adelaide, John returned to his earlier love of design and building. He liked a challenge and took on projects which enabled him to combine the many things in which he was interested and to use his own strengths, intellectual and practical ... The most daunting was in a small medieval town in rural France where he took on the task of restoring our old townhouse. This was in Castelnau-Montratier, from 1989 [and] took over a decade but during that time he also took on other projects ... [and over] the last 20 years we enjoyed many opportunities to travel together ...*

*... Friends have spoken of his generosity; described him as a gentle and interesting man, a very faithful friend; supportive, considerate, gracious, intelligent, kind and excellent company. A lovely, gentle man whose company they valued. Many have remarked on his lovely smile ... A school friend of mine said these words:*

*... he was such a treasure and it has been a privilege for me to be able to call him a friend. Thank you for giving me the chance to get to know John so well and to share his profound wisdom, knowledge and sense of humour—these qualities will all live on in our hearts ...*

As Norma rightly said, John was all of these things, and many more.

—Ed.



Above: John Brine in Jaca, Spain. Photo taken by Norma Carter, June 2011.



Above: Detail of Photo K20-27 © Rod Eime 1993.  
Below: Detail of Photo K33-3 © Rod Eime 1993.



Above: John Brine at Torrens Parade Ground, Adelaide Park Lands with his 1960 Finback Mercedes, 1993 Dutton Grand Prix Rally: John Brine (Driver), Jon Chittleborough (Navigator), stages in the 1993 Dutton GP Rally, from Melbourne to Adelaide.

# Vale Margaret Helen Stobie née Green

28 August 1933 – 8 September 2013

Without Margaret Stobie's quiet resolve and advocacy the National Heritage listing of Adelaide's Park Lands may never have happened.

This step towards World Heritage nomination had been held up by years of political delay, until Margaret decided it needed to be moved along. By early November (2008) Minister Garrett was at Light's Vision confirming the Park Lands 'are an enduring treasure for the people of South Australia and the nation as a whole, and their inclusion on the National Heritage List is a fitting recognition of their value.'

The Adelaide Park Lands were a great passion of Margaret's, and she often expressed regret at not being well enough to do more. A hip operation nearly a decade ago left her suffering debilitating pain, unable to sit or stand in comfort for any length of time. With great fortitude she was as active as possible, interested in APPA, the North Adelaide and Mediterranean Garden Societies, and confident that there really was something in this World Heritage idea.

Words cannot express how much I valued Margaret's friendship and support. In 2010, during my term as APPA President, the Association collaborated with the Surveying and Spatial Sciences Institute and SA Surveyor's Board to bring Professor Jan De Graeve—an expert on the history of surveying and measurement—to Adelaide to examine Light's Plan, papers, and surveying equipment. Margaret helped with planning the visit itinerary, and negotiated accommodation. Our international guest was welcomed to Adelaide, and to Margaret and her husband Peter's home, with a nourishing meal and convivial conversation. On hearing of Margaret's passing Jan particularly asked that his condolences be passed on to her family, having fond memories of Margaret and Peter, their lovely home, and their warm welcome.

Those not fortunate enough to meet Margaret may know a little of her from the following which borrows, with grateful thanks, from Peter's moving eulogy to his beloved wife, proud mother of four sons and loving and much loved grandmother of ten exceptional grandchildren.

Margaret was born in Adelaide, the eldest daughter of William Allan McInnes Green and Edyth Irene Thomas, and grew up in Perth where her father became the Perth City Council's Town Clerk and CEO. In the 1950's her father, Allan Green, convinced British-born town planner and architect Gordon Stephenson—who'd worked with Patrick Abercrombie on the Greater London Plan—to come to Perth. He was commissioned by government to produce a plan for metropolitan Perth and Fremantle. Afterwards Stephenson designed South Australia's Flinders University. Allan Green's friendship with the Stobie family dated back to his student years at South Australia's Institute of Technology, with Peter's father. At the age of 18 Peter volunteered with other medical students, driving buses across the Nullarbor to Perth. He visited the Green family, 'duly noted' 15-year old Margaret, and after a long-range courtship Peter proposed at Windy Point, overlooking the City of Adelaide.

*Margaret was a very special person, a member of a group of very special and accomplished women, who I met at the impressionable age of 18 and duly noted ... Margaret was her father's daughter. He was an able highly respected administrator of post war Perth, his ability as Architect, Town Planner and Town Clerk were unequalled in this country and she inherited a truly remarkable share of his ability to concentrate on details, to transmit her point of view to those in need of it, and a determination to complete a job once undertaken to the very best of her ability, and she maintained an interest in architecture and its wider manifestations to the end.*

*... [in her physiotherapy class] she topped every year, and was always class representative ... played hockey ... and was Ladies Champion of Dalkeith Tennis Club for 3 successive years from age 16 to 18, after which she declined very quietly an offer to train with the Linton Cup team for WA, having a future in physiotherapy more in mind ... [working] in the polio epidemic of the 50's she gained a lot of experience and demonstrated extraordinary compassion for the disabled.*

*We were on a long range courtship between Adelaide and Perth ... married in Perth in 1955 and lived in Bunbury ... left for Melbourne on my way to ophthalmology ... [and] to Adelaide 3 years later ... she could do anything she set her mind to ... took up bridge ... played golf and tennis ... served on school committees ... remained a keen concert goer ... [and was] interested in politics ...*

*[Margaret] was blessed in the knowledge that she would live forever in her beautiful talented grandchildren.*

Peter Stobie, Centennial Park memorial service, 14 September 2013

In Light Square, south of Surveyor-General William Light's memorial, stands a little 'Adelaide Park Lands and City Layout' National Heritage List plaque, which bears witness to the efforts of those who did what they could.

Vale Margaret, true friend of Adelaide's Park Lands.

—Ed.



## Do not stand at my grave and weep

*Do not stand at my grave and weep,  
I am not there; I do not sleep.  
I am a thousand winds that blow,  
I am the diamond glints on snow,  
I am the sunlight on ripened grain,  
I am the gentle autumn rain.  
When you awaken*

*in the morning's hush  
I am the swift uplifting rush  
Of quiet birds in circled flight.  
I am the soft stars that shine at night.  
Do not stand at my grave and cry,  
I am not there; I did not die.*

**Mary Elizabeth Frye's first poem,  
Baltimore  
1932**



Above: President's Cup won by Miss M Green, Dalkeith Tennis Club Ladies Singles Champion 1949, 1950, 1951.

Right: Dr Peter and Mrs Margaret Stobie, with dinner guest Professor Jan De Graeve (seated), Honorary Director of the International Institution for the History of Surveying and Measurement (IIHSM), Federation Internationale des Géometres, May 2010.



# Lest we forget: Park Lands service memorials

As a ceremonial space the Adelaide Park Lands contain many remembrances of service to our community and our nation. The Cross of Sacrifice and North Terrace National War Memorial are known to many from Anzac Day and Remembrance Day ceremonies, but other memorials are expected to be the first of their type in the British Commonwealth:

- 1914 Wattle Day War Memorial Oak, earliest identified WWI memorial, and
- 1915 Wattle Day Dardanelles / ANZAC Monument and Gallipoli Memorial Wattle Grove, earliest identified Australasian national war memorial.



NATIONAL WAR MEMORIAL  
NORTH TERRACE

## 1914 Wattle Day WWI Memorial Oak

The Adelaide Park Lands War Memorial Oak was planted as 'a chronological landmark of the Great War Year', in Creswell Garden by Governor Sir Henry Galway on 29 August 1914, on behalf of Federal Wattle Day League, in the presence of its Federal President (WJ Sowden) and Australia's Minister for External Affairs (Mr Glynn).

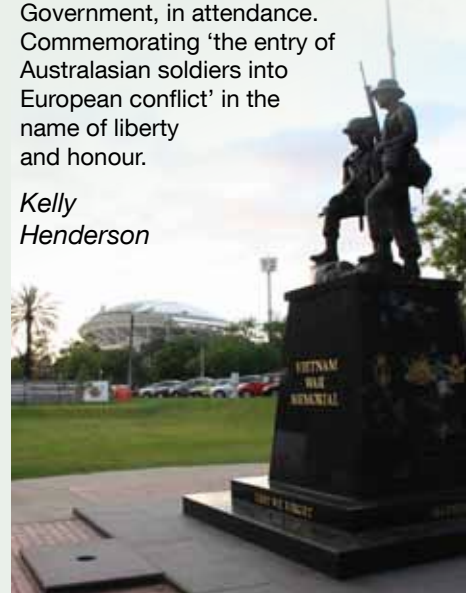
At the time of its planting, the War Memorial Oak was understood to be unique in the Southern Hemisphere and Australasia's first WWI memorial. In addition to being a living monument to the Great War Year, the Memorial Oak is associated with wattle seeds being planted on Gallipoli graves of Australian soldiers in 1915, and burials in France.

## 1915 Wattle Day Dardanelles / ANZAC Monument and Gallipoli Memorial Wattle Grove

Australasia's earliest national ANZAC

memorial, in the South Park Lands, was unveiled and dedicated by the Governor-General of Australia, Sir Ronald Munro-Ferguson, on 7 September 1915, with the Minister for Home Affairs, Hon WO Archibald, representing the Federal Government, in attendance. Commemorating 'the entry of Australasian soldiers into European conflict' in the name of liberty and honour.

Kelly  
Henderson



Top: 1914 War Memorial Oak (*Quercus robur*). Photo by K Henderson, 10 February 2010. Above: Vietnam War Memorial, Victoria Drive, 27 October 2013.



CROSS OF SACRIFICE GARDEN, PENNINGTON TERRACE EAST, NORTH ADELAIDE



SONS OF THIS PLACE, LET THIS OF YOU BE SAID,  
THAT YOU WHO LIVE ARE WORTHY OF YOUR DEAD;  
THESE GAVE THEIR LIVES THAT YOU WHO LIVE MAY REAP  
A RICHER HARVEST ERE YOU FALL ASLEEP.

THIS TABLET WAS PRESENTED TO THE DISTRICT  
BY COUNCILLOR WALLACE BRUCE.

LOWER NORTH ADELAIDE SOLDIERS MEMORIAL GARDEN



Above: Small White Butterfly / Small Cabbage White, female (*Pieris rapae*) on Rosemary in the Cross of Sacrifice Garden. Photo by K Henderson, 27 October 2013.



## WAR MEMORIAL DRIVE



Left and below: War Horse Memorial Trough, corner of East Terrace and Botanic Road (originally in Victoria Square) 'to commemorate the noble services of Australian horses toward the Empire's victories in the Great War 1914-1918'. Photo by K Henderson, 2013.



# Dardanelles bouquet

On 23 August 2013, the Heritage Council confirmed State Heritage listing of the '1915 Wattle Grove WWI War Memorial (Dardanelles Campaign, also called Gallipoli Campaign)' (Place No. 26394).

This State Heritage listing is welcome, although it would have been best to include the rest of the memorial. Like the provisional listing of the nearby Princess Elizabeth Children's Playground Shelter Shed, the listed Place is incomplete as it doesn't include landscape elements of the design, only its granite centrepiece:

- granite cross;
- polished granite capital with inscription
- rough-hewn granite pedestal, and
- granite base and brass plaque.

[http://apps.planning.sa.gov.au/HeritageSearch/Heritageltem.aspx?p\\_heritageno=26336](http://apps.planning.sa.gov.au/HeritageSearch/Heritageltem.aspx?p_heritageno=26336)

The 'Gallipoli Memorial Wattle Grove', with its four quadrants of 25 wattles representing the 25th day of the 4th month. This monument was dedicated by Australia's Governor-General on Wattle Day, 7 September 1915, and originally sited adjacent Sir Lewis Cohen Avenue, in an area of Park Lands recognised in recent decades as of great environmental significance for its remnant native vegetation.

Intrinsic design elements were left behind on Adelaide City Council's relocation of the monument's granite pieces to Lundie Garden, South Terrace. However, the move had environmental benefits in addition to giving the monument a prime site in a north-facing formal landscaped turf setting; near a pedestrian crossing and on-street parking, at a highly visible, accessible location.

Kelly Henderson



SRG 168/1/58/46



Walter C Torode, designer, 7 September 1915:

*The uncut blocks of granite represented the rugged hills up which the Australian soldiers had to climb in making their landing at Gallipoli. The stone at the apex was meant to represent an achievement, a victory, and on it were cut the words,*

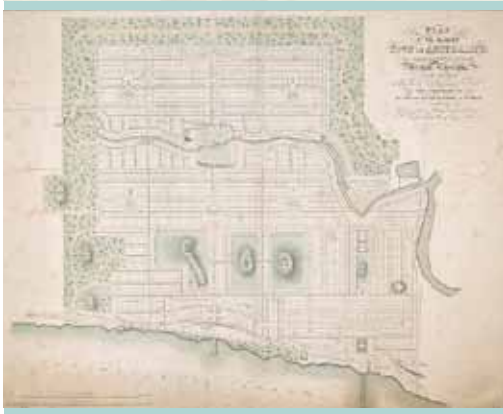
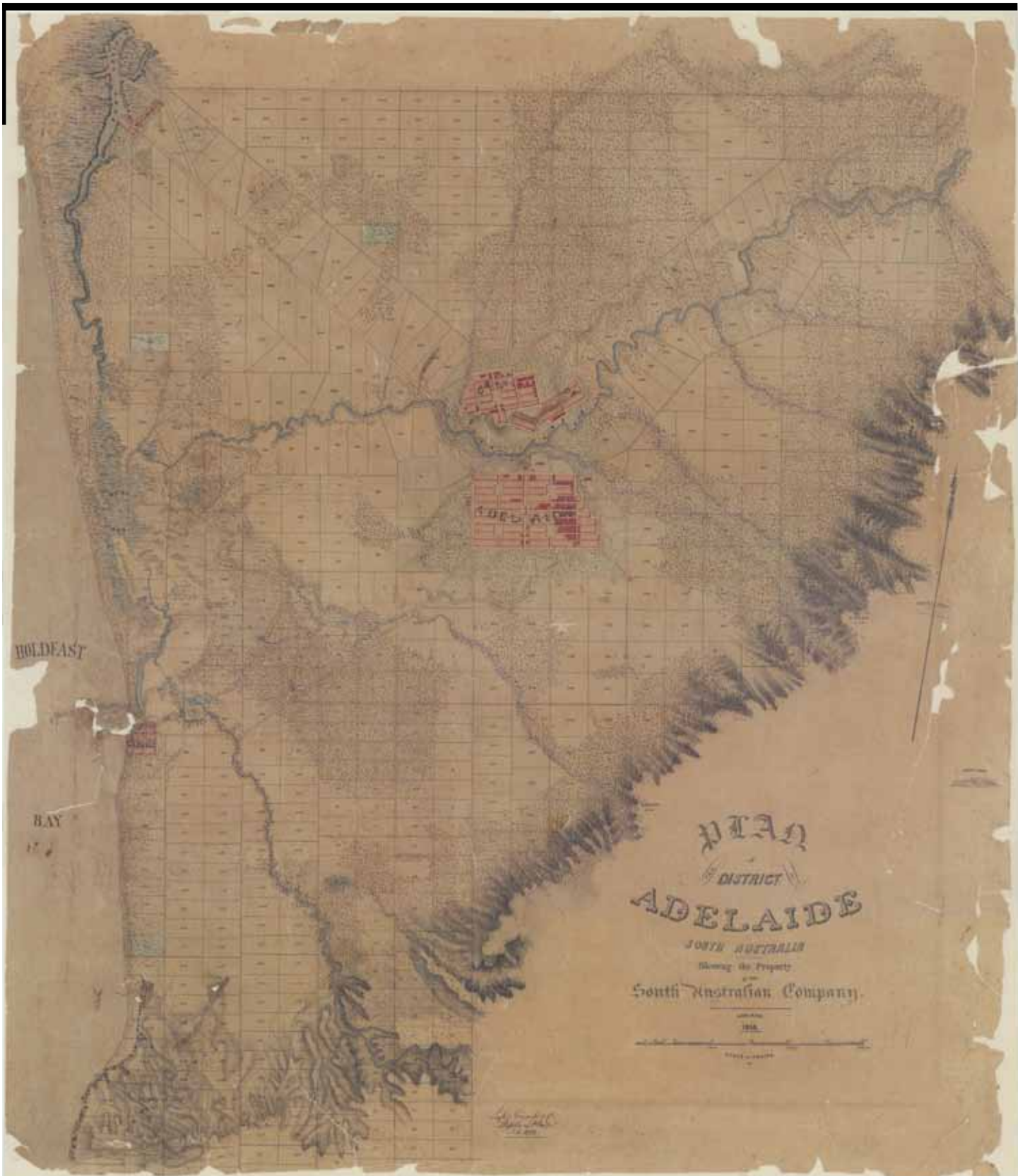
AUSTRALASIAN SOLDIERS  
DARDANELLES  
APRIL 25<sup>TH</sup> 1915

*Above and left: 1915 Wattle Day Dardanelles Monument, Lundie Garden, South Terrace, Adelaide Park Lands. Below: Remnant native vegetation / natural heritage of the original site of the Dardanelles Monument and Gallipoli Memorial Wattle Grove, Spear grass, Wallaby grass, Native sorrel, and trapdoor spider lid. Photos taken by K Henderson, May 2013.*



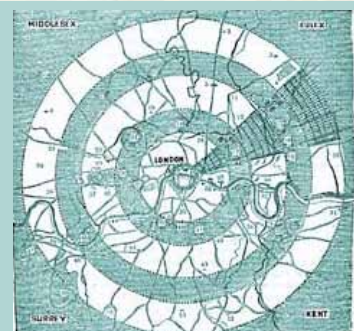
*Top right: Women from the Soldiers' Mothers' Association assembled at the Wattle Grove in the Adelaide Park Lands for an Anzac Day service. Some are wearing the lapel ribbon given to the families of soldiers who died during WWI. The man standing with them is Mr. Makin MHR. The monument in the middle ... has the inscription: 'Australasian Soldiers: Dardanelles April 25th 1915'. State Library of SA, SRG 168/1/58/46. Courtesy of the Liberal Party Collection, photographer J McKenzie, circa 1927.*





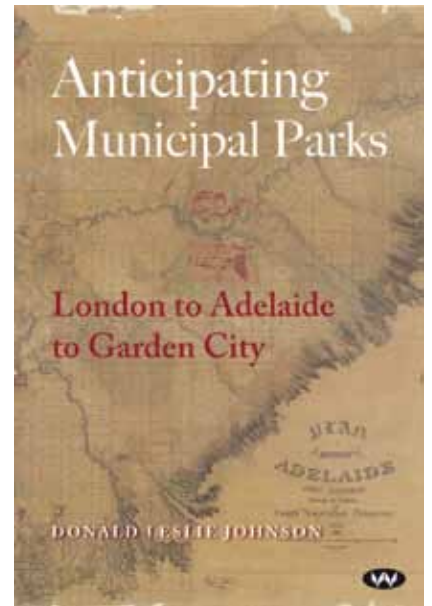
Above: Plan of the District of Adelaide showing the property of the South Australian Company, Adelaide, 1838, Light, Finnis & Co, Stephens Place, Oct 1838; State Library of South Australia, MLSA BRG 42/120/17.

Left: Plan of the intended town of Australind on Leschenault Inlet, Western Australia as finally arranged by M. Waller Clifton Esq ... etc National Library of Australia, <http://nla.gov.au/nla.map-t291>.



Right: Proposal for concentric belts of country for London. In Hints for Breathing Places for the Metropolis, J.C. Loudon, 1829 (colour added) reprinted from 'True Verdict' Park Lands News March 2009 p7, and William Light's Adelaide: The genius of place and plan 16th General Assembly and Scientific Symposium, ICOMOS, 2008.

# Review: *Anticipating Municipal Parks: London to Adelaide to Garden City*



Those familiar with *The Adelaide Plan: Fiction and Fact* (Donald Leslie Johnson / Donald Langmead, Wakefield Press, 1986)—dubbed ‘Fallacy and Fantasy’ by the late Professor Rolf Jensen<sup>1</sup>—will recognise *Anticipating Municipal Parks: London to Adelaide to Garden City* (Donald Leslie Johnson, Wakefield Press, 2012) as a reinvention of the anti-reality ‘theory’ that Adelaide and its Park Lands should be credited to George Strickland Kingston, rather than Surveyor-General William Light. This publication was launched by Dr Susan Marsden,<sup>2</sup> President of the History Council of South Australia, on 27 August 2013 at UniSA’s City West campus.

Self-contradictory, riddled with unsupported and unjustifiable statements this attempted usurpation of Light fails to impress, unlike other Wakefield Press productions such as Lance Campbell and Mick Bradley’s *City Streets: Adelaide 75 years on* (in association with Adelaide City Council, 2012) and South Australian Historian of the Year Patricia Sumerling’s *The Adelaide Park Lands: A social history*.

[www.wakefieldpress.com.au/files/extracts/Anticipating\\_Municipal\\_Parks\\_extract.pdf](http://www.wakefieldpress.com.au/files/extracts/Anticipating_Municipal_Parks_extract.pdf)

As ‘preposterous assumptions’ are regurgitated without remedying basic errors of fact, Professor Jensen’s review of *The Adelaide Plan: Fiction and Fact* (referred to by the author as a colleague’s ‘light-hearted and unbiased’ critique)<sup>3</sup> is equally applicable to *Anticipating Municipal Parks*:

*‘It is a publication full of quite preposterous assumptions masquerading as fact or logical argument’, ‘unproven and unsupported conclusions, ‘coloured heavily ... by a determined character assassination of Light’ ‘in what has all the appearance of a preconceived campaign to discredit Colonel Light’ and ‘overt attempts to bolster Kingston’s image’...*

*... staggering myopia and/or unwillingness to consider the evidence which did not fit in with preconceived theories [and] the only possible source for some of the more outrageous unsupported assumptions [appears to be] long periods communing with the ghost of George Kingston ... the authors have clutched at any straw which could be conjured up, and too often have controverted concrete evidence.’<sup>4</sup>*

According to *Anticipating Municipal Parks*:

*This research became necessary because relevant factual evidence about events before and in 1835, 1836 and 1837 had not been readily accepted by lazy minds content with myth, and because the park lands have been always under threat by the ignorant, vane (sic) and facile for political and commercial expediency.’<sup>5</sup>*

Whilst the political and commercial threats to the Park Lands are self-evident, the author’s accusation against

South Australian researchers is simply untrue. The record clearly shows Light was an accomplished artist; a linguist; musician, and mechanist, intelligent, articulate, a liberal thinker, well-educated, widely travelled, honourable, sensitive, highly esteemed, and most crucially for Adelaide ... a topographical genius. Far from idly dismissing the Kingston / Cataneo ‘plan’, research effort elicits not a scrap of confirmation. Not ‘lazy minds’, but research and fact, disavow and debunk the Kingston myth and character assassinations of Light.

By observation, park belts were not a new idea (see p 10) and other Wakefieldian towns were planned with central rivers (Australind, Western Australia, see p 10, and Christchurch New Zealand) however the extent of river valley reserved by Light forming his unique figure-eight of Park Lands is distinctive, and reflects his long experience of recognising land liable to be subject to inundation. Experience Kingston lacked.

This publication expands the ‘theory’ to span the Georgian reign and mention JA Roebuck, TJ Maslen, and JC Loudon, *et al*. The scope for errors is similarly extended, providing a superficial amalgamation similarly riddled with unfactual statements. The denigration of Light plumbs new depths with the unsubstantiated assertion that Light’s sketches on his ‘Survey of the East Coast of Gulf St Vincent’ were not his, but were ‘probably’ by Henry Nixon. How Nixon achieved this feat requires explanation (or teleportation!) since Light signed the chart at Rapid Valley in November **1836**, and Nixon did not arrive in Adelaide on the *Navarino* until December **1837**.

Above: Cover page of *Anticipating Municipal Parks: London to Adelaide to Garden City* (Wakefield Press, 2012), published with grants from UniSA Special Researchers and School of Art, Architecture and Design funds and SA History Fund; launched by Dr Susan Marsden, President of the History Council of SA on 27 August 2013 at the Civic Gallery, Hawke Building, UniSA (City West campus). Review copy and cover image courtesy of Wakefield Press, 2013.

Marred with a myriad of errors and inaccuracies—enough to fill a book of their own and far too many to list in this short review!—the book is unlikely to fool those who understand South Australia’s actual history. Unfortunately, the unwary, ignorant or gullible may be misled into thinking Kingston an unsung hero, or underdog, thanks to the blinkered view presented of Kingston. His

**Continued on p 12**

1. Former Adelaide University Professor of Architecture and Town Planning and faculty Dean Rolf Jensen, ‘Light’s Vision’, *Planner* (Sydney) 1987 vol 3 no.2, pp 30-34; <http://www.adelaide.edu.au/library/special/mss/jensen>.
2. Dr Susan Marsden is a 2012 *Heritage Heroes Award* recipient; on the SA Heritage Council Register sub-committee, and is a widely published professional historian whose books include *Heritage of the City of Adelaide* (<http://www.sahistorians.org.au/175/documents/author/marsden/index.shtml>).
3. DL Johnson, *Anticipating Municipal Parks* (Wakefield Press, 2012) p 233.
4. Jensen, 1987.
5. Johnson (2012) Preface, x.
6. Mildred Kooringa Election, *South Australian Register*, 7 July 1851, p4.
7. *Anticipating Municipal Parks*, Acknowledgements.
8. ‘Plan of the District of Adelaide showing the property of the South Australian Company, Adelaide, 1838’ p 7.

## **Anticipating Municipal Parks, quoting Voltaire.**

*It is dangerous to be right in matters on which the established authorities are wrong.*

## **François-Marie Arouet (Voltaire):**

*Un bon mot ne prouve rien.  
(A witty saying proves nothing.)*

Extract from review of *The Adelaide Plan: Fiction and Fact* (Wakefield Press) by Rolf Jensen, 'Light's Vision' *Planner* (Sydney, 1987) Vol. 3 no.2, p 34

### Conclusion

*Having combed diligently and expectantly through ... this turgid publication, with mounting impatience, it became clear that we should not find substance or confirmation in what are paraded as newly discovered facts.*

*There is, on the contrary, a complete failure to demonstrate that new salient facts have been uncovered: so that one is driven to the conclusion that this is part of the current wholly undesirable academic journalistic industry of 'publish and be damned'.*

*It certainly appears to be taking advantage of academic resources and privileges—posed as 'academic freedom' or 'legitimate research', and entirely fails to satisfy the imperative research criterion of 'advancing the frontiers of knowledge' ... a very poor investment.*

### Continued from p 11

contemporaries, with lengthy and close personal experience of him, described him as a 'petty tyrant', 'liar', 'vaporising, empty-headed, hollow-hearted treacherous fellow' and 'an ignorant substitute for a surveyor'.<sup>6</sup>

Despite grants from the University of South Australia (Special Researchers and discretionary School of Art, Architecture and Design funds) and SA History Fund (\$2,000, 2008-09 round, History SA),<sup>7</sup> and access to research resources and reliable primary and secondary sources, *Anticipating Municipal Parks* seems content to produce new errors, as well as peddling many old ones. Due to poor research, or poor referencing that lacks acknowledgment of others' work, readers may also remain uninformed of prior publication of some of its claims by other authors.

For example, that Adelaide's Park Lands are the first of their type, or on Roebuck, Maslen and Loudon, is not new information. Identified by Kath Crilly over a decade ago, these were included in her National Heritage List (NHL) nomination of Light's Plan and Park Lands, lodged in 2004 and published on the internet by the Australian government. To the author's credit he noticed errors in the NHL entry but hasn't made it clear errors of fact were submitted by Adelaide City Council in 2005 after government invited the Corporation to comment on Crilly's nomination. Errors, attributable to government and Adelaide City Council, are not those of the original nominator, and were insultingly merged into Crilly's intellectual property without consent.

## Origins of Anticipating Municipal Parks

The late Donald Langmead (1939-2011), a relative of GS Kingston, completed his doctoral dissertation 'George Strickland Kingston: Pioneer and Architect' in 1983; having graduated with an Associate Diploma of Architecture from the SA Institute of Technology (SAIT, now UniSA) in 1966; a Graduate Diploma in Town Planning in 1972; a registered architect 1966-1997; lecturing in architecture, he retired in 2002.<sup>1</sup>

Langmead's supervisor, Donald Leslie Johnson (Flinders University of SA), encouraged him to pursue a theory that Kingston planned Adelaide in London.

Born in Bremerton, Washington State, USA, Johnson graduated in Architecture from the University of Washington; worked for various USA architectural firms while also lecturing, before accepting a position at Flinders University in 1972 and teaching architectural history until retiring in 1988; published on architectural topics including Frank Lloyd Wright and Walter Burley Griffin; collaborated with Donald Langmead on *The Adelaide City Plan: Fiction and Fact*; founded and directed the Australian studies program at Flinders University; collected an archive of architectural material donated to SAIT (UniSA) in 1990, and he became the Architecture Archives' inaugural director, and from 1995 a UniSA Adjunct Professor.<sup>2</sup>

According to Langmead the Kingston theory was based on Building sub-committee minutes (1835) recording surveyors Finnis and O'Brien as having designed two plans of a Town.<sup>3</sup> Without justification it went against earlier expert assessment of the 1835 reference by KT Borrow and the SA Royal Geographical Society, experts who confirmed in the 1930's that William Light was responsible for Adelaide's final plan, devised by Light on the Adelaide site in January 1837. To Kingston's credit he acknowledged Light's plan of Adelaide and its Park Lands, admitted his (Kingston's) inability to survey, and never claimed to have planned the towns 'designed' by Finnis and O'Brien.

Without the innocent victims' consent, absent drawings and evidence, Finnis and O'Brien's designs were dressed up as Kingston's work, and, contrary to his own, and other, denials, from the 1980's he was pushed forward as the planner of the City of Adelaide. Doubly conflicted, the academic architects' theory implicitly sought to supplant town planning surveyors (well-educated and widely travelled, 'pre-eminently qualified' and very experienced at topographical assessments) with an admittedly mediocre 'accidental architect'.

The strained reincarnation of a young blundering Kingston, wrongly credited with intellectual property of Finnis, O'Brien and Light, ignored basic facts and evidence.

1. <http://w3.unisa.edu.au/artarchitecturedesign/architecturemuseum/docs/catalogue/langmeadresearch2010.pdf>.
2. <http://w3.unisa.edu.au/artarchitecturedesign/architecturemuseum/docs/catalogue/Johnson2010.pdf>.
3. *Accidental Architect: Life and Times of George Strickland Kingston* (Crossing Press, 1994).

*Anticipating Municipal Parks*' unfounded claims date back to at least the early 1980's. Since that time there has been no progress with producing evidence, and ongoing failure to address the abundance of material confirming Kingston had no substantive nor determinative role in the City's Plan nor in surveying Adelaide and its Park Lands. Given its academic origins and several expert rebuttals, it is reasonable to expect the Kingston / Cataneo theory should have been swiftly strangled, not fostered. Although the author clearly views Adelaide's Park Lands as unique and deserving protection from government abuses, this admirable stance fails to redeem many fact-finding failures. For instance, contrary to the author's assertions, the Commissioners directed that Light's decision-making autonomy extend long past selection of Adelaide's site, through to completion of the survey of the Preliminary Country Sections.

Usurping Light with a bungler-turned-politician, contrary to evidence and against reason, undermines a potential

World Heritage nomination.

Poorly researched and lacking colour plates, the tissue-covered plan depicted on the cover is not reproduced with its true colours. Sadly dulled, but clearly signed in October 1838 by William Light (not Henry Nixon) for Light, Finnis & Co, this rare watercolour 'Plan of the District of Adelaide showing the property of the South Australian Company'<sup>8</sup> has its own tragic tale to tell of ignorance.

Those who wish to take the book at face value will no doubt be lulled by the mere presence of references into thinking it researched; informed readers will be hard pressed to make sense of it. Ultimately, we arrived at the same conclusion as Professor Jensen. Having diligently combed, I found neither substance nor the exculpatory caveat:

*... characters appearing in this work are fictitious. Any resemblance to actual persons, living or dead, is purely coincidental.*

Kelly Henderson

## Beginning to set the record straight ... brief extracts from a long list

### Mangled monarchs

Prefacing a rehash of the Kingston theory with the Georgian period, George IV's regency and monarchy are blithely annihilated and William IV elevated to the throne in 1811, rather than 1830. Having mangled the history of England's monarchs, Regent's Park's unexceptional naming is categorised as illogical.<sup>1</sup>

### Taking Light's intellectual property

Robbing William Light of credit for his *Survey of the East Coast of Gulf St Vincent, Rapid Valley, 3rd Nov 1836*, and his watercolour sketch map of Adelaide's site (c. Feb 1837), Henry Nixon—who didn't claim to have created these works, not arrived in South Australia until December 1837, with no watercolours credited to him—is proposed to supplant Light as watercolourist of works signed by Light, and annotated with Light's handwritten notes.

### Sworn testimony

Adelaide, and the subdivision of Light's own Country Section at Thebarton, are constructed from the basic unit of the square one-acre. Kingston was proven to be wholly incapable of understanding, or of surveying, this area. Incompetent at measuring a single such figure, Kingston's survey work proved so worthless Light had to discard it entirely. The work was redone (not by Kingston), delaying selection of Town Acres by 14 days. Contrary to Kingston's sworn testimony, the survey of Adelaide, that Kingston had failed to perform, was not his work but the work of others.

### An eminently just man's judgment

The author disputes the survey department's mass resignation, claiming that only three resigned and the rest served under Kingston.

**Fact:** Eleven notified they'd resign rather than serve under Kingston; three remained: McLaren, newly arrived; FR Nixon (who subsequently resigned) and R Symonds who later asserted Kingston was unfit to assess his work. On 7 July 1838, names of **eleven** intending to resign, refusing to work under Kingston and citing 'Mr. Kingston's unbecoming and ungentlemanly behaviour' and his apparently having 'maliciously attributed to party feeling', were published in *Southern Australian*:

B. T. Finnis,	A. F. Lindsay,
G. O. Ormsby,	W. Pullen,
J. Cannan,	B. Pratt Winter
A. Hardy,	H. Nixon,
W. Jacob,	G. R. Thomas,
J. Woodforde,	Surgeon Survey

If Kingston should be best judged by his fellow countrymen, CE Owen Smythe CMG ISO, an Irishman and freemason, enjoying the hearty co-operation and

respect of his staff as Superintendent of the Public Buildings, 'an eminently just man', 'ready to champion the cause of his subordinates as his own' stated:

*Kingston, who was Light's second in command, proving an absolute failure as a surveyor; further, the staff of surveyors (Light's) refused to work under him (Kingston) ... Kingston was never head of the Works and Buildings Department; neither was he ever Surveyor-General ... [and was] ... gazetted as Government Civil Engineer, June 14, 1839; no salary, commission only, on works supervised.<sup>2</sup>*

### 'Rising like Banquo's ghost' at the Port

The author makes a throw away statement of Kingston being involved in construction of Port Adelaide, but is reticent with details.

**Facts:** The South Australian Company preferred William Prescott's advice on the ballasting of the Port Road, declined to employ the expensive Kingston and had Prescott complete the work. Kingston's poor supervision of contractors, evident in the building of the government's wharf and Government House, resulted in Surveyor-General Frome, Royal Engineer, recommending Kingston not be paid, and years later, wharf piles sawn off instead of being driven into the riverbed, confirmed supervisory incompetence.

*Lieut. E. C. Frome, R.E., the new Surveyor General and Colonial Engineer, a man of undoubted ability, thought so little of Kingston's ability as a civil engineer that he recommended that "No commission whatever should be paid to him on account of the harbour works at New Port (Port Adelaide)!"<sup>3</sup>*

*The expense incurred by the Government ... [had been] ... all but rendered useless by the slovenly way in which they were executed, to say nothing of the actual dishonesty of sawing off 5 or 6 feet from the piles, instead of driving them into the mud to that additional depth, these "tops" have lately been fished up from the bottom of the harbour, thus rising like Banquo's ghost in judgment ...<sup>4</sup>*

### Kooringa and 'Surveyor-General'

Contrary to wild assertion, Kingston was not 'Surveyor-General' of the SA Mining Association for the survey of Kooringa at the Burra mine. Kooringa was 'laid out by Mr. Thomas Burr, formerly Deputy Surveyor-General, in April, 1848' and later enlarged by resolution, dated 24 January 1860, of the directors of the SA Mining Association.<sup>5</sup> Regarding the Burra Burra Special Survey, by 16 August 1845 the area had been partially surveyed by Mr Jacob and examined by Mr Finke and party.<sup>6</sup> The Colonial Secretary wrote

[South Australia's Surveyor-General E C] *Frome was to be 'on the land on 28/8/45' [and] the Governor had accepted the tender of Bagot, Ashton, Allen and Stocks ...<sup>7</sup>*

The *Mail* also reported '[a] little trick was tried on by G. S. Kingston' who proposed an oblique block when conditions specified a compact parallelogram.

On the hustings for the Kooringa (Burra Burra) election, Henry Mildred 'convicted [Kingston] of three deliberate falsehoods, stamped him as a liar, and asserted Kingston's actions proved him

*... to continue to be a vapourising, empty-headed, hollow-hearted, treacherous fellow, whose ravings are only equalled by his imbecility and petty tyranny, characteristics for which he has been notorious from his first transformation from a poverty-stricken hanger-on at the bootscraper of the Adelphi, to an ignorant substitute for a surveyor.<sup>8</sup>*

Kelly Henderson

1. *Anticipating Municipal Parks* Chapter 1.
2. *The Register*, 24 October 1924 p11.
3. C Owen Smythe CMG ISO, *The Register*, 6 November 1924 p10.
4. Francis Dutton, quoted in George Sutherland, *The South Australian Company*, p141.
5. Nomenclature / Burr, *The Register*, 20 June 1908 p10.
6. *Burra Record*, 14 June 1933 p4.
7. Burra Mine, *The Mail*, 31 Oct 1925 p14.
8. Mildred Kooringa Election, *South Australian Register*, 7 July 1851, p4.

### Geoffrey Manning, in response to Chris Bowe's 'Light Myth' article in Adelaide Review, July 2004, and extract from 'A Controversy Surrounding Colonel Light'

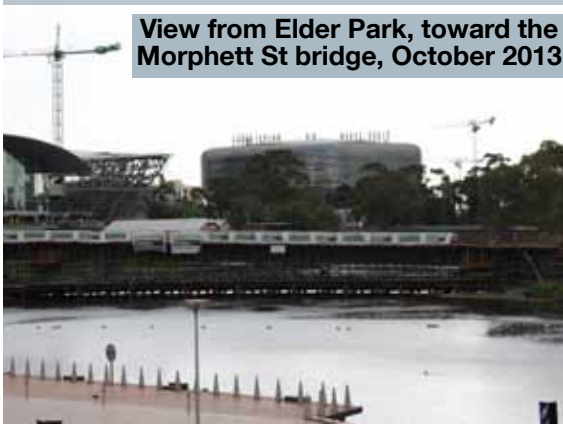
*... an abundance of primary source evidence, apparently unseen by the denigrators of Colonel Light's participation in the foundation of Adelaide, is awaiting interested parties and, in this respect, I direct them to my Data Base of South Australian History held by the State Library of South Australia ... Finally, my 'version' of the life and times of the much-maligned Colonel Light is to be found in A Colonial Experience (Gillingham Printers, 2001) at pp. 51-67 ...*

*I realised ... that what I said was, perhaps, too lengthy for [the Adelaide Review's] columns, although Chris Bowe was happy enough to expound his allegations over two pages ... I do hope he passes on my comments to the learned denigrators of Colonel Light and that they may take the trouble to peruse certain primary source evidence apparently unseen by the 'assassin(s)'.*

# Signs of the times



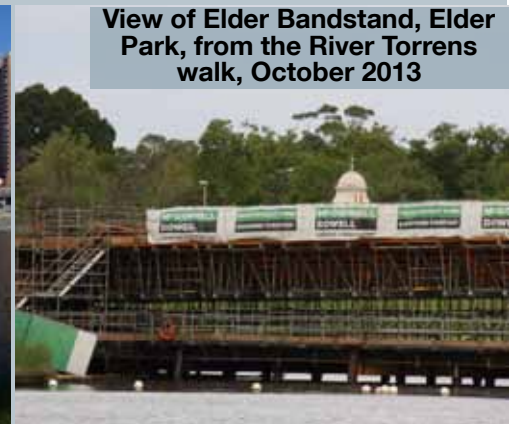
Aboriginal and Torres Strait Islander War Memorial dedicated by the Governor-General 11am on 10 November 2013



View from Elder Park, toward the Morphett St bridge, October 2013



View of Elder Bandstand, Elder Park, from the River Torrens walk, October 2013



THE NEW ROYAL ADELAIDE HOSPITAL WILL BE THE LARGEST, MOST TECHNOLOGICALLY ADVANCED HOSPITAL IN SOUTH AUSTRALIA AND ONE OF THE MOST ADVANCED IN AUSTRALIA, EMPLOYING CLOSE TO 6,000 PEOPLE AND ACCOMMODATING 85,000 INPATIENTS PER YEAR.

PROVIDING A COMPREHENSIVE RANGE OF ADVANCED CLINICAL CARE TO PATIENTS, THIS STATE-OF-THE-ART HOSPITAL WILL PROVIDE WORLD-CLASS HEALTH CARE FOR THE PEOPLE OF SOUTH AUSTRALIA.

INTEGRATED INTO THE CITY PARKLANDS, THE NEW ROYAL ADELAIDE HOSPITAL WILL PROVIDE A POSITIVE HEALING ENVIRONMENT FOR PATIENTS AND THEIR FAMILIES AND OFFER AN EFFICIENT, ENJOYABLE PLACE TO WORK FOR ITS CLINICIANS AND OTHER EMPLOYEES.

**CONSTRUCTION FACTS**

- 8 TOWER CRANES
- 300,000M<sup>3</sup> OF CONCRETE
- 25,000 TONNES OF STRUCTURAL STEEL
- OVER 11,000 FACADE PANELS
- 25,000 TONNES OF REINFORCING
- 40KM OF PARTITIONING

WATCH THE CONSTRUCTION LIVE ON OUR WEBCAM  
WANT TO KNOW MORE? VISIT OUR WEBSITE [www.sahp.com.au](http://www.sahp.com.au)

EMERGENCY DEPARTMENT

- HOSPITAL FACILITY 175,000M<sup>2</sup> CAR PARK 76,000M<sup>2</sup>
- 100% SINGLE IN PATIENT ROOMS WITH OPENING WINDOWS, NATURAL LIGHT AND READY ACCESS TO OUTDOOR AREAS AND GREEN SPACE
- 40 TECHNICAL SUITES (OPERATING THEATRES)
- ADVANCED IT SYSTEMS TO IMPROVE PATIENT SAFETY AND PROVIDE IMPROVED CLINICAL AND PATIENT INFORMATION
- A FLEET OF AUTOMATED VEHICLES TO HELP MOVE EQUIPMENT AND SUPPLIES AROUND THE HOSPITAL
- CARPARKING FOR APPROX 2,300 CARS
- A COMMERCIAL PRECINCT INCLUDING A CHILDCARE CENTRE, MINIMART, CAFES AND GYMNASIUM
- AN EMERGENCY DEPARTMENT CAPABLE OF TREATING 25% MORE PATIENTS EACH YEAR THAN THE EXISTING RAH.
- DEDICATED UNDERCOVER BIKE STORAGE FACILITIES FOR 300 BIKES INCLUDING SHOWERS AND LOCKERS

WATCH THE CONSTRUCTION LIVE ON OUR WEBCAM  
WANT TO KNOW MORE? VISIT OUR WEBSITE [www.sahp.com.au](http://www.sahp.com.au)

COMMERCIAL PRECINCT

# NEW MEMBERSHIP APPLICATION FORM

**Adelaide Park Lands Preservation Assoc Inc PO Box 7334 Hutt Street SA 5000**

Name .....

Address .....

Telephone ..... E-mail ..... Date .....

- \$25 single (full rate)
- \$30 family (full rate)
- \$35 corporate
- \$15 single (concession)
- \$25 family (concession)
- Send *Park Lands News* via e-mail
- Donation \$.....

**Method of payment**

- Cheque / Money order attached
- Electronic Funds Transfer
- Charge my VISA / BANKCARD

**OBJECTIVES OF THE ASSOCIATION ARE TO ENSURE THAT:**

- the Park Lands are available for use by the general public
- the public, so far as practicable, has free and unrestricted access to the Park Lands
- the Park Lands are reserved as a place for public recreation, leisure and enjoyment
- alienated areas of the Park Lands are restored for recreational use, preferably as open space
- the open space character of the Park Lands as a place dividing the City of Adelaide from the suburbs is preserved
- the Park Lands are preserved and maintained in a manner that enhances their special place in the design of the City of Adelaide
- the amenity of the Park Lands is not impaired by inappropriate development of nearby lands
- the Park Lands are included on State, National and World Heritage lists.

I agree to be bound by the Constitution of the Association. Signature .....

Send to: Adelaide Park Lands Preservation Assoc Inc, PO Box 7334 Hutt Street SA 5000

Please make cheque/money order payable to: Adelaide Park Lands Preservation Association Inc (*not 'APPA'*)

*Electronic Funds Transfer to ANZ Banking Group BSB: 015-310 Acc No: 4063-53172* (Please ensure the bank captures your name when you do the EFT)

VISA / BANKCARD No.  Expires ...../.....

Cardholder's name ..... Signature ..... 10/13

**Committee 2012–2013**

**President:** Ian Gilfillan

**Secretary:** Shane Sody (*pro tem*)

**Treasurer:** Luciana Larkin

**Committee members:**

- Jonathan Harry
- Kelly Henderson
- Ian Hordacre
- Damian Mugavin
- Hamish Ramsay
- Michael Sando
- Shane Sody

**Auditor** David Carver, BK Partners

**Editor/Web administrator**  
Kelly Henderson

**DISCLAIMER**

The information in this publication is presented in good faith to members of APPA Inc. While the information is believed to be correct, APPA Inc takes no responsibility for its accuracy. No liability is accepted for any statements of opinion or any error or omission. Although advertising material is accepted for this newsletter, such acceptance does not imply endorsement by APPA Inc.

**Back Cover Photo Key**

**SAHMRI**

**North Tce Park Lands**

**Adelaide Stadium x 2**  
**War Memorial Drive**

<b>Trick or Treat?</b>	<b>Park Lands Hospital</b>
	<b>Rail line electrification</b>
	<b>Adelaide High School expansion</b>

**Contact**

**Ian Gilfillan (President)**  
Telephone: (08) 8333 0534  
Mobile: 0429 0429 50

**Shane Sody (Secretary *pro tem*)**  
Mobile: 0414 959 125

**News, comments, articles and Web site suggestions:**

The Editor  
c/- PO Box 7334  
Hutt Street SA 5000  
Mobile: 0432 989 676  
E-mail: appa.editor@gmail.com

**Next newsletter copy deadline:**  
15 November 2013

**Membership:**  
Membership of the Association is open to all who support the objectives of the Association. Members receive the *Park Lands News* four times a year.

