

17. UAV (unmanned aerial vehicle) area

Drones are welcome here, including weekend drone racing through an obstacle course.

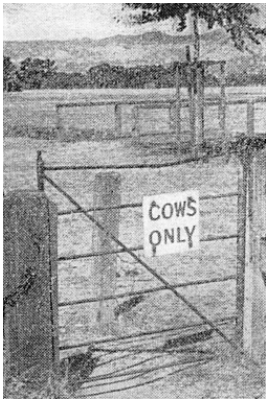
18. Walyu Yarta Community garden

Opened 2009, maintained by local volunteers, the first community garden in Adelaide.



19. Re-vegetation area

Within three decades of the first European settlement, all trees had been removed from the Park Lands. Re-vegetation started in the 1880's. In recent years the City Council has encouraged this native woodland to flourish, without irrigation.



20. Cows

Up until the 1960s, some families in the southern part of the City would keep a cow on these paddocks. Cricketers would have to beware of fresh cow pats on the outfield.

21. Southern sports facilities

Three soccer pitches licensed to the Football Federation of South Australia. Next to Greenhill Road, there are fenced tennis courts, and a larger bitumen area marked out for tennis or netball.

WHO ARE WE?

The Adelaide Park Lands Association is a community-based, non-profit organisation.

We help you **explore** with Guided Walks, and **inspire** you with art and images, as we **protect**, and **restore** Adelaide's unique, National Heritage-listed irreplaceable garland of Park Lands.

Please join us, as a member, to support our work, and enjoy free participation in our regular Guided Walks.

www.adelaide-parklands.asn.au

Scan this QR code for the full Trail Guide on our website



22. Kurna associations

Kurna people lived on the Adelaide plains, amongst open woodland, for tens of thousands of years.

There are no written records of Kurna sites specifically in this Park, but oral evidence suggests that the South Park Lands area generally was regularly used for camping, food harvesting, burial and hunting in the time before European settlement. This ended in the 1860s, when the Kurna were driven out and their camps burnt.

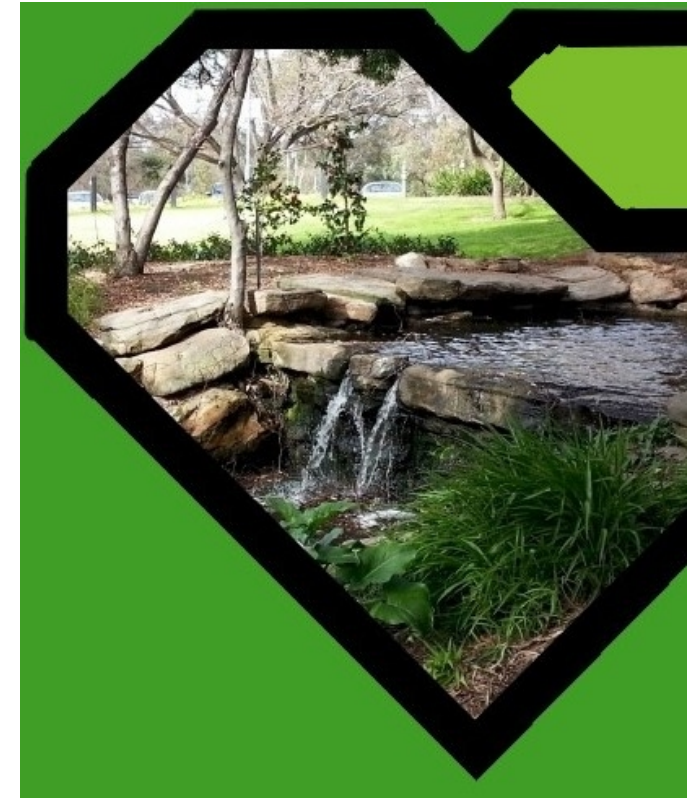


Adelaide Park Lands Association

EXPLORE

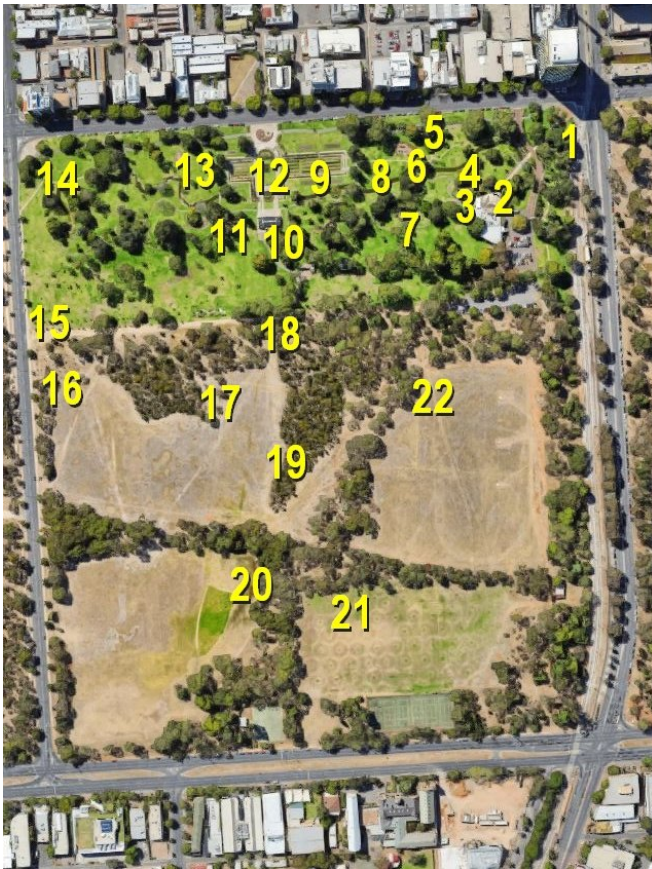
Veale Park / Walyu Yarta (Park 21)

Scan the QR code on the back of this leaflet for the full Trail Guide



1. Naming.

Named after former Town Clerk William Veale. Veale Gardens is just the northern one-third of the Park. The Kaurna name means the location of the edible "Walyu" root.



2. "The Pavilion"



Est. 1963 as the "Alpine Restaurant"

3. Creeks and grottoes

An artificial creek, and six different grottoes, some with features including a fountain and waterfall.

4. "The Couple" (1962)

by Dutch sculptor by Berend van der Struik. The faces have disappeared as the sandstone has weathered.



5. River Red Gums

Planted In the 1920's and 30's, long before Veale Gardens was established.

6. Mabuhay Pergola (1978)

made of Philippines mahogany. The wisteria blooms in spring.

7. Shallow pool of death

Peter Dansie was sentenced to 25-years jail for drowning his wheelchair-bound wife Helen in this pool in 2017

8. Sundial (1964)

A reproduction, donated by the Symonds family. Greek text reads: "The Night Cometh".

9. Sunken rose garden

Established 1963. A venue for weddings since the 1970's

10. Site of former conservatory



Erected in the 1960s. Demolished in 2016.

11. Mounds behind the grottoes (1962)

The hills behind the grottoes were built with 70,000 cubic metres of soil carted from concurrent landscaping works in Bonython Park and Rymill Park.



12. "Pan" (1962)

by John Dowie. In a pond that features Nelumbo lotus flowers, with a pansie bed next to South Tce.



13. Adelaide-Qingdao rose garden

Opened 2017. Qingdao, China, Adelaide's sister city, has a matching statue: "The Song of the Wind".

14. Sir Lewis Cohen Avenue

Built in 1906, it severed what had been, until that time, a wide Park 21, with the western portion then called 21W.

15. Old Access Road

This dirt road was closed to traffic in 2007. For decades it was known as a "gay beat" (a meeting point for homosexual men) who were often attacked here.

16. Rifle butts monument

Huge earthen structures were placed here and used for rifle practice in the 1800's.