

15. Simpson & his donkey & Angas Gardens

Robert Hannaford sculpture of Simpson (2012). The memorial to the Angas family was erected in 1915 on North Terrace but moved here in 1930.

16. Adelaide Bridge (1931)

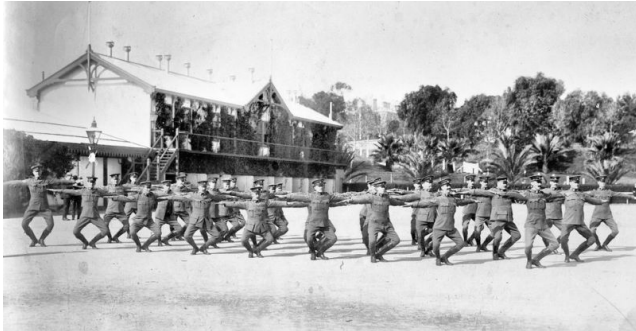
The third bridge on this site. Earlier ones (1839 and 1877) proved inadequate for the growing city.

17. Rose garden; 18. Pioneer Women's Memorial Garden

The 1941 statue by Olga Cohn, represents "the spirit of womanhood capable of giving birth to a nation". The site is used annually for Writers Week in the Adelaide Festival.

19. Torrens Parade Ground & former drill hall

Now used by History SA, and for car parking.



Parade ground, 1912; a 21st century opportunity for re-greening?

20. Current & former boat houses

All four established 1918 or earlier. Two rebuilt after fires in 1936 and 1962. Two still used for boating.



21. Water Police station (1928)

The officer in charge up to 1956 was called "Inspector of Boats and Keeper of Swans".

22. Vietnamese boat people memorial (2021)

The creation of local sculptor Tim Thomson, honouring hundreds of thousands who died at sea in rickety boats, fleeing Vietnam in the 1970s.



Adelaide Park Lands Association

Explore

Red Gum Park / Karrawirra (Park 12)

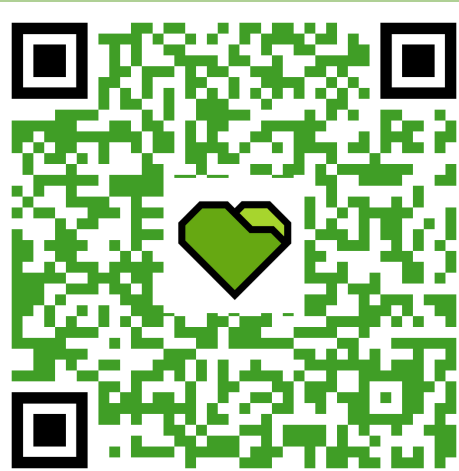
Scan the QR code on the back of this leaflet for the full Trail Guide

WHO ARE WE?

The Adelaide Park Lands Association is a community-based, non-profit organisation.

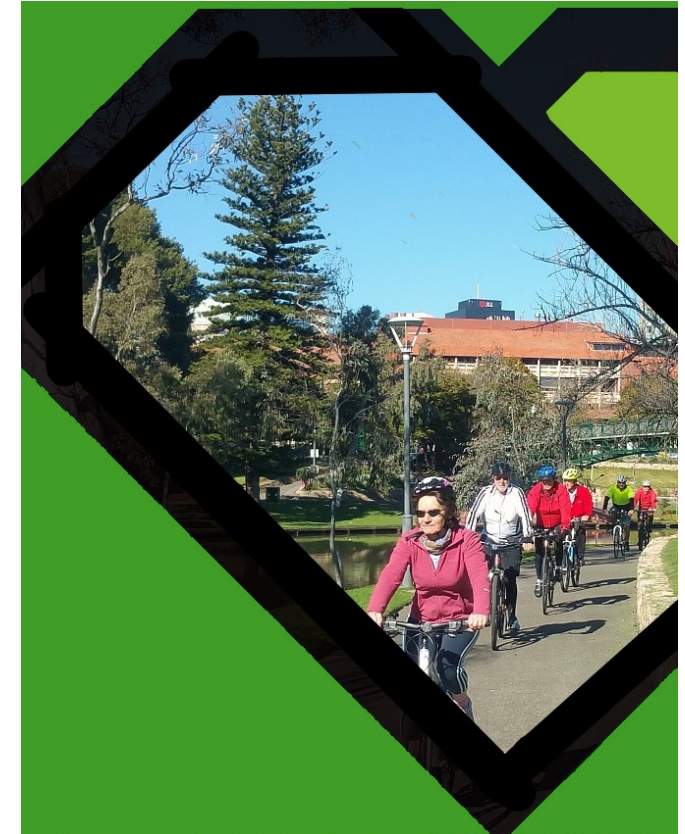
We help you **explore** with Guided Walks, and **inspire** you with art and images, as we **protect**, and **restore** Adelaide's unique, National Heritage-listed irreplaceable garland of Park Lands.

Please join us, as a member, to support our work, and enjoy free participation in our regular Guided Walks



Scan this QR code for the full Trail Guide on our website.

www.adelaide-parklands.asn.au



This Trail Guide traverses traditional lands of the Kaurna people. We acknowledge and pay respect to the past, present and future traditional custodians and elders of this land.

1. Introduction and McEwin arboretum

The Park's name means the same in English and in Kaurna. The "River Red Gum" place. The trees here are the remains of Adelaide's first arboretum, established in the 1920s.



2. University footbridge (1937)

The balanced cantilever footbridge links the Uni with the playing fields across the river.

3. University precinct & Duncan memorial

The entire Uni campus was a gradual erosion of Park 12 from 1875 to the 1940's. The murder of Dr George Duncan here in 1972 prompted gay law reform.

4. Two major public art works

"The Space Between" (2016) commemorating former forced adoption practices; and "Fugue" (1998) by Greg Johns, on loan from the Art Gallery of SA.



Grundy Gardens in the 1930s

5. Grundy Gardens and First Creek outlet.

Designed 1933 and featuring dry stone walling. Named in 1969, three years after the death of Cr Tom Grundy.

6. Albert Bridge (1879)

State heritage-listed. Named for Queen Victoria's husband, it replaced an earlier wooden bridge.



Traffic accident on the Albert Bridge, 1923

7. Park Lands sign

Updated in 2016, after two years of lobbying to remove the University's false claim it could control public entry.

8. Memorial to "forgotten Australians" (2010)

Giant gazania flowers – acknowledgment of children who suffered abuse in institutions. This part of Park 12 was known historically as Roberts Place.

9. Sir Edwin Smith Avenue

Named for a former Mayor of Adelaide and founding patron of Norwood Football Club. See the giant river red gum tree here.

10. "Koala Farm" (1930's) and Peace Park (1986)

Starting in 1927 as a "snake park" the commercial tourist "Koala Farm" lasted until 1960. Decades later this area was named "Peace Park" and now hosts several commemorative features with the theme of 'Peace'.



Noel Coward at the 'Koala Farm' 1930

11. SA Naval Memorial (1995)

An anchor mounted on a granite slab and a separate memorial to a sailor killed accidentally at Glenelg, 1885.

12. Garden of Remembrance (1920s)

A tribute to the women of South Australia and their contributions during the First World War. It includes a giant Cross of Remembrance, erected in early 1920s, aligned with the facade of St Peters Cathedral.

13. Adelaide Uni "Pavilion" (1910)

Made of Carey Gully sandstone, this grandstand was funded by donations soon after the University started licensing the use of these sports fields from 1908.

14. Statue of King George V on a horse

Erected 1950, which was 14 years after his death. He came to Adelaide in 1901, before becoming King.