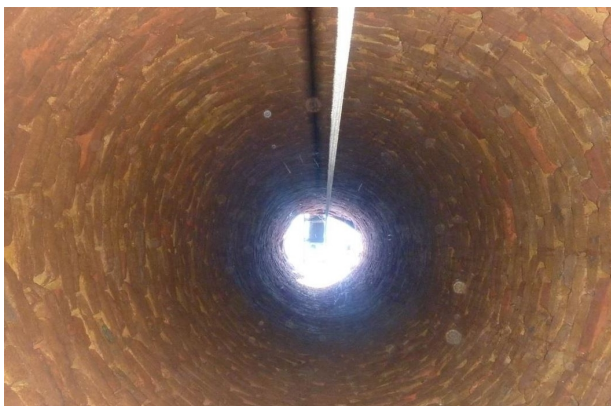


9. Weather observation station

Weather observations were first taken in this Park in 1838, although from 1977 observations were transferred to Kent Town. Meteorological instruments were re-installed here, in 2017.

10. 'Emigration Square' and water well.

In the 1840's, this area hosted many rough wooden huts used by migrants arriving in Adelaide. Under the grass is their surviving 1840's brick-lined water well, 12 metres deep. After being covered up for 150 years, a Council gardener accidentally re-discovered the well in 2010.



Inside the surviving 1840's water well

11. Bakewell underpass

From the 1920's, a Bakewell bridge crossed the railway lines here. The bridge was damaged when hit by a train in 2001 and eventually replaced in 2006 with this underpass.

12. Road re-alignment

The former Mile End Road linked Hindley St with Henley Beach Road. It was replaced, in 1925, with Glover Avenue on this different, diagonal alignment.

13. Adelaide High, site of former Observatory

From 1860, an astronomical Observatory was here, eventually making way in 1951 for the Adelaide High School, which is now State Heritage listed.

14. Mini-forest, site of former weather bureau

A "Weather Bureau" building was on this corner from 1940. When the Bureau moved to Kent Town in 1977, the Education Dept unsuccessfully sought to expand the High School onto this now-revegetated corner of Park 24.



1940-1979 Adelaide "Weather Bureau" in Park 24

WHO ARE WE?

The Adelaide Park Lands Association is a community-based, non-profit organisation.

We help you **explore** with Guided Walks, and **inspire** you with art and images, as we **protect**, and **restore** Adelaide's unique, National Heritage-listed irreplaceable garland of Park Lands.

Please join us, as a member, to support our work, and enjoy free participation in our regular Guided Walks



Scan this QR code for the full trail guide on our website

www.adelaide-parklands.asn.au



Adelaide Park Lands Association

EXPLORE

Ellis Park/ Tampawardli (Park 24)

Scan the QR code on the back of this leaflet for the full trail guide



This Trail Guide traverses traditional lands of the Kaurna people. We acknowledge and pay respect to the past, present and future traditional custodians and elders of this land.

1. Introduction and Park naming

This 35-hectare Park has been known as "Park 24" since at least the 1890's. Its English name honours Val Ellis, City of Adelaide Director of Parks & Recreation 1966-83.

Its Kaurna name means house (or home) on the plain.

3. Signals station

This site, opposite Franklin St, was used for almost 150 years (1841 to 1987) for a flag "signals station", then a telegraph station, stables, garage, depot, and finally a recreation shed for postal and telecommunications workers.

5. Lie of the Land

These dome-like rock structures form a public art installation: "The Lie of the Land" (2004) by Jude Walton and Aleks Danko. Made of Kanmantoo stone, they evoke Kaurna huts that existed in this area before European settlement.



7. Native apricot tree

Several large logs on the ground protect a rare native apricot tree, a remnant of the Adelaide plains' native vegetation.



8. Centre of the Park

Now home to tennis courts, and more re-vegetation. In 1910 this site was sought by the Federal Government for military barracks, but the barracks went to Keswick instead.



2. Sporting facilities

The two-storey building here is for the Adelaide Comets Soccer club and the Western Districts Athletics Club. They received a \$3 million State Government grant, to have this built in 2018, to replace two smaller sheds used separately by each club.

4. Quarry, rubbish dump, works depot

An 1800's rubble quarry here was turned into a rubbish dump, then in the early 1900's converted to a Council works depot, hidden behind a tall, kei apple hedge.