

### 11. Oval No. 2

Used for lower-key cricket games and occasional concerts, and overflow parking. Available to the public when not in use by the Stadium Management Authority.



Oval #2

### 12. Tennis facilities

Tennis SA, Memorial Drive Tennis Club & NextGen fitness centre have decades-long leases over 3.8 ha of this Park.



### 13. Pinky Flat

Named for "pingko" or bilby. Kaurna camp ground, prior to and continuing after European settlement.



Alexander Schramm (1850) painting

### 14. Adelaide Bridge and tiled mural

The current bridge was built 1931. It was the third at the site with earlier ones inadequate for a growing city.



The first City Bridge, opened 1839. Pic: Duryea (1866)

## WHO ARE WE?

The Adelaide Park Lands Association is a community-based, non-profit organisation.

We help you **explore** with Guided Walks, and **inspire** you with art and images, as we **protect**, and **restore** Adelaide's unique, National Heritage-listed irreplaceable garland of Park Lands.

Please join us, as a member, to support our work, and enjoy free participation in our regular Guided Walks



Scan this QR code for the full Trail Guide on our website

[www.adelaide-parklands.asn.au](http://www.adelaide-parklands.asn.au)



# Adelaide Park Lands Association

## EXPLORE

### Tarntanya Wama North (Park 26)

including Stella Bowen Park, Pinky Flat & Light's Vision

Scan the QR code on the back of this leaflet for the full Trail Guide



This Trail Guide traverses traditional lands of the Kaurna people. We acknowledge and pay respect to the past, present and future traditional custodians and elders of this land.



## 1. Introduction and Park naming

Tarntanya Wama means Red Kangaroo (i.e Adelaide) plain.



## 2. Sir Ross Smith statue & War Memorial Oak

Both are State Heritage-listed. A pioneer aviator Ross Smith was the first to fly from England to Australia (1919).



*Statue unveiling, 1927*

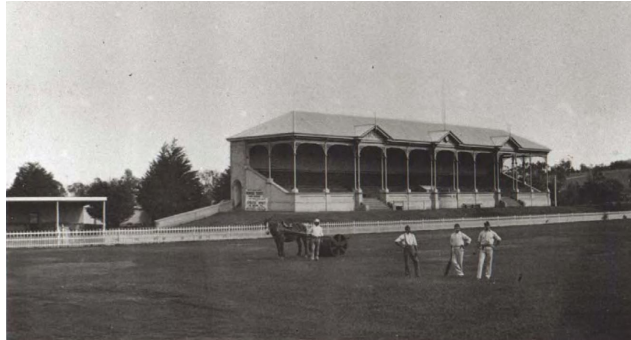
The oak was planted 1914, only days after WW1 outbreak.

## 3. Creswell Garden

Memorial arch erected 1910. The garden named for Jack Creswell (1858-1909) sportsman and sport administrator.

## 4. Adelaide Oval and hotel

First used for sport in 1840. Now controlled by an 8-member Board. Hotel added in 2020 despite City Council objections.



*Adelaide Oval, 1882*

## 5. Pennington Gardens West

Landscaped from 1899 and featuring an 1892 replica of an 1,800 year-old "Hercules"

## 6. North-east pathway

Leading to St Peters Cathedral, the pathway features an elaborate British-made 1887 fountain and a drinking fountain in memory of sportsman Jack Reedman (1865-1924).



## 7. Hedged gardens and plaques

This area of Pennington Gardens West features a sundial and three memorial plaques.

## 8. Moreton Bay fig walk

Separating Pennington Gardens West, from Stella Bowen Park. Trees planted in 1867.



## 9. Magarey grove

Avenue of Oriental Plane trees, established in 1988 at West Lakes Boulevard, moved here in 2017. It includes a plaque for each winner of the annual Magarey Medal.



## 10. Montefiore Hill / Light's vision

The statue was erected in 1906 in Victoria Square – and moved here in 1936 to mark SA's centenary.



*Light's vision, 1936*