

### 11. Oval No. 2

Used for lower-key cricket games, occasional concerts, and overflow parking. Available to the public when not in use by the Stadium Management Authority.



Oval #2

### 12. Tennis facilities

Tennis SA, Memorial Drive Tennis Club & NextGen fitness centre have decades-long leases over 3.8 ha of this Park.



### 13. Pinky Flat

Named for "pingko" or bilby. A Kaurna camp ground, prior to and continuing after European settlement.



Alexander Schramm (1850) painting

### 14. Adelaide Bridge and tiled mural

The current bridge was built 1931. It was the third at the site with earlier ones inadequate for a growing city.



The first City Bridge, opened 1839. Pic: Duryea (1866)



# Adelaide Park Lands Association

## EXPLORE

### Tarntanya Wama North (Park 26)

including Stella Bowen Park, Pinky Flat & Light's Vision

Scan the QR code on the back of this leaflet for the full Trail Guide

### WHO ARE WE?

The Adelaide Park Lands Association is a community-based, non-profit organisation.

We help you **explore** with Guided Walks, and **inspire** you with art and images, as we **protect**, and **restore** Adelaide's unique, National Heritage-listed irreplaceable garland of Park Lands.

Please join us, as a member, to support our work, and enjoy free participation in our regular Guided Walks



Scan this QR code for the full Trail Guide on our website

[www.adelaide-parklands.asn.au](http://www.adelaide-parklands.asn.au)



2.4 km  
Allow 2 hours

This Trail Guide traverses traditional lands of the Kaurna people. We acknowledge and pay respect to the past, present and future traditional custodians and elders of this land.

## 1. Introduction and Park naming

Tarntanya Wama means Red Kangaroo (i.e Adelaide) plain.



## 2. Sir Ross Smith statue & War Memorial Oak

Both are State Heritage-listed. Pioneer aviator Ross Smith was the first to fly from England to Australia (1919).



*Statue unveiling, 1927*

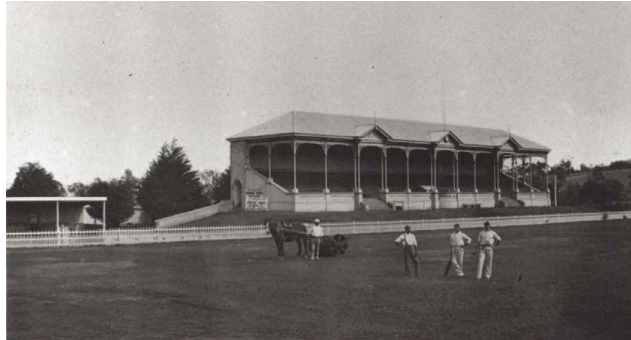
The oak was planted 1914, only days after WW1 outbreak.

## 3. Creswell Garden

Memorial arch erected 1910. Garden named for Jack Creswell (1858-1909) sportsman & sport administrator.

## 4. Adelaide Oval and hotel

First used for sport in 1840. Now controlled by an 8-member Board. A hotel was added in 2020, despite City Council objections.



*Adelaide Oval, 1882*

## 5. Pennington Gardens West

Landscaped from 1899, and featuring an 1892 replica of an 1,800 year-old "Hercules" statue.

## 6. North-east pathway

Leading to St Peters Cathedral, the pathway features an elaborate 1887 fountain and a drinking fountain in memory of sportsman Jack Reedman (1865-1924).



## 7. Hedged gardens and plaques

This area of Pennington Gardens West features a sundial and three memorial plaques.

## 8. Moreton Bay fig walk

Separating Pennington Gardens West, from Stella Bowen Park. Trees planted about 1890.



## 9. Magarey grove

Avenue of Oriental Plane trees, established in 1988 at West Lakes Boulevard, moved here in 2017. It includes a plaque for each winner of the annual Magarey Medal.



## 10. Montefiore Hill / Light's vision

The statue was erected in 1906 in Victoria Square, and moved here in 1938 soon after SA's centenary.



*Light's vision, 1940s*