

12. Irrigation

This pumping station uses water from the river to irrigate some parts of your Park Lands.

13. Trees and wildlife

On the advice of John Ednie Brown, many tree species planted here were exotics: pines, cypress, and fig trees. More recent plantings include blue gums and yellow gums. Local birds include cormorants, ducks and swamphens. Possums and even koalas have been sighted here.

14. Deceased Workers Memorial Forest

Marked by a simple shelter, and coloured spheres to imitate balloons, there is a tree planted here to honour 280 people who died at work from 2003 to 2015, with more recent deaths marked by pavers.



15. West Adelaide Soccer Club

Long associated with the Greek community, West Adelaide juniors play here. Permission is being sought for improved lighting and built facilities.



16. Community "hub"

Basketball and tennis court, sandpit, shelter, and barbecue. This area was developed in 2016.



Adelaide Park Lands Association

EXPLORE

John E. Brown Park (Park 27A) & Mary Lee Park (Park 27B)

Scan the QR code on the back of this leaflet for the full Trail Guide

WHO ARE WE?

The Adelaide Park Lands Association is a community-based, non-profit organisation.

We help you **explore** with Guided Walks, and **inspire** you with art and images, as we **protect**, and **restore** Adelaide's unique, National Heritage-listed irreplaceable garland of Park Lands.

Please join us, as a member, to support our work, and enjoy free participation in our regular Guided Walks



www.adelaide-parklands.asn.au

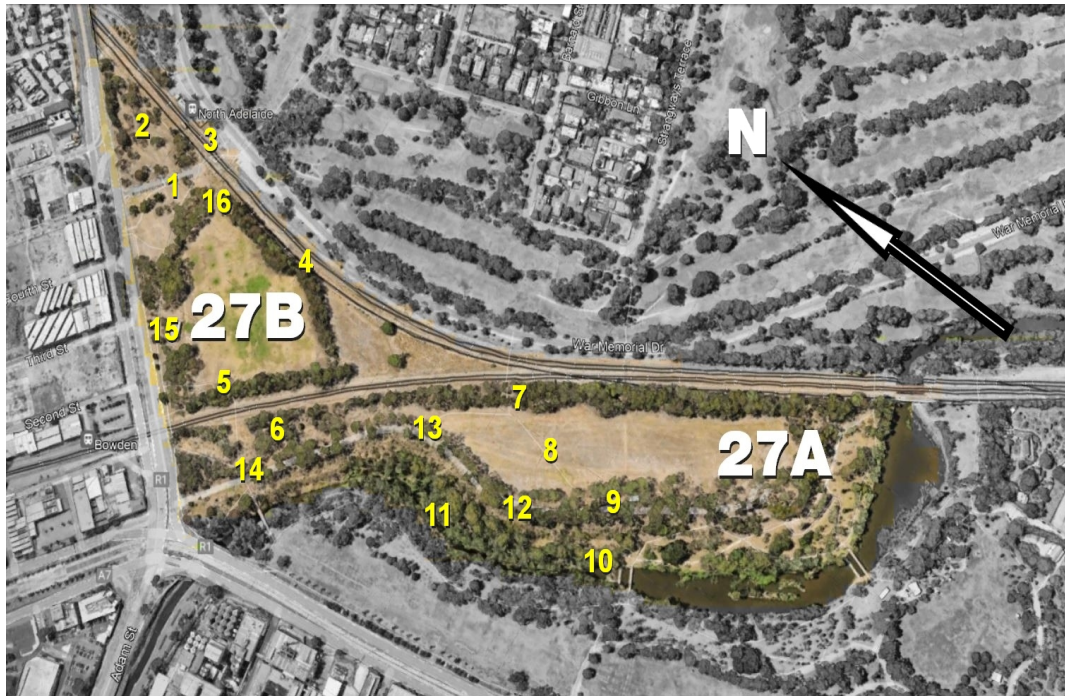
Scan this QR code for the full Trail Guide on our website



This trail guide traverses traditional lands of the Kurna people. We acknowledge and pay respect to the past, present and future traditional custodians and elders of this land.

1. Mary Lee Park (Park 27B)

Mary Lee (1821-1909) was secretary and leader of the Women's Suffrage League of South Australia; who in 1894 succeeded in making South Australia one of the first places in the world with votes for women.



2. Park Terrace Community Garden

Created in 2016, it is a centre of activity for locals. The regular garden drop-in time is most Saturdays. The aim is “to create a place for like minded people to share in the joys of growing fresh produce which can be enjoyed by all garden members.”



3. North Adelaide Railway Station

Opened 1857 – the third oldest railway station in SA.

4. Trees and cows.

Unlike most other parts of your Park Lands early settlers did not clear all native vegetation from this Park. It was also the last part of the Park Lands where cows were kept, up until 1972!

5. Park Lands Trail

Connecting Parks to either side of this Park, the entirety of the Trail is a 19-kilometre figure-8 loop of your Park Lands

6. John E. Brown Park (Park 27A)

West of the rail line, this Park is named for the Scots forestry expert who devised an 1880 plan for revegetating your Park Lands.

7. Torrens Rail Junction project

The \$350m project in 2017-18 lowered the railway to go under Park Terrace. It included a pedestrian crossing, which was later found to be non-disability compliant and so has not ever been opened.

8. Model aircraft, CX bikes

This open area was used by model aircraft enthusiasts from 1955. It is still used occasionally for the sport of cyclocross (CX) bicycle racing, cross-country.



Cyclocross (CX) racing in John E. Brown Park

9. Horses

An old shed here - disused since the mid 2010s - was once known as the 'John Vaughan Equestrian Park Pavilion'. In 2023, the Police Association wanted this site used for Mounted Police barracks.

10. Bunyip Trail

A 500-metre riverside trail, with nine storyboards and suggested activities. Like the book on which it's based, it ends at a secluded billabong. Look for the bunyip!



One of the storyboards on the Bunyip Trail

11. Kurna history and language

These two Parks are the only parts of your Adelaide Park Lands without designated Kurna names, although that is likely to change in 2024.